

Product datasheet for **RC205979**

RanBP16 (XPO7) (NM_015024) Human Tagged ORF Clone

Product data:

| | |
|---------------------------|---|
| Product Type: | Expression Plasmids |
| Product Name: | RanBP16 (XPO7) (NM_015024) Human Tagged ORF Clone |
| Tag: | Myc-DDK |
| Symbol: | RanBP16 |
| Synonyms: | EXP7; RANBP16 |
| Mammalian Cell Selection: | Neomycin |
| Vector: | pCMV6-Entry (PS100001) |
| E. coli Selection: | Kanamycin (25 ug/mL) |
| ORF Nucleotide Sequence: | >RC205979 ORF sequence Red=Cloning site Blue=ORF Green=Tags(s) |

TTTTGTAATACGACTCACTATAGGGCGGCCGGAATTCGTCGACTGGATCCGGTACCGAGGAGATCTGCC
GCC**CGATCGCC**

ATGGCGGATCATGTGCAGAGCCTGGCCAACTAGAGAATCTGTGCAAACAGCTGTATGAAACCACAGACA
CAACCACTCGACTCCAGGCAGAGAAAGCCTTGGTTGAATTTACCAACAGCCCTGATTGCCTGAGCAAGTG
CCAGCTACTCCTCGAAAGAGGAAGTTCTCTTACTCCCAGTTACTGGCAGCTACATGCCTTACCAAGCTT
GTATCACGCACAAACAACCCCTACCATTGGAACAGCGAATAGATATTCGGAATATGTGCTCAACTACC
TTGCCACTCGGCCGAAGTTGGCTACTTTGTGACACAAGCACTTATTCAGTTATATGCCAGAATCACAAA
ACTGGGCTGGTTTACTGTCAGAAAGGATGACTATGTCTTCAGAAATGCAATCACAGACGTCACAAGGTTT
TTACAGGATAGTGTGAATACTGCATCATTGGTGTCACAATTTTATCTCAGCTAACCAATGAAATTAATC
AAGCAGACACCACCCATCCTTTAACCAAGCACAGAAAAATAGCCTCTTCTTTTCGCGATTTCATTATT
TGATATCTTCACACTTCTGCAATTTACTAAAACAGGCTTCAGGAAAGAATCTAAACTTGAATGATGAA
AGTCAGCATGGCTTGCTCATGCAACTGCTCAAGCTCACTATAACTGCCTCAACTTTGACTTCATCGGCA
CTTCCACTGATGAGTCCCTCAGACGACCTGTGTACAGTGCAGATTCACACCAGCTGGAGATCAGCCTTCTT
AGATTCTTCAACCTTGCAGCTGTTTTTTGACCTGTATCATTCCATCCCTCCTTCATTTTACCTCTGGTA
TTATCTGCTTGGTACAGATCGCTTCAGTCAGAAGATCCCTGTTTAAACAATGCAGAGAGGGCCAAAGTTTC
TCTCTCATCTTGTGATGGTGTAAACGAATACTGGAAAACCCACAGAGTTTATCAGACCCAAACAATTA
CCATGAGTTTTGCAGACTACTGGCCGATTGAAGAGTAACATCAACTGGGAGAATTGGTAAAGGTGGAA
AACTACCTGAGGTCATCCGATTGATAGCCAATTCACAGTGACCAGCCTACAGCACTGGGAATTTGCTC
CAAATAGTGTGCACTATCTTCTGAGCCTGTGGCAGCGGCTGGCAGCCTCTGTGCCGTATGTCAAAGCCAC
AGACCCCAATGCTGGAAACTTACTCTGAGGTCACCAAAGCCTACATCACATCCCGTTGGAATCT
GTGCACATCACTGAGAGATGGCCTGGAAGATCCCTGGAGGATACGGGGCTGGTCCAGCAGCAGTTGG
ACCAGCTGTCCACCATTTGGCGTTGTGAATATGAGAAGACGTGTGCACTCCTCGTGCAGTTGTTTGACCA
GTCGGCCAGTCGTACCAGGAGCTGCTACAGAGGCCAGCGCAAGCCCAATGGACATTGCAGTGCAGGAG



[View online »](#)

GGAAGGCTGACATGGCTGGTTTACATTATTGGAGCAGTGATCGGTGGCCGGGTTTCTTTTCCAGCACTG
 ATGAGCAAAGCGCCATGGATGGTGGAGCTTGTCTGTGCGGTGCTCCAGCTGATGAACCTAACAGATTCTCG
 TTTGGCCAGGCGGGTAAAGAGAAGCTAGAGTTGGCCATGCTGAGCTTTTTTGAACAGTTTCTGAAGATC
 TACATTGGGGACCAAGTGCAGAAATCCTCTAAGCTGTACCGCCGACTCTCAGAAGTTCTGGGCTTGAATG
 ATGAGACCATGGTCTAAGCGTCTTCATAGGAAAAATCATACCAACTTGAAGTACTGGGCGCTTGTGA
 ACCAATCACCTCCAAGACACTACAGCTTCTCAATGACCTGTCCATTGGGTACAGTAGCCTAAGGAAGCTA
 GTGAAGCTTAGTGCGGTACAGTTTATGCTGAACCAATCACACGAGCGAGCACTTTTCAATTTTGGGTATTA
 ACAATCAGTCCAACCTGACAGACATGCGGTGTCGGACTACCTTCTACACAGCACTTGGGCGTCTCCCTCAT
 GGTGGATTTAGGAGAGGATGAAGATCAGTATGAGCAGTTCATGCTGCCACTCACAGCAGCATTTGAGGCT
 GTGGCCAGATGTTTAGCACCAATAGTTTCAACGAGCAGGAGGCAAAGCGAACTCTAGTTGGCCTAGTAA
 GAGACCTGAGAGGGATCGCTTTCGCTTTCATGCCAAGACCAGCTTTCATGATGCTCTTGAATGGATATA
 TCCATCTATATGCCAATCTCCAACGGGCAATTGAGCTCTGGTACCATGATCCAGCCTGTACTACACCT
 GTACTCAAGTTGATGGCTGAATTGGTTCATAATAGGTCCCAGCGACTCCAGTTTGTGTCTCTTCCCCCA
 ATGGCATCTTACTCTCCGAGAAACCAGCAAGATGATAACAATGTATGGCAATCGCATCCTGACACTAGG
 AGAGTCCCAAAGGATCAGGTCTATGCTCTGAAGCTCAAGGGCATCTCCATCTACTTCTCCATGCTGAAG
 GCTGCTCTCAGTGGGAGTTACGTCAATTCGGAGTCTTTCGTCTCTATGGAGACGATGCCCTGGACAATG
 CTCTGCAGACCTTCATCAAGCTGCTCTCTATTCTCACAGTGATCTCTTGGATTACCCCAAGCTCAG
 CAGTCTTATTACTACTGGAAGTCTGACCCAGGACCATATGAACTTTATTGCAAGCTGGAACCT
 CACGTCATCATGTATATTCTCTTCCATTTCTGAAGGACTTACTGCACTTGACACCATGGTATGCACAG
 GCTGCTGCTCCTGCTGGACCACATTGTGACATACCTCTCAAGCAGCTGTACAGTAGCACAAGAAGAG
 GACCACACCCCTGAACCAGGAGAGCGACCGCTTTCGCACATCATGCAGCAGCATCCAGAGATGATCCAG
 CAGATGCTGTCCCGGTGCTGAACATCATCATCTTTGAAGACTGTAGGAACCAGTGGTCTATGTCCCGAC
 CACTACTTGGCTTGATATTGCTTAAATGAAAAGTATTTTTCTGACCTAAGAAACAGTATTGTGAACAGCCA
 GCCACCGGAGAAGCAGCAGGCCATGCACCTGTGTTTTGAGAACCCTGATGGAAGGCATCGAGCGAAATCTT
 CTACGAAAAACAGAGACAGGTTACCCAGAACCCTGTCAGCATTCCGTCGAGAAGTCAACGACTCAATGA
 AGAATCCACTTATGGCGTGAATAGCAATGACATGATGAGC

ACGCGTACGCGGCCGCTCGAGCAGAAACTCATCTCAGAAGAGGATCTGGCAGCAAATGATATCCTGGATT
 ACAAGGATGACGACGATAAGGTTTAA

Protein Sequence:

>RC205979 protein sequence
 Red=Cloning site Green=Tags(s)

MADHVQSLAQLLENLCKQLYETDTRRQLQAEKALVEFTNSPDCLSKCQLLLERGSSSYSQLLAATCLTKL
 VSRNPLPLEQRIDIRNYVLNLAIRPKLATFVTQALIQLYARITKLGWFDQKDDYVFRNAITDVTRF
 LQDSVEYCIIGVTILSQLTNEINQADTTPLTKHRKIASFRDSSLFDIFTLSCNLLKQASGKNLNLNDE
 SQHGLLMQLLKLTHNCLNFDFIGTSTDESSDLCTVQIPTSWRSAFLDSSTLQLFFDLYHSIPPSF SPLV
 LSCLVQIASVRRSLFNNAERAKFLSHLVDGVKRIENPQSLSDPNNYHEFCRLLARLKSNYQLGELVKVE
 NYPEVIRLIANFTVTSLQWHEFAPNSVHYLLSLWQRLAASVPYVKATDPHMLETYTPEVTKAYITSRLES
 VHIILRDGLEDPLEDTGLVQQQLDQLSTIGRCEYEKTCALLVQLFDQSAQSYQELLQSASASPMEDIAVQE
 GRLTWLVYIIGAVIGGRVSFASTDEQDAMDGELVCRVLQMLNLTDSRLAQAGNEKLELAML SFFEQRKI
 YIGDQVQKSSKLYRRLSEVLGLNDETMVLSVFIGKIITNLKYWGRCEPITSKTLQLLNDLSIGYSSVRKL
 VKLSAVQFMLNNHTSEHFSFLGINNQSNTDMRCRTTFYALGRLLMVDLGEDEDQYEQFMLPLTAAFEA
 VAQMFSTNSFNEQAKRTL VGLVRDLRGIAFAFNAKTSFMMLEWYIYPSYMPILQRATIELWYHDPACTTP
 VLKLM AELVHNRSQRLQFDVSSPNGILLFRETSMITMYGNRILTLGEVPKDQVYALKLKGISYIF SMLK
 AALSGSYVNFVGFRLYGDALDNALQTFIKLLLSIPHSDLLDYPKLSQSYSLLEVLTDHMFNFIASLEP
 HVIMYILSSISEGLTALDVTGCTGCCSCLDHIVTYL FKQLSRSTKRRTPLNQESDRFLHIMQHP EMIQ
 QMLSTVLNIIIFEDCRNQWMSRPLLGLILLNEKYFSDLRNSIVNSQPPEKQQAMHLCFENLMEGIERNL
 LTKNRDRFTQNL SAFRREVNDMSKNSTYGVNSNDMMS

TRTRPLEQKLI SEEDLAANDILDYKDDDDKV

Chromatograms:

https://cdn.origene.com/chromatograms/mk6141_g12.zip

UniProt ID: [Q9UIA9](#)

Cytogenetics: 8p21.3

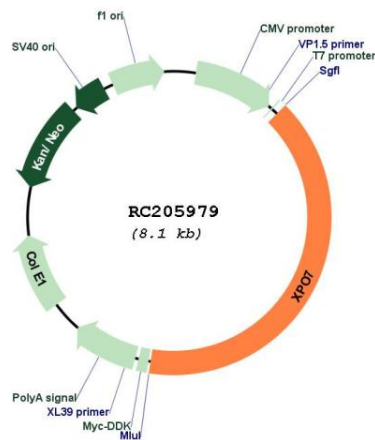
Domains: IBN_NT

Protein Families: Druggable Genome

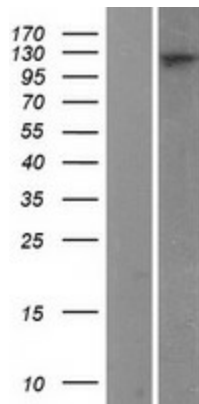
MW: 124 kDa

Gene Summary: The transport of protein and large RNAs through the nuclear pore complexes (NPC) is an energy-dependent and regulated process. The import of proteins with a nuclear localization signal (NLS) is accomplished by recognition of one or more clusters of basic amino acids by the importin-alpha/beta complex; see MIM 600685 and MIM 602738. The small GTPase RAN (MIM 601179) plays a key role in NLS-dependent protein import. RAN-binding protein-16 is a member of the importin-beta superfamily of nuclear transport receptors.[supplied by OMIM, Jul 2002]

Product images:



Circular map for RC205979



Western blot validation of overexpression lysate (Cat# [LY402402]) using anti-DDK antibody (Cat# [TA50011-100]). Left: Cell lysates from untransfected HEK293T cells; Right: Cell lysates from HEK293T cells transfected with RC205979 using transfection reagent MegaTran 2.0 (Cat# [TT210002]).