

Product datasheet for **RC205974**

Nudel (NDEL1) (NM_030808) Human Tagged ORF Clone

Product data:

Product Type:	Expression Plasmids
Product Name:	Nudel (NDEL1) (NM_030808) Human Tagged ORF Clone
Tag:	Myc-DDK
Symbol:	Nudel
Synonyms:	EOPA; MITAP1; NDE1L1; NDE2; NUDEL
Mammalian Cell Selection:	Neomycin
Vector:	pCMV6-Entry (PS100001)
E. coli Selection:	Kanamycin (25 ug/mL)
ORF Nucleotide Sequence:	>RC205974 ORF sequence Red=Cloning site Blue=ORF Green=Tags(s)

TTTTGTAATACGACTCACTATAGGGCGGCCGGAATTCGTCGACTGGATCCGGTACCGAGGAGATCTGCC
GCC**CGATCGCC**

ATGGATGGTGAAGATATACCAGATTTTTCAAGTTTAAAGGAGGAACTGCTTATTGGAAGGAACTTCTCT
TGAAGTATAAGCAAAGCTTCCAGGAAGCTCGGGATGAGCTAGTTGAATCCAGGAAGGAAGCAGAGAATT
AGAAGCAGAGTTGGAGGCACAATTAGTACAGGCTGAACAAAGAAATAGAGACTTGCAGGCTGATAACCAA
AGACTGAAATATGAAGTGGAGGCATTAAGGAGAAGCTAGAGCATCAATATGCACAGAGCTATAAGCAGG
TCTCAGTGTAGAAAGATGATTTAAGTCAGACTCGGGCCATTAAGGAGCAGTTGCATAAGTATGTGAGAGA
GCTGGAGCAGGCCAACGACGACCTGGAGCGAGCCAAAAGGGCAACAATAGTTTCACTGGAAGACTTTGAA
CAAAGGCTAAACCAGGCCATTGAACGAAATGCATTTTTAGAAAAGTGAAGTGGATGAAAAGGAATCTTTGT
TGGTCTCTGTACAGAGGTTAAAGGATGAAGCAAGAGATTTAAGGCAAGAACTAGCAGTTCGGGAAAGACA
ACAGGAAGTAACTAGAAAAGTCGGCTCCTAGCTCTCAACTCTAGACTGTGAAAAGATGGACTCCGCCGTC
CAAGCATCACTTTCTTTGCCAGCTACCCCTGTTGGCAAAGGAACGGAGAACAATTTCTTCAACCGAAAG
CTATACCAAATGGTTTTGGTACCAGTCCACTAACTCCCTCTGCTAGGATATCAGCACTAAACATCGTGGG
GGATCTTTACGAAAAGTAGGGGCTTTAGAATCCAATTAGCAGCTTGCAGGAATTTTGCAAAAGGACCAA
GCATCACGAAAATCCTATATTTACAGGAATGTTAACTGTGGGTGCTGAATGGCAATGGCACAAGTTCT
CTCGATCAGGGCATACTTTCTTCGACAAAGGGGCAGTAAACGGCTTTGACACAGCTCCTCCTCCTCC
TGGTCTGGGCTCCTCGCTCCATCGTCAGCGCCGGGTATGCTACCTCTCAGTGTG

ACGCGTACGCGGCCGCTCGAGCAGAACTCATCTCAGAAGAGGATCTGGCAGCAAATGATATCCTGGATT
ACAAGGATGACGACGATAAGGTTTAA



[View online »](#)

Protein Sequence: >RC205974 protein sequence
 Red=Cloning site Green=Tags(s)

MDGEDIPDFSSLKEETAYWKELSLKYKQSFQEARDELVEFQEGSRELEAELEAQLVQAEQRNRDLQADNQ
 RLKYEVEALKKEKLEHQYAQSYKQVSVLEDDLSTRAIKEQLHKYVRELEQANDDLERAKRATIVSLED
 FEQRLNQAIERNAFLESELDEKESLLVSVQRLKDEARDLRQELAVRERQEQEVTRKSAPSSPTLDCEK
 MDSAVQASLSLPATPVGKGTENTFPSPKAIPNGFGTSPLTPSARISALNIVGDLLRKGVALESKLAAC
 RNF AKDQASRSYISGNVNCVNLNGNGTKFSRSGHSTSFDFKGA VNGFDTAPPPPG LGSSRPSAPGMLPLSV

TRTRPLEQKLISEEDLAANDILDYKDDDDKV

Chromatograms: https://cdn.origene.com/chromatograms/mk6317_f07.zip

Restriction Sites: SgfI-MluI

Cloning Scheme:

Cloning sites used for ORF Shuttling:



* The last codon before the Stop codon of the ORF

ACCN: NM_030808

ORF Size: 1035 bp

OTI Disclaimer: The molecular sequence of this clone aligns with the gene accession number as a point of reference only. However, individual transcript sequences of the same gene can differ through naturally occurring variations (e.g. polymorphisms), each with its own valid existence. This clone is substantially in agreement with the reference, but a complete review of all prevailing variants is recommended prior to use. [More info](#)

OTI Annotation: This clone was engineered to express the complete ORF with an expression tag. Expression varies depending on the nature of the gene.

Components: The ORF clone is ion-exchange column purified and shipped in a 2D barcoded Matrix tube containing 10ug of transfection-ready, dried plasmid DNA (reconstitute with 100 ul of water).

Reconstitution Method:

1. Centrifuge at 5,000xg for 5min.
2. Carefully open the tube and add 100ul of sterile water to dissolve the DNA.
3. Close the tube and incubate for 10 minutes at room temperature.
4. Briefly vortex the tube and then do a quick spin (less than 5000xg) to concentrate the liquid at the bottom.
5. Store the suspended plasmid at -20°C. The DNA is stable for at least one year from date of shipping when stored at -20°C.

RefSeq: [NM_030808.5](#)

RefSeq Size: 2407 bp

RefSeq ORF: 1038 bp

Locus ID: 81565

UniProt ID: [Q9GZM8](#)

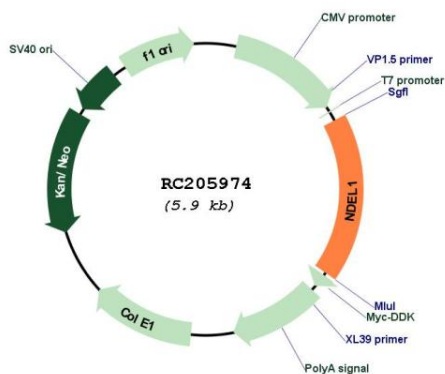
Cytogenetics: 17p13.1

Domains: NUDE_C

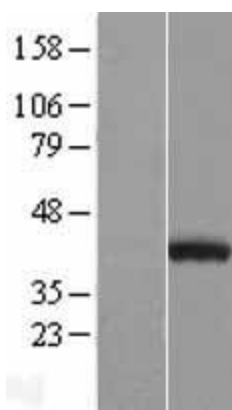
MW: 38.4 kDa

Gene Summary: This gene encodes a coiled-coil protein that plays a role in multiple processes including cytoskeletal organization, cell signaling and neuron migration, outgrowth and maintenance. Alternatively spliced transcript variants encoding multiple isoforms have been observed for this gene, and a pseudogene of this gene is located on the long arm of chromosome X. [provided by RefSeq, Mar 2012]

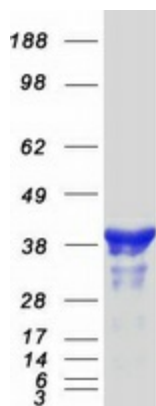
Product images:



Circular map for RC205974



Western blot validation of overexpression lysate (Cat# [LY410703]) using anti-DDK antibody (Cat# [TA50011-100]). Left: Cell lysates from untransfected HEK293T cells; Right: Cell lysates from HEK293T cells transfected with RC205974 using transfection reagent MegaTran 2.0 (Cat# [TT210002]).



Coomassie blue staining of purified NDEL1 protein (Cat# [TP305974]). The protein was produced from HEK293T cells transfected with NDEL1 cDNA clone (Cat# RC205974) using MegaTran 2.0 (Cat# [TT210002]).