

Product datasheet for **RC205972**

TEX11 (NM_031276) Human Tagged ORF Clone

Product data:

Product Type:	Expression Plasmids
Product Name:	TEX11 (NM_031276) Human Tagged ORF Clone
Tag:	Myc-DDK
Symbol:	TEX11
Synonyms:	MZIP4; SPGFX2; Spo22; TGC1; TSGA3; ZIP4; ZIP4H
Mammalian Cell Selection:	Neomycin
Vector:	pCMV6-Entry (PS100001)
E. coli Selection:	Kanamycin (25 ug/mL)



[View online »](#)

ORF Nucleotide Sequence:

>RC205972 ORF sequence
 Red=Cloning site Blue=ORF Green=Tags(s)

TTTTGTAATACGACTCACTATAGGGCGGCCGGAATTCGTCGACTGGATCCGGTACCGAGGAGATCTGCC
 GCC**CGCATCGCC**

ATGGACAATGATGATTTTTTTTCCATGGACTTTAAGAAGTTGTTGAAAACCTGGTTACAATGATAATT
 CACCTAACATACCAGAGGCAATTGATAGACTCTTCAGCGACATAGCAAATATCAACAGGGAGTCTATGGC
 TGAAATAACAGACATTCAGATTGAAGAAATGGCAGTAAACCTATGAAACTGGGCCTTACCATAGGAGGA
 GGTTGGCTTGAAATGAAGAGCAGAAAATTAGATTACATTATGTTGCTTGCAAGTTGCTGAGTATGTGTG
 AAGCCTCATTTCCTCAGAACAAAGTATCAACGACTGATTATGATGAATATGAGAATAGGAAAAGAATG
 GTTGGATGCTGGAATTTTCTAATCGCTGATGAATGTTTTCAAGCTGCTGTGGCCAGTCTGGAGCAATTA
 TACGTCAAATTAATCAAAGGAGCTCCCCTGAGGCTGACTTGACCATGGAGAAGATTACTGTTGAGAGTG
 ACCACTCAGAGTGCTTTCTTACCAAGCAGAGTCAGCAGTTGCTCAAGGGGATTTTCAAAGAGCATCTAT
 GTGTGACTGCAATGTAAGATATGTTGATGAGGCTCCCCAGATGACTTCAAGTCTTCATCATCTCTGT
 TACAACTTTGGAGTAGAAACCCAGAAGAATAATAAATATGAAGAAAGTTCTTTCTGGCTTAGCCAAAGCT
 ATGATATTGGGAAGATGGATAAGAAATCTACTGGCCAGAAATGCTGGCTAAAGTTCTACGGCTATTAGC
 CACGAATTATTTGGATTGGGATGACACCAAATATTATGATAAGGCTCTCAATGCTGTAACCTAGCAAAC
 AAGGAACATTTAAGTTCTCCTGGGCTTTTCTTAAAAATGAAAATCCTCTTGAAAGGCGAAACATCTAATG
 AAGAACTCCTTGAAGCTGTCATGGAAATACTACATCTTGACATGCCCTTAGACTTCTGTCTGAACATTGC
 TAAACTGCTGATGGATCATGAAAGAGAATCTGTTGGGTTTCATTTCTGACGATTATTCATGAACGTTTT
 AAGTCATCGGAAAATATTGAAAAGTTCTGATACTCCATACTGACATGCTTTTACAAAGGAAGGAAGAAC
 TTCTTGCCAAGGAGAAGATTGAAGAAATCTTTTTAGCTCACAAACAGGAAGACAACGACAGCAATC
 AATGAACCTGGTTACACAACATTCGTGGAGACAAGCTGCCAGTAGTTTTGAGGTACAAAATTACACTGAT
 GCCCTACAATGGTACTATTATTCTGAGGTTTTATTCAACTGATAAAAATGGATCTGGACTTACCAAGC
 TGCAGAGGAACATGGCTTGTGTACTGAAATTTGCAACAACCTTGATAAGGCCAAAGAGGCAAGTGGCAGA
 AGCTGAACGACATGACCCTAGGAACGTTTTCACTCAATTTTATATATTCAAGATTGCAGTCATAGAGGGC
 AACTCTGAAAGAGCTTTGCAGGCAATAATTACTTTAGAGAATATATTAACAGATGAAGAGTCAGAAGATA
 ATGATCTAGTTGCAGAGAGAGGTTACCTACCATGCTTCTAAGTTTAGCTGCCAGTTTGTCTAGAGAA
 TGGACAACAAATTTGGCAGAAAAAGCTTTGGAATATTTAGCTCAACATTCAGAAGACCAGGAACAAGTT
 CTTACAGCTGTAAGTGTGTTGCTTCTGTTTTCTTCTCCAAAAATGCTGAAATGCCGGAATCTGAAGATA
 AGAAGAAAAGAAATGGATCGACTTTTGACTTGCCTGAATAGAGCCTTTGTGAAACTTTCTCAGCCTTTTGG
 TGAAGAAGCCTTAAGTTTGGAGTCAAGAGCTAATGAAGCTCAGTGGTTTCGAAAAACAGCTTGGAACTTG
 GCTGTGCAATGTGACAAAGATCCAGTGTGATGAGAGAGTTTTTTATACTTTCTTATAAGATGTCCCAGT
 TTTGTCCTTCTGATCAAGTAATTCTGATTGCACGGAAAACATGTTTACTTATGGCAGTTGCAGTTGATCT
 AGAGCAAGGGAGAAAAGCTTCAACAGCTTTTGAACAGACCATGTTCTGAGTCGTGCACTTGAGGAGATC
 CAGACATGCAATGACATCCATAATTTCTGAAACAAACAGGGACCTTCTCAAATGATTCATGTGAGAAAT
 TGCTTCTGCTGTACGAGTTTGAAGTTAGAGCCAAATTGAATGATCCATTACTGAAAAGCTTCTGGAATC
 AGTGTGGGAGTTGCCTCATTTAGAAAATAAAACATTTGAAACAATTGCAATAATAGCAATGGAAAAGCCT
 GCACACTATCCTTTGATTGCTCTCAAGGCCTTGA AAAAGGCTTTATTGCTCTACAAAAAGGAAGAACCAA
 TTGATATATCACAAATACAGCAAATGTATGCACAACCTGGTTAACCTCTCAGTGCCAGATGGGGCGTCGAA
 TGTAGAGCTCTGTCCCCTGGAAGAAGTTTGGGGCTATTTTGAAGACGCTCTGAGCCACATTAGCCGCACT
 AAAGACTACCCAGAAATGGAGATTCTCTGGCTGATGGTCAAGTCTGGAATACCGGAGTACTTATGTTTA
 GCAGGAGCAAGTATGCATCTGCTGAAAAGTGGTGTGGCTGGCCTTGGCTTCTTAAACCACCTACCTC
 CTTCAAGGAAAGCTATGAAACTCAGATGAATATGCTGTATAGTCAGCTTGTGGAAGCATTGAGTAACAAC
 AAGGGCCAGTTTTTCATGAACATGGCTACTGGAGCAAGTCAGAT

ACGCGTACGCGGCCGCTCGAGCAGAAACTCATCTCAGAAGAGGATCTGGCAGCAAATGATATCCTGGATT
 ACAAGGATGACGACGAT AAGGTTTAA

Protein Sequence: >RC205972 protein sequence
 Red=Cloning site Green=Tags(s)

```

MDNDDFFSMDFKVEVVENLVTNDNSPNIPEAIDRLFSDIANINRESMAEITDIQIEEMAVNLWNWALTIGG
GWL VNEEQKIRLHYVACKLLSMCEASFASEQSIQRLIMNMNRIGKEWLDAGNFLIADCEFQAASVLEQL
YVKLIQRSSPEADLTMEKITVESDHFVRLSYQAESAVAQGFQRASMCVLQCKDMLMRLPQMTSSLHLLC
YNFGVETQKNNKYEESSFWLSQSYDIGKMDKSTGPEMLAKVLRLLATNYLDWDDTKYYDKALNAVNLAN
KEHLSSPGLFLKMKILLKGETSNEELLEAVMEILHLDMPDFCLNIAKLLMDHERESVGFHFLTIHERF
KSEENIGKVLILHTDMLLQRKEELLAKEKIEEIFLAHQTRQLTAESMNWLHNILWRQAASSFEVQNYTD
ALQWYYSRFRYSTDKMDLDFTKLQRNMACCYLNLQQLDKAKEAVAEERHDPNVFTQFYIFKIAVIEG
NSERALQAIITLENILTDEESEDNDLVAERGSPTMLLSLAAQFALENGQQIVA EKALEYLAQHSDEQEQV
LTAVKCLLRFLLPKIAEMPESEDKKKEMDRLLTCLNRAFVKLSQPFGEALSLSRANEAWFRKTAWN
AVQCDKDPVMMREFFILSYKMSQFCPSDQVILIARKTCLLMAVAVDLEQGRKASTAFEQTMFLSRALEEI
QTCNDIHNFLKQTGTFSDNSCEKLLLLYEFVRAKLNPLLESFLESVWELPHLETKTFTETIAIIAMEKP
AHYPLIALKALKKALLLYKKEEPIDISQYSKCMHNLVNLVSPDGASNVELCPLEEVWGYFEDALSHISRT
KDYPEMELWLMVKSNTGVLMSRSKYASA EKWCGLALRFLNHLTSFKESYETQMMLYSQLVEALSNN
KGPVFHEHGYWSKSD
  
```

TRTRPLEQKLISEEDLAANDILDYKDDDDKV

Chromatograms: https://cdn.origene.com/chromatograms/mk6320_e12.zip

Restriction Sites: SgfI-MluI

Cloning Scheme:

Cloning sites used for ORF Shuttling:



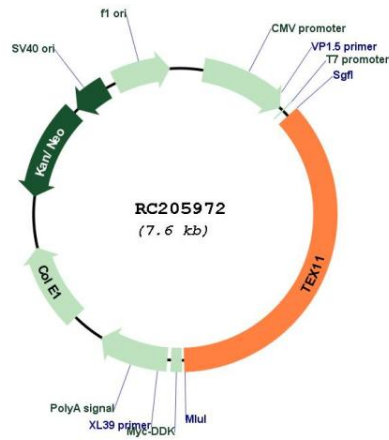
* The last codon before the Stop codon of the ORF

ACCN: NM_031276

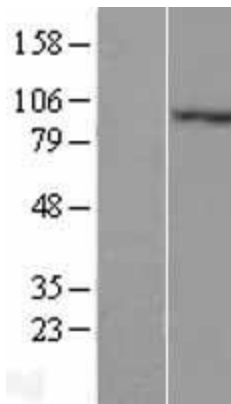
ORF Size: 2775 bp

OTI Disclaimer:	The molecular sequence of this clone aligns with the gene accession number as a point of reference only. However, individual transcript sequences of the same gene can differ through naturally occurring variations (e.g. polymorphisms), each with its own valid existence. This clone is substantially in agreement with the reference, but a complete review of all prevailing variants is recommended prior to use. More info
OTI Annotation:	This clone was engineered to express the complete ORF with an expression tag. Expression varies depending on the nature of the gene.
Components:	The ORF clone is ion-exchange column purified and shipped in a 2D barcoded Matrix tube containing 10ug of transfection-ready, dried plasmid DNA (reconstitute with 100 ul of water).
Reconstitution Method:	<ol style="list-style-type: none">1. Centrifuge at 5,000xg for 5min.2. Carefully open the tube and add 100ul of sterile water to dissolve the DNA.3. Close the tube and incubate for 10 minutes at room temperature.4. Briefly vortex the tube and then do a quick spin (less than 5000xg) to concentrate the liquid at the bottom.5. Store the suspended plasmid at -20°C. The DNA is stable for at least one year from date of shipping when stored at -20°C.
RefSeq:	NM_031276.2 , NP_112566.2
RefSeq Size:	3029 bp
RefSeq ORF:	2778 bp
Locus ID:	56159
UniProt ID:	Q8IYF3
Cytogenetics:	Xq13.1
MW:	106.7 kDa
Gene Summary:	This gene is X-linked and is expressed in only male germ cells. Two alternatively spliced transcript variants encoding distinct isoforms have been found for this gene. [provided by RefSeq, Jul 2008]

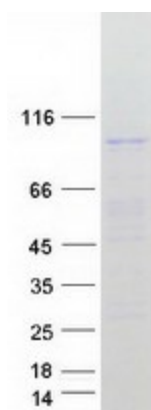
Product images:



Circular map for RC205972



Western blot validation of overexpression lysate (Cat# [LY410613]) using anti-DDK antibody (Cat# [TA50011-100]). Left: Cell lysates from untransfected HEK293T cells; Right: Cell lysates from HEK293T cells transfected with RC205972 using transfection reagent MegaTran 2.0 (Cat# [TT210002]).



Coomassie blue staining of purified TEX11 protein (Cat# [TP305972]). The protein was produced from HEK293T cells transfected with TEX11 cDNA clone (Cat# RC205972) using MegaTran 2.0 (Cat# [TT210002]).