

Product datasheet for RC205969

TM2D1 (NM_032027) Human Tagged ORF Clone

Product data:

Product Type: Expression Plasmids
Product Name: TM2D1 (NM_032027) Human Tagged ORF Clone
Tag: Myc-DDK
Symbol: TM2D1
Synonyms: BBP
Mammalian Cell Selection: Neomycin
Vector: pCMV6-Entry (PS100001)
E. coli Selection: Kanamycin (25 ug/mL)
ORF Nucleotide Sequence: >RC205969 ORF sequence
 Red=Cloning site Blue=ORF Green=Tags(s)

TTTTGTAATACGACTCACTATAGGGCGCCGGGAATTCGTCGACTGGATCCGGTACCGAGGAGATCTGCC
 GCCCGCATCGCC

ATGGCGGCCCGCTGGCCGTCTGGTCCGTCTGCTCCGGAGGCCGTGACGGCCAGACTCGTTGGTGTCTGT
 GGTTTCGTCTCAGTCACTACAGGACCCTGGGGGCTGTTGCCACCTCCGCCGGGGCGAGGAGTGCCTTAA
 GTGCGAGGACCTCAAAGTGGGACAATATATTTGTAAGATCCAAAAATAAATGACGCTACGCAAGAACCA
 GTTAACTGTACAACTACACAGCTCATGTTTCTGTTTTCCAGCACCCAACATAACTTGAAGGATTCCA
 GTGGCAATGAAACACATTTTACTGGGAACGAAGTTGGTTTTTCAAGCCATATCTTGCCGAAATGTA
 TGGCTATTCTACAAAGTGGCAGTCGCATTGTCTCTTTTTCTTGGATGGTTGGGAGCAGATCGATTTTAC
 CTTGGATACCCTGCTTTGGGTTTGTAAAGTTTTGCACTGTAGGTTTTGTGGAATTTGGGAGCCTAATTG
 ATTTCAATCTTATTTCAATGCAGATTGTTGGACCTTCAGATGGAAGTAGTTACATTATAGATTACTATGG
 AACCAGACTTACAAGACTGAGTATTACTAATGAAACATTTAGAAAAACGCAATTATATCCA

ACGCGTACGCGGCCGCTCGAGCAGAACTCATCTCAGAAGAGGATCTGGCAGCAATGATATCCTGGATT
 ACAAGGATGACGACGATAAGGTTTAA

Protein Sequence: >RC205969 protein sequence
 Red=Cloning site Green=Tags(s)

MAAAWPSGPSAPEAVTARLVGLVWFVSVTTGPWGAVATSAGGEESLKCEDLVKGQYICKDPKINDATQEP
 VNCTNYTAHVSCFPAPNITCKDSSGNETHFTGNEVGFFKPISCRNVNGYSYKVAVALSLFLGWLADRFY
 LGYPALGLLKFCVTGFCGIGSLIDFILISMQIVGPSDGSSYIIDYYGTRLTRLSITNETFRKTQLYP

TRTRPLEQKLISEEDLAANDILDYKDDDDKV

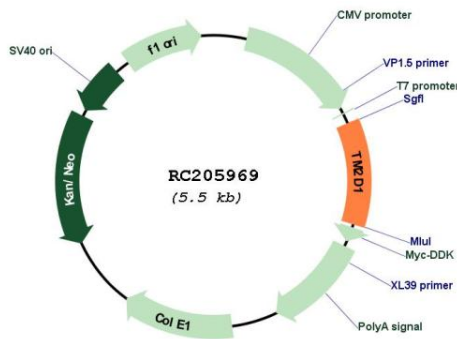


[View online »](#)

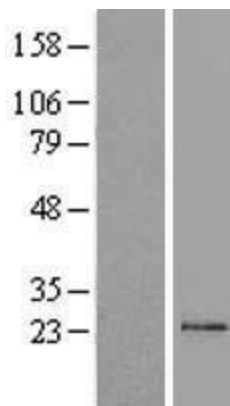
UniProt ID: [Q9BX74](#)
Cytogenetics: 1p31.3
Domains: TM2
Protein Families: Druggable Genome, Transmembrane
MW: 22.3 kDa
Gene Summary:

The protein encoded by this gene is a beta-amyloid peptide-binding protein. It contains a structural module related to that of the seven transmembrane domain G protein-coupled receptor superfamily and known to be important in heterotrimeric G protein activation. Beta-amyloid peptide has been established to be a causative factor in neuron death and the consequent diminution of cognitive abilities observed in Alzheimer's disease. This protein may be a target of neurotoxic beta-amyloid peptide, and may mediate cellular vulnerability to beta-amyloid peptide toxicity through a G protein-regulated program of cell death. Several transcript variants have been found for this gene. [provided by RefSeq, Feb 2016]

Product images:



Circular map for RC205969



Western blot validation of overexpression lysate (Cat# [LY410360]) using anti-DDK antibody (Cat# [TA50011-100]). Left: Cell lysates from untransfected HEK293T cells; Right: Cell lysates from HEK293T cells transfected with RC205969 using transfection reagent MegaTran 2.0 (Cat# [TT210002]).