

Product datasheet for **RC205968**

CTRP5 (C1QTNF5) (NM_015645) Human Tagged ORF Clone

Product data:

Product Type:	Expression Plasmids
Product Name:	CTRP5 (C1QTNF5) (NM_015645) Human Tagged ORF Clone
Tag:	Myc-DDK
Symbol:	CTRP5
Synonyms:	CTRP5; MFRP
Mammalian Cell Selection:	Neomycin
Vector:	pCMV6-Entry (PS100001)
E. coli Selection:	Kanamycin (25 ug/mL)
ORF Nucleotide Sequence:	>RC205968 representing NM_015645 Red=Cloning site Blue=ORF Green=Tags(s)

TTTTGTAATACGACTCACTATAGGGCGGCCGGAATTCGTCGACTGGATCCGGTACCGAGGAGATCTGCC
GCC**CGATCGCC**

ATGAGGCCACTCCTCGTCTGCTCCTGGGCCGCGGCCGGCTCGCCCCACTGGACGACAACAAGA
TCCCCAGCCTTGCCCGGGGCACCCGGCCTTCCAGGCACGCCGGGCCACCATGGCAGCCAGGGCTTGCC
GGGCCGCGATGGCCGCGACGGCCGCGACGGCGCGCCCGGGGCTCCGGGAGAGAAAGGCGAGGGCGGGAGG
CCGGGACTGCCGGACCTCGAGGGGACCCGGGCCGCGAGGAGAGCGGGACCCGCGGGGCCACCGGGC
CTGCCGGGAGTGCTCGGTGCCTCCGCGATCCGCCTTCAGCGCCAAGCGCTCCGAGAGCCGGGTGCCTCC
GCCGTCTGACGCACCCCTTGCCCTTCGACCGCGTCTGGTGAACGAGCAGGGACATTACGACGCCGTCAAC
GGCAAGTTCACCTGCCAGGTGCCTGGGGTCTACTACTTCGCCGTCCATGCCACCGTCTACCGGGCCAGCC
TGCAAGTTGATCTGGTGAAGAAATGGCGAATCCATTGCCTCTTTCTCCAGTTTTTCGGGGGGTGGCCAA
GCCAGCCTCGCTCTCGGGGGGGCCATGGTGAAGCTGGAGCCTGAGGACCAAGTGTGGGTGCAGGTGGGT
GTGGGTGACTACATTGGCATCTATGCCAGCATCAAGACAGACAGCACCTTCTCCGGATTTCTGGTGTACT
CCGACTGGCACAGCTCCCCAGTCTTTGCT

ACGCGTACGCGGCCGCTCGAGCAGAAACTCATCTCAGAAGAGGATCTGGCAGCAAATGATATCCTGGATT
ACAAGGATGACGACGATAAGGTTTAA



[View online »](#)

Protein Sequence: >RC205968 representing NM_015645
Red=Cloning site Green=Tags(s)

MRPLLVLVLLGLAAGSPPLDDNKIPSLCPGHPGLPGTPGHHSQGLPGRDGRDGRDGAPGAPGEKGEGR
 PGLPGPRGDPGRGEAGPAGPTGPAGECSVPPRSFAFSAKRSESRVPPPSDAPLPFDRVLVNEQGHYDAVT
 GKFTCQVPGVYFVAVHATVYRASLQFDLVKNGESIASFFQFFGGWPKPASLGGAMVRLPEPQVWVQVG
 VGDYIGIYASIKTDSTFSGFLVYSDWHSSPVFA

TRTRPLEQKLISEEDLAANDILDYKDDDDKV

Chromatograms: https://cdn.origene.com/chromatograms/mk8113_b02.zip

Restriction Sites: SgfI-MluI

Cloning Scheme:



ACCN: NM_015645

ORF Size: 729 bp

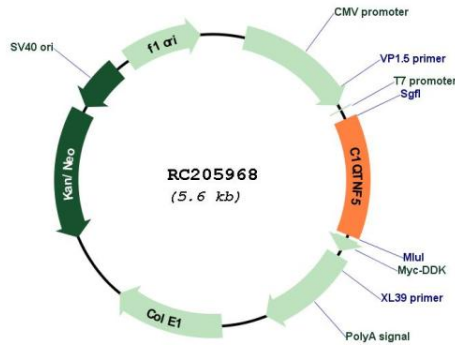
OTI Disclaimer: Due to the inherent nature of this plasmid, standard methods to replicate additional amounts of DNA in E. coli are highly likely to result in mutations and/or rearrangements. Therefore, OriGene does not guarantee the capability to replicate this plasmid DNA. Additional amounts of DNA can be purchased from OriGene with batch-specific, full-sequence verification at a reduced cost. Please contact our customer care team at custsupport@origene.com or by calling 301.340.3188 option 3 for pricing and delivery.

The molecular sequence of this clone aligns with the gene accession number as a point of reference only. However, individual transcript sequences of the same gene can differ through naturally occurring variations (e.g. polymorphisms), each with its own valid existence. This clone is substantially in agreement with the reference, but a complete review of all prevailing variants is recommended prior to use. [More info](#)

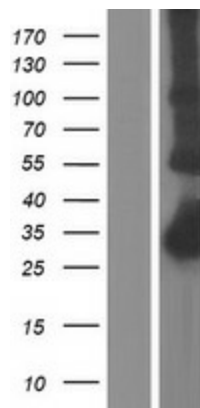
OTI Annotation: This clone was engineered to express the complete ORF with an expression tag. Expression varies depending on the nature of the gene.

Components:	The ORF clone is ion-exchange column purified and shipped in a 2D barcoded Matrix tube containing 10ug of transfection-ready, dried plasmid DNA (reconstitute with 100 ul of water).
Reconstitution Method:	<ol style="list-style-type: none">1. Centrifuge at 5,000xg for 5min.2. Carefully open the tube and add 100ul of sterile water to dissolve the DNA.3. Close the tube and incubate for 10 minutes at room temperature.4. Briefly vortex the tube and then do a quick spin (less than 5000xg) to concentrate the liquid at the bottom.5. Store the suspended plasmid at -20°C. The DNA is stable for at least one year from date of shipping when stored at -20°C.
RefSeq:	<u>NM_015645.5</u>
RefSeq Size:	3927 bp
RefSeq ORF:	732 bp
Locus ID:	114902
UniProt ID:	<u>Q9BXJ0</u>
Cytogenetics:	11q23.3
Domains:	C1Q, Collagen
Protein Families:	Secreted Protein
MW:	25.3 kDa
Gene Summary:	This gene encodes a member of a family of proteins that function as components of basement membranes and may play a role in cell adhesion. Mutations in this gene have been associated with late-onset retinal degeneration. The protein may be encoded by either a bicistronic transcript including sequence from the upstream membrane frizzled-related protein gene (MFRP), or by a monocistronic transcript expressed from an internal promoter. [provided by RefSeq, Jun 2013]

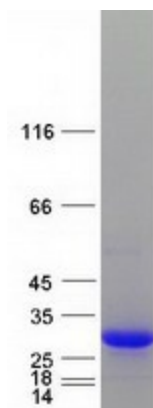
Product images:



Circular map for RC205968



Western blot validation of overexpression lysate (Cat# [LY414426]) using anti-DDK antibody (Cat# [TA50011-100]). Left: Cell lysates from untransfected HEK293T cells; Right: Cell lysates from HEK293T cells transfected with RC205968 using transfection reagent MegaTran 2.0 (Cat# [TT210002]).



Coomassie blue staining of purified C1QTNF5 protein (Cat# [TP305968]). The protein was produced from HEK293T cells transfected with C1QTNF5 cDNA clone (Cat# RC205968) using MegaTran 2.0 (Cat# [TT210002]).