

Product datasheet for **RC205966**

ARL6 (NM_032146) Human Tagged ORF Clone

Product data:

Product Type: Expression Plasmids
Product Name: ARL6 (NM_032146) Human Tagged ORF Clone
Tag: Myc-DDK
Symbol: ARL6
Synonyms: BBS3; RP55
Mammalian Cell Selection: Neomycin
Vector: pCMV6-Entry (PS100001)
E. coli Selection: Kanamycin (25 ug/mL)
ORF Nucleotide Sequence: >RC205966 ORF sequence
Red=Cloning site Blue=ORF Green=Tags(s)

TTTTGTAATACGACTCACTATAGGGCGGCCGGAATTCGTCGACTGGATCCGGTACCGAGGAGATCTGCC
GCC**CGATCGCC**

ATGGGATTGCTAGACAGACTTTTCAGTCTTGCTTGGCCTGAAGAAGAAGGAGGTTTCATGTTTTGTCCTTG
GGCTAGATAATAGTGGCAAACGACGATCATAACAACTTAAACCTTCAAATGCTCAATCTCAAATAT
CCTTCCAACAATAGGATTCAGCATAGAGAAATCAAATCATCCAGTTTGCATTTACAGTGTGGACATG
TCAGGTCAAGGAAGATACAGAAATCTCTGGAACTACTTATAAAGAAGGCAAGCTATTATTTTGTCA
TTGATAGTAGTAGATTAAGAATGGTTGTGGCCAAAGAAGAACTCGATACTCTCTGAATCATCCAGA
TATTAAACACCGTCGAATCCAATCTTATCTTTGCAAATAAAATGGATCTTAGAGATGCAGTGACATCT
GTAAAAGTGTCTCAGTTGCTGTGTTAGAGAACATCAAAGATAAACCCCTGGCATATTTGTCTAGTGATG
CCATAAAGGAGAAGGCTTGCAAGAAGGTGTAGACTGGCTTCAAGATCAGATCCAGACTGTGAAGACA

ACGCGTACGCGGCCGCTCGAGCAGAACTCATCTCAGAAGAGGATCTGGCAGCAAATGATATCCTGGATT
ACAAGGATGACGACGATAAGGTTTAA

Protein Sequence: >RC205966 protein sequence
Red=Cloning site Green=Tags(s)

MGLLDRLSVLLGLKKKEVHVLCLGLDNSGKTTIINKLKPSNAQSQNILPTIGFSIEKFKSSSLSFTVFD
SGQGRYRNLWEHYKQAIIFVIDSSDRLRMVVAKEELDTLLNHPDIKHRRIPILFFANKMDLRDAVTS
VKVSQLCLENIKDKPWHICASDAIKGEGLEQEGVDWLQDQIQTVKT

TRTRPLEQKLISEEDLAANDILDYKDDDDKV

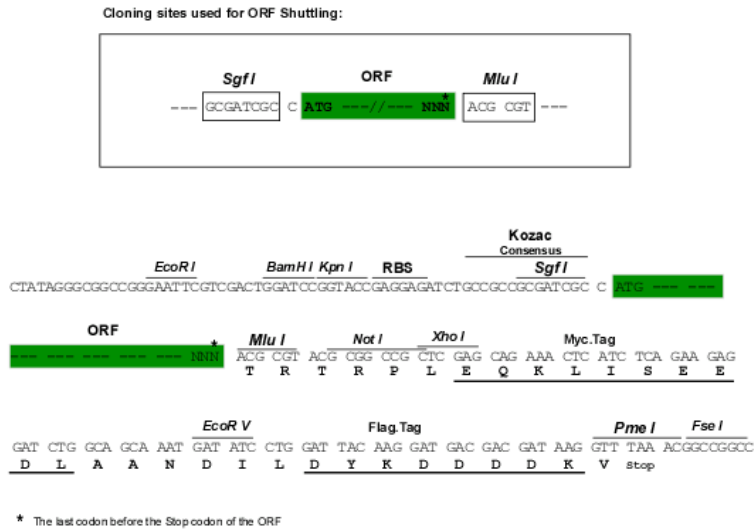
Chromatograms: https://cdn.origene.com/chromatograms/mk6318_f03.zip



[View online »](#)

Restriction Sites: SgfI-MluI

Cloning Scheme:



ACCN: NM_032146

ORF Size: 558 bp

OTI Disclaimer: The molecular sequence of this clone aligns with the gene accession number as a point of reference only. However, individual transcript sequences of the same gene can differ through naturally occurring variations (e.g. polymorphisms), each with its own valid existence. This clone is substantially in agreement with the reference, but a complete review of all prevailing variants is recommended prior to use. [More info](#)

OTI Annotation: This clone was engineered to express the complete ORF with an expression tag. Expression varies depending on the nature of the gene.

Components: The ORF clone is ion-exchange column purified and shipped in a 2D barcoded Matrix tube containing 10ug of transfection-ready, dried plasmid DNA (reconstitute with 100 ul of water).

Reconstitution Method:

1. Centrifuge at 5,000xg for 5min.
2. Carefully open the tube and add 100ul of sterile water to dissolve the DNA.
3. Close the tube and incubate for 10 minutes at room temperature.
4. Briefly vortex the tube and then do a quick spin (less than 5000xg) to concentrate the liquid at the bottom.
5. Store the suspended plasmid at -20°C. The DNA is stable for at least one year from date of shipping when stored at -20°C.

RefSeq: [NM_032146.5](#)

RefSeq Size: 1630 bp

RefSeq ORF: 561 bp

Locus ID: 84100

UniProt ID: [Q9H0F7](#)

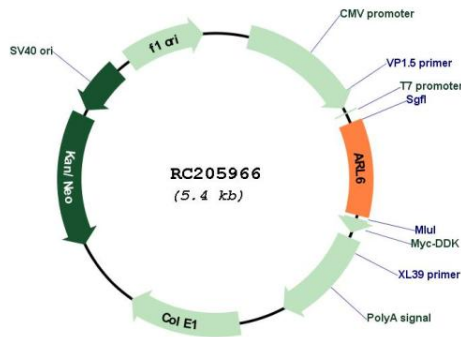
Cytogenetics: 3q11.2

Domains: SAR, ARF, arf

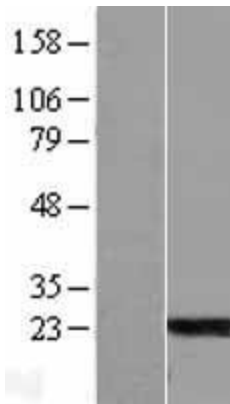
MW: 21.1 kDa

Gene Summary: The protein encoded by this gene belongs to the ARF-like (ADP ribosylation factor-like) sub-family of the ARF family of GTP-binding proteins which are involved in regulation of intracellular traffic. Mutations in this gene are associated with Bardet-Biedl syndrome (BBS). A vision-specific transcript, encoding long isoform BBS3L, has been described (PMID: 20333246). [provided by RefSeq, Apr 2016]

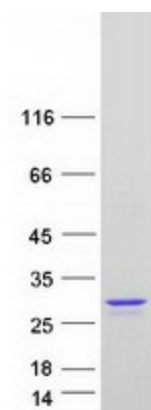
Product images:



Circular map for RC205966



Western blot validation of overexpression lysate (Cat# [LY406068]) using anti-DDK antibody (Cat# [TA50011-100]). Left: Cell lysates from untransfected HEK293T cells; Right: Cell lysates from HEK293T cells transfected with [RC213584] using transfection reagent MegaTran 2.0 (Cat# [TT210002]).



Coomassie blue staining of purified ARL6 protein (Cat# [TP305966]). The protein was produced from HEK293T cells transfected with ARL6 cDNA clone (Cat# RC205966) using MegaTran 2.0 (Cat# [TT210002]).