

Product datasheet for **RC205959**

SMRP1 (C9orf24) (NM_032596) Human Tagged ORF Clone

Product data:

Product Type:	Expression Plasmids
Product Name:	SMRP1 (C9orf24) (NM_032596) Human Tagged ORF Clone
Tag:	Myc-DDK
Symbol:	SMRP1
Synonyms:	bA573M23.4; CBE1; NYD-SP22; SMRP1
Mammalian Cell Selection:	Neomycin
Vector:	pCMV6-Entry (PS100001)
E. coli Selection:	Kanamycin (25 ug/mL)
ORF Nucleotide Sequence:	>RC205959 ORF sequence Red=Cloning site Blue=ORF Green=Tags(s)

TTTTGTAATACGACTCACTATAGGGCGGCCGGAATTCGTCGACTGGATCCGGTACCGAGGAGATCTGCC
GCC**CGGATCGCC**

ATGTTCTGTTCTCCCGTAAGACCAGGACCCCTATCAGTACCTACAGTGACTCCTACAGGGCTCCCACCT
CCATCAAGGAGGTCTATAAGGACCCACCCCTGTGTGCCTGGGAAGCCAACAAGTTTCTGACTCCGGGTCT
GACTCATACCATGGAGCGACATGTGGATCCCGAAGCCCTGCAGAAGATGGCCAAATGTGCTGTACAGGAC
TACACTTATAGGGGTCCATATCAGGCCACCCCTACTTGCCTGAGAAGTACTGGCTTTCTCAAGAGGAAG
CAGACAAATGCAGCCAAACTACCTGGGCAGTGACTGGTACAACACATGGAGGATGGAACCTTACAACAG
CAGCTGCTGCAACAAGTATACCACCTACCTTCCTCGGCTGCCTAAGGAGGCCAGGATGGAGACAGCAGTT
CGAGGAATGCCCTTGAATGCCCTCCTAGGCCGGAGCGGCTCAATGCCTACGAGCGCGAAGTGATGGTGA
ACATGCTGAACCTACTGTGCGGAACCAGCAGCTGCCGCGGATCACGCCCGATGCGGGTGCGTGGACCC
GCTGCCCGGCCGCTGCCCTTCCATGGTTACGAAAGTGCTTGCTCGGGCCGCCACTACTGTCTGCGCGGG
ATGGACTACTACGCCAGCGGGCGCCCTGCACCGACCGCCGCTGCGGCCTTGGTGCCGGGAGCAACAGA
CTATGTGTACCTCCCTACGAGCACCGGCCCGGAATGCAGTGTGCTGTTACAACCTCCCCGCCGTCATACT
ACCCATATCCGAACCT

ACGCGTACGCGGCCGCTCGAGCAGAAACTCATCTCAGAAGAGGATCTGGCAGCAAATGATATCCTGGATT
ACAAGGATGACGACGATAAGGTTTAA



Protein Sequence: >RC205959 protein sequence
Red=Cloning site Green=Tags(s)

MFLFSRKTRTPISTYSDSYRAPTSIKEVYKDPPLCAWEANKFLTPGLTHTMERHVDPEALQKMAKCAVQD
 YTYRGSISGHPYLPEKYWLSQEEADKCSPNYLGSDWYNTWRMEPYNSSCCNKYTTYLPRLPKEARMETAV
 RGMPLCPRRPERLNAYEREVMVNMLNSLSRNQQLPRITPRCGCVDPLPGRLPFHGYESACSGRHYCLRG
 MDYYASGAPCTDRRLRPWCREQQTMCTSLRAPARNAVCCYNSPA VILPISEP

TRTRPLEQKLISEEDLAANDILDYKDDDDKV

Chromatograms: https://cdn.origene.com/chromatograms/mk6320_g04.zip

Restriction Sites: SgfI-MluI

Cloning Scheme:

Cloning sites used for ORF Shuttling:



* The last codon before the Stop codon of the ORF

ACCN: NM_032596

ORF Size: 786 bp

OTI Disclaimer: The molecular sequence of this clone aligns with the gene accession number as a point of reference only. However, individual transcript sequences of the same gene can differ through naturally occurring variations (e.g. polymorphisms), each with its own valid existence. This clone is substantially in agreement with the reference, but a complete review of all prevailing variants is recommended prior to use. [More info](#)

OTI Annotation: This clone was engineered to express the complete ORF with an expression tag. Expression varies depending on the nature of the gene.

Components: The ORF clone is ion-exchange column purified and shipped in a 2D barcoded Matrix tube containing 10ug of transfection-ready, dried plasmid DNA (reconstitute with 100 ul of water).

Reconstitution Method:

1. Centrifuge at 5,000xg for 5min.
2. Carefully open the tube and add 100ul of sterile water to dissolve the DNA.
3. Close the tube and incubate for 10 minutes at room temperature.
4. Briefly vortex the tube and then do a quick spin (less than 5000xg) to concentrate the liquid at the bottom.
5. Store the suspended plasmid at -20°C. The DNA is stable for at least one year from date of shipping when stored at -20°C.

RefSeq: [NM_032596.4](#)

RefSeq Size: 1184 bp

RefSeq ORF: 789 bp

Locus ID: 84688

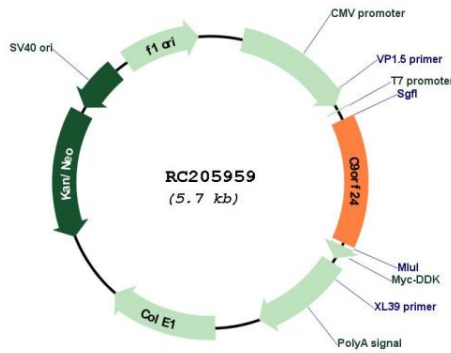
UniProt ID: [Q8NCR6](#)

Cytogenetics: 9p13.3

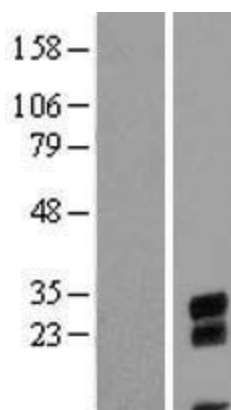
MW: 30.2 kDa

Gene Summary: This gene encodes a nuclear- or perinuclear-localized protein with no predicted domains or similarity to other known proteins. Expression of this gene is induced during the differentiation of bronchial epithelial cells, and the encoded protein may play a role in ciliogenesis. Alternatively spliced transcript variants encoding multiple isoforms have been observed for this gene. [provided by RefSeq, Nov 2011]

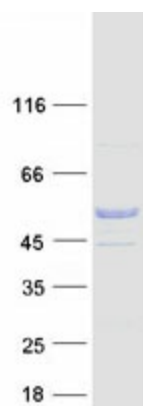
Product images:



Circular map for RC205959



Western blot validation of overexpression lysate (Cat# [LY410011]) using anti-DDK antibody (Cat# [TA50011-100]). Left: Cell lysates from untransfected HEK293T cells; Right: Cell lysates from HEK293T cells transfected with RC205959 using transfection reagent MegaTran 2.0 (Cat# [TT210002]).



Coomassie blue staining of purified C9orf24 protein (Cat# [TP305959]). The protein was produced from HEK293T cells transfected with C9orf24 cDNA clone (Cat# RC205959) using MegaTran 2.0 (Cat# [TT210002]).