

## Product datasheet for RC205953

### CRYZL1 (NM\_145858) Human Tagged ORF Clone

#### Product data:

Product Type:	Expression Plasmids
Product Name:	CRYZL1 (NM_145858) Human Tagged ORF Clone
Tag:	Myc-DDK
Symbol:	CRYZL1
Synonyms:	4P11; QOH-1
Mammalian Cell Selection:	Neomycin
Vector:	pCMV6-Entry (PS100001)
E. coli Selection:	Kanamycin (25 ug/mL)
ORF Nucleotide Sequence:	>RC205953 ORF sequence Red=Cloning site Blue=ORF Green=Tags(s)

TTTTGTAATACGACTCACTATAGGGCGGCCGGAATTCGTCGACTGGATCCGGTACCGAGGAGATCTGCC  
GCC**CGATCGCC**

ATGAAAGGCTTATATTTCCAACAGAGTCCACAGATGAAGAAATAACATTTGTATTTCAAGAAAAGGAAG  
ATCTTCTGTACAGAGGATAACTTTGTGAACTTCAAGTTAAAGCTTGTGCTCTGAGCCAGATAAATAC  
AAAGCTTCTGGCAGAAATGAAGATGAAAAGGATTTATTTCTGTGGGAGAGAAATGCTGGAATTGTA  
TTAGATGTTGGAAGCAAGGTATCATTCTTTCAACCAGATGATGAAGTAGTTGGAATTTGCCCTGGACT  
CTGAAGACCCTGGACTTTGTGAAGTTGTTAGAGTACATGAGCATTACTTGGTTCATAAACAGAAAAGGT  
CACATGGACGGAAGCAGCAGGAAGCATTGGGATGGAGTGGTGCCTATACAGCTCTGCATTATCTTTCT  
CATCTCTCTCTGAAAAATCAGTCTGATAATGGATGGAGCAAGTGCATTTGGTACAATAGCTATTCAGT  
TAGCACATCATAGAGGAGCCAAAGTGATTTCAACAGCATGCAGCCTTGAAGATAAGCAGTGCCTTGAAG  
ATTCAGACCTCCCATAGCCCGAGTGATTGATGTATCTAATGGGAAAGTTCATGTTGCTGAAAGCTGTTTG  
GAAGAAACAGGTGGCCTGGGAGTAGATATTGCTTAGATGCTGGAGTGAGATTATAGTAAAGATGATG  
AACCAGCTGTAAAACATACTACTACCACATAAATCATGATATCATCACACTTCTTGGTGTGGAGGCCA  
CTGGGTAACAACAGAAGAAAACCTTCAGTTGGATCCTCCAGATAGCCACTGCCTTTTCTCAAGGGAGCA  
ACGTTAGCTTTCTGAATGATGAAGTTTGAATTTGTCAAATGTACAACAGGGAAAATATCTTTGTATCT  
TAAAGGATGTGATGGAGAAGTTATCAACTGGTGTTCAGACCTCAGTTGGATGAACCCATTCCACTGTA  
TGAGGCAAAAGTTTCATGGAAGCTGTTCAAGAAAATCAAGGAAGAAAAAGCAAGTTGTTCAATTT

**ACGCGT**ACGCGGCCGCTCGAGCAGAACTCATCTCAGAAGAGGATCTGGCAGCAATGATATCCTGGATT  
ACAAGGATGACGACGATAAGGTTTAA



[View online »](#)

**Protein Sequence:** >RC205953 protein sequence  
Red=Cloning site Green=Tags(s)

MKGLYFQQSSTDEEITVFVQEKEDLPVTEDNFVKLQVKACALSQINTKLLAEMKMKDLFPVGREIAGIV  
 LDVGSKVSFFQPDDDEVGILPLDSEDPGLCEVVRVHEHYLVHKPEKVTWTEAAGSIRDGVRAYTALHYLS  
 HLSPGKSVLIMDGASAFGTIAIQLAHHRGAKVISTACSLQKQCLERFRPPIARVIDVSNQKVHVAESCL  
 EETGGGLGVDIVLDAGVRLYSKDDEPAVKLQLLPHKHDIITLLGVGGHWVTTTEENLQLDPPDSHCLFLKGA  
 TLAFLNDEVWNL SNVQQGKYLCLIKDVMKELSTGVFRPQLDEIPLYEAKVSM EAVQKNQGRKKQVVQF

TRTRPLEQKLISEEDLAANDILDYKDDDDKV

**Chromatograms:** [https://cdn.origene.com/chromatograms/mk6320\\_d08.zip](https://cdn.origene.com/chromatograms/mk6320_d08.zip)

**Restriction Sites:** SgfI-MluI

**Cloning Scheme:**

Cloning sites used for ORF Shuttling:



\* The last codon before the Stop codon of the ORF

**ACCN:** NM\_145858

**ORF Size:** 1047 bp

**OTI Disclaimer:** The molecular sequence of this clone aligns with the gene accession number as a point of reference only. However, individual transcript sequences of the same gene can differ through naturally occurring variations (e.g. polymorphisms), each with its own valid existence. This clone is substantially in agreement with the reference, but a complete review of all prevailing variants is recommended prior to use. [More info](#)

**OTI Annotation:** This clone was engineered to express the complete ORF with an expression tag. Expression varies depending on the nature of the gene.

**Components:** The ORF clone is ion-exchange column purified and shipped in a 2D barcoded Matrix tube containing 10ug of transfection-ready, dried plasmid DNA (reconstitute with 100 ul of water).

**Reconstitution Method:**

1. Centrifuge at 5,000xg for 5min.
2. Carefully open the tube and add 100ul of sterile water to dissolve the DNA.
3. Close the tube and incubate for 10 minutes at room temperature.
4. Briefly vortex the tube and then do a quick spin (less than 5000xg) to concentrate the liquid at the bottom.
5. Store the suspended plasmid at -20°C. The DNA is stable for at least one year from date of shipping when stored at -20°C.

**RefSeq:** [NM\\_145858.3](#)

**RefSeq Size:** 1726 bp

**RefSeq ORF:** 1050 bp

**Locus ID:** 9946

**UniProt ID:** [O95825](#)

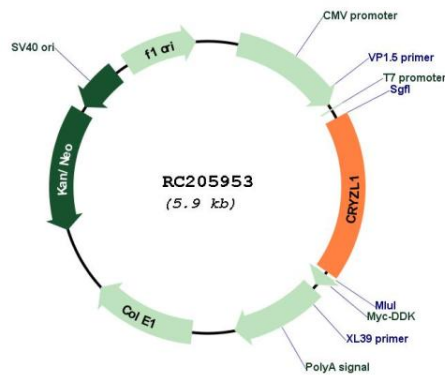
**Cytogenetics:** 21q22.11

**Protein Families:** Druggable Genome

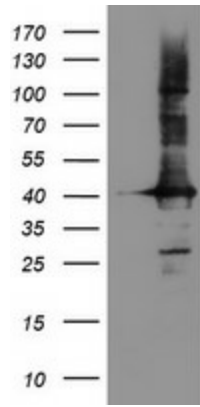
**MW:** 38.7 kDa

**Gene Summary:** This gene encodes a protein that has sequence similarity to zeta crystallin, also known as quinone oxidoreductase. This zeta crystallin-like protein also contains an NAD(P)H binding site. Alternatively spliced transcript variants have been observed but their full-length nature has not been completely determined. [provided by RefSeq, Jul 2008]

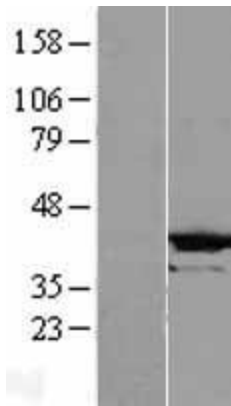
## Product images:



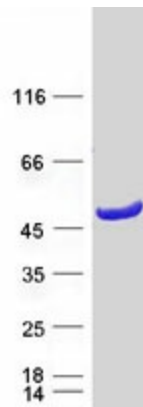
Circular map for RC205953



HEK293T cells were transfected with the pCMV6-ENTRY control (Cat# [PS100001], Left lane) or pCMV6-ENTRY CRYZL1 (Cat# RC205953, Right lane) cDNA for 48 hrs and lysed. Equivalent amounts of cell lysates (5 ug per lane) were separated by SDS-PAGE and immunoblotted with anti-CRYZL1 (Cat# [TA504659]). Positive lysates [LY407853] (100ug) and [LC407853] (20ug) can be purchased separately from OriGene.



Western blot validation of overexpression lysate (Cat# [LY407853]) using anti-DDK antibody (Cat# [TA50011-100]). Left: Cell lysates from untransfected HEK293T cells; Right: Cell lysates from HEK293T cells transfected with RC205953 using transfection reagent MegaTran 2.0 (Cat# [TT210002]).



Coomassie blue staining of purified CRYZL1 protein (Cat# [TP305953]). The protein was produced from HEK293T cells transfected with CRYZL1 cDNA clone (Cat# RC205953) using MegaTran 2.0 (Cat# [TT210002]).