

Product datasheet for **RC205952**

MAP4K5 (NM_198794) Human Tagged ORF Clone

Product data:

Product Type:	Expression Plasmids
Product Name:	MAP4K5 (NM_198794) Human Tagged ORF Clone
Tag:	Myc-DDK
Symbol:	MAP4K5
Synonyms:	GCKR; KHS; KHS1; MAPKKKK5
Mammalian Cell Selection:	Neomycin
Vector:	pCMV6-Entry (PS100001)
E. coli Selection:	Kanamycin (25 ug/mL)



[View online »](#)

ORF Nucleotide Sequence:

>RC205952 ORF sequence
 Red=Cloning site Blue=ORF Green=Tags(s)

TTTTGTAATACGACTCACTATAGGGCGGCCGGGAATTCGTGACTGGATCCGGTACCGAGGAGATCTGCC
 GCC**CGCATCGCC**

ATGGAGGCCCGCTGCGGCCTGCCGCGGACATCCTGAGGCGGAACCCGCAGCAGGACTACGAACTCGTCC
 AGAGGGTCGCGCAGCGGCACCTACGGGGACGTCTATAAGGCCAGAAATGTACACACAGGAGAGCTGGCTGC
 AGTAAAAATCATTAAATTGGAGCCTGGAGATGATTTTTCTTTGATTCAACAAGAAATATTTATGGTTAAA
 GAATGTAAACATTGTAACATCGTTGCCTACTTTGGGAGTTATCTTAGTCGGGAAAAACTATGGATTTGTA
 TGGAACTACTGTGGTGGCGGATCACTTCAAGATATTTACCATGTTACTGGACCATTATCAGAATTGCAAA
 AGCCTATGTATGCAGAGAAACCTTACAGGGTCTTGCCATTTGCATACTAAAGGCAAAATGCATAGAGAT
 ATCAAAGTGCTAATATTTTATTGACAGACCATGGCGATGTAATAATAGCTGACTTTGGTGTGGCTGCAA
 AAATAACAGCTACCATTGCAAAACGAAATCTTTCATTGGCACCCCTTACTGGATGGCCCCAGAAGTTGC
 AGCAGTAGAGAAGAAATGGTGGCTACAACCAACTCTGTGATATCTGGGCAGTAGGAATAACAGCAATTGAA
 CTTGGAGAATTCAGCCACCTATGTTTGATCTCCACCCAATGAGGGCTCTCTTCTTAATGTCAAAAAGTA
 ATTTTCAGCCTCCAAAATAAAGGACAAAAAATAATGGTCATCAACATCCATAATTTGTCAAAAATAGC
 ACTAACAAAAACCCAAAAAAGACCAACTGCTGAAAGACTTCTGACTCACACTTTTGTGCACAGCCA
 GGTCTCTCTAGAGCCCTAGCAGTTGAACTGTTAGACAAAGTGAACAATCCAGATAACCACGCACATTACA
 CTGAAGCAGATGACGATGACTTTGAGCCCCATGCAATCATTCTGCATACCATTAGATCTACAAACAGGAA
 TGCCAGAGCTGAACGGACAGCTTCAAGAAATAAATTTGACAAATTACAATTTGAACCTCCTCTGAGAAAA
 GAAACAGAAGCAGAGATGAAATGGGATTGTCATCAGACCCAAATTTTATGTTACAGTGGAACTCCTTTTG
 TTGATGGTGCAAAATACTGGCAAATCAACCTCAAAACGTGCAATACCACCTCCCCTACCTCCTAAGCCAAG
 GATAAGCAGTTACCCTGAAGACAACCTTCCGGATGAAGAAAAAGCATCAACCATAAAAACATTGTCCTGAT
 TCAGAAAGCAGAGCTCCCAAAATCTCAGAAAGACAGAGTAGCCAAAGTTGTGGCCTGTGGCAGAGACTT
 CTTCTATTGAAAATGGTATGTTTCAAACACTGATGAGTGAATAACAGAAGGATCAGCACAAGCACC
 ACAGTTACCACGAAAAAAGGACAAACGAGACTTCCCTAAACCAGCCATCAATGGCCTTCCACCCACCCCA
 AAAGTTCTGATGGGAGCATGCTTTTCAAAGTTTTTGTGGCTGTCTTTGAAAATTAATGTGCAACAT
 CCTGGATACATCCTGATACAAAAGATCAGTACATTATTTTGGAACTGAAGATGGTATTTACACACTGAA
 TCTCAATGAGCTACATGAGGCAACGATGGAACAGTTATTTCCACGGAAGTACTTGGCTGTATGTTATC
 AATAACTTTAATGTCATTATCAGAAGAAAAACCTTTCAGCTCTACTCTCACAATCTTATAGCTTTGT
 TTGAACATGCCAAAAACAGGATTAGCTGCCATATTCAAACCTCACAGTTTCCAGACCGAATACTACC
 AAGAAAATTCGCTTTAACAAACAAGATTCTGATACAAAAGGCTGCCACAAATGTTGCATAGTCAGAAAC
 CCTTACACGGGACATAAATACCTCTGTGGAGCTTTACAGTCTGGAATGTTTTACTTCAAGTGGTATGAGC
 CAATGCAGAAATTCATGTTGATAAAGCACTTTGATTTTCTTTGCCAAGTCCCTTGAATGTTTTGAAAT
 GCTGGTATACCTGAACAGGAATACCCTATGGTCTGTGTAGCTATTAGCAAAGGCACTGAATCGAATCAG
 GTAGTTCAAGTTGAGACAATCAATTTGAACTCTGCATCTCATGGTTTACAGAAATTTGGTGCAGGCAGCC
 AGCAGTTAGATTCATTCATGTAACACAGTTGGAGAGAGATACCGTTTTAGTGTGTTAGACAAATTTGT
 GAAAATTTGAAATCTACAAGAAAAATTAATCAAGTAAGAAACTGGCCTCTGAGTTAAGTTTTGATTTT
 CGCATTGAATCTGTAGTATGCCTTCAAGACAGTGTGTTGGCTTTCTGGAACATGGGATGCAGGGTAAAA
 GCTTCAAGTCAGATGAGTTACCAGGAGATTTAGATGAAACAAGATTTTCCGCTTATTAGGATCAGA
 CAGGGTTGCTGTTTTGAAAGTAGGCCAACAGAAAATCCTACTGCACACAGCAATCTCTACATCTTGGCT
 GGACATGAAAATAGTTAC

ACGCGTACGCGGCCGCTCGAGCAGAAACTCATCTCAGAAGAGGATCTGGCAGCAATGATATCCTGGATT
 ACAAGGATGACGACGATAAGGTTTAA

Protein Sequence: >RC205952 protein sequence
 Red=Cloning site Green=Tags(s)

```
MEAPLRPAADILRRNPQQDYELVQRVGSGTYGDVYKARNVHTGELAAVKIIKLEPGDDFLSIQQEIFMVK
ECKHCNIVAYFGSYLSREKLWICMEYCGGSLQDIYHVTGPLSELQIAYVCRETLQGLAYLHTKGMHRD
IKGANILLTDHGDVKLADFGVAAKITATIAKRKSFIGTPYWMapeVAAVEKNGGYNQLCDIWAvgITAIE
LGELQPPMFDLHPMRALFLMSKSNFQPPKLDKTKWSSTFHNfVKIALTKNPKKRPTAERLLTHTFVAQP
GLSRALAVELLDKVNNPDNHAYTEADDDDFEPHAIIRHTIRSTNRNARAERTASEINFDKLQFEPPLRK
ETEARDemGLSSDPNfMLQWNPfVDGANTGKSTSKRAIPPLPPKPRISSYPEDNfPDEEKASTIKHCPD
SESRApQILRRQSSPSCGPVAETSSIGNGDGISKLMSENTEGSAQAPQLPRKDKDRDFPKPAINGLPPTP
KVLMGACfSKVfDGCPLKINCATSWIHPDtkDQYIIFGTEDGIYTLNLNELHEATMEQLFPRKCTWLYVI
NNTLMSLSEGKTFQLYSHNLIALFEHAKKpGLAAHIQTHRFPDRILPRKFALTTKIPDTKGCHKCCIVRN
PYTGhKYLcGALQSGIVLLQWYEPmQKfMLIKHDFPLPSPLNfVfEMLVIPEQeYPMVCVAISKGTESNQ
VVQfETINLNSASWfTEIGAGSQQLDsIHVTQLERDTVLVCLDKfVKIVNLQgKlKSSKkLASELSfDF
RIeSVVCLQdSVLAFwKHGMqGKSfKSDEVTQeISDETRVfRLLGSDrVVLESrPTENPTAHSNLYILA
GHENSY
```

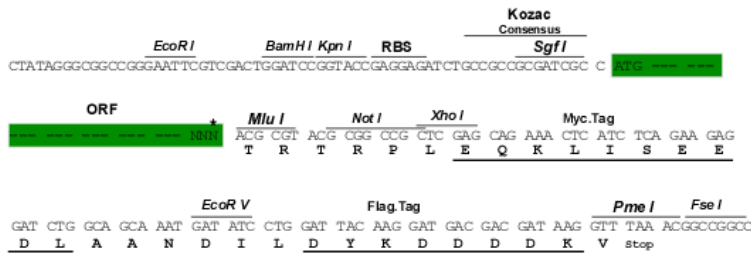
TRTRPLEQKLISEEDLAANDILDYKDDDDKV

Chromatograms: https://cdn.origene.com/chromatograms/mk6533_a04.zip

Restriction Sites: SgfI-MluI

Cloning Scheme:

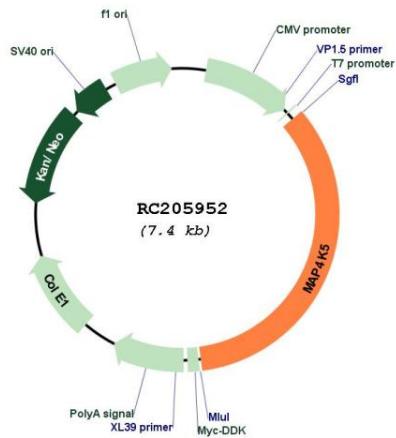
Cloning sites used for ORF Shuttling:



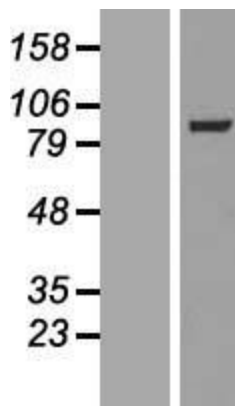
* The last codon before the Stop codon of the ORF

ACCN:	NM_198794
ORF Size:	2538 bp
OTI Disclaimer:	The molecular sequence of this clone aligns with the gene accession number as a point of reference only. However, individual transcript sequences of the same gene can differ through naturally occurring variations (e.g. polymorphisms), each with its own valid existence. This clone is substantially in agreement with the reference, but a complete review of all prevailing variants is recommended prior to use. More info
OTI Annotation:	This clone was engineered to express the complete ORF with an expression tag. Expression varies depending on the nature of the gene.
Components:	The ORF clone is ion-exchange column purified and shipped in a 2D barcoded Matrix tube containing 10ug of transfection-ready, dried plasmid DNA (reconstitute with 100 ul of water).
Reconstitution Method:	<ol style="list-style-type: none">1. Centrifuge at 5,000xg for 5min.2. Carefully open the tube and add 100ul of sterile water to dissolve the DNA.3. Close the tube and incubate for 10 minutes at room temperature.4. Briefly vortex the tube and then do a quick spin (less than 5000xg) to concentrate the liquid at the bottom.5. Store the suspended plasmid at -20°C. The DNA is stable for at least one year from date of shipping when stored at -20°C.
Note:	Plasmids are not sterile. For experiments where strict sterility is required, filtration with 0.22um filter is required.
RefSeq:	NM_198794.3
RefSeq Size:	4435 bp
RefSeq ORF:	2541 bp
Locus ID:	11183
UniProt ID:	Q9Y4K4
Cytogenetics:	14q22.1
Protein Families:	Druggable Genome, Protein Kinase
MW:	95.1 kDa
Gene Summary:	This gene encodes a member of the serine/threonine protein kinase family, that is highly similar to yeast SPS1/STE20 kinase. Yeast SPS1/STE20 functions near the beginning of the MAP kinase signal cascades that is essential for yeast pheromone response. This kinase was shown to activate Jun kinase in mammalian cells, which suggested a role in stress response. Two alternatively spliced transcript variants encoding the same protein have been described for this gene. [provided by RefSeq, Jul 2008]

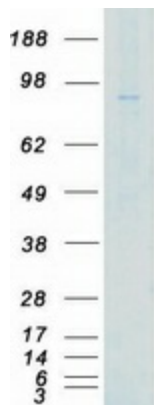
Product images:



Circular map for RC205952



Western blot validation of overexpression lysate (Cat# [LY404793]) using anti-DDK antibody (Cat# [TA50011-100]). Left: Cell lysates from untransfected HEK293T cells; Right: Cell lysates from HEK293T cells transfected with RC205952 using transfection reagent MegaTran 2.0 (Cat# [TT210002]).



Coomassie blue staining of purified MAP4K5 protein (Cat# [TP305952]). The protein was produced from HEK293T cells transfected with MAP4K5 cDNA clone (Cat# RC205952) using MegaTran 2.0 (Cat# [TT210002]).