

Product datasheet for RC205951

FATE1 (NM_033085) Human Tagged ORF Clone

Product data:

Product Type: Expression Plasmids
Product Name: FATE1 (NM_033085) Human Tagged ORF Clone
Tag: Myc-DDK
Symbol: FATE1
Synonyms: CT43; FATE
Mammalian Cell Selection: Neomycin
Vector: pCMV6-Entry (PS100001)
E. coli Selection: Kanamycin (25 ug/mL)
ORF Nucleotide Sequence: >RC205951 ORF sequence
Red=Cloning site Blue=ORF Green=Tags(s)

TTTTGTAATACGACTCACTATAGGGCGGCCGGAATTCGTCGACTGGATCCGGTACCGAGGAGATCTGCC
GCC**CGATCGCC**

ATGGCAGGAGGCCCTCCCAACACCAAGGCGGAGATGGAAATGTCCTGGCAGAAGAACTGAATCATGGAC
GCCAAGGGGAAAACCAAGAGCACCTGGTATAGCAGAAATGATGGAGCTTGGATCTCGGTCCCGGGGTGC
CTCCAGAGAAGCAGAAGTTGGAACAAAAGCTGCTGGCTCTGCTTCCAGCCAAACGAGTTTGAATATG
ACTGCCACCCGACCAAGAAAATGGGGTCCAGCTGCCAAGCCAGAATGCTGAGAGAATCAGGCCATG
GGGATGCCATCTCCAGGAGTACGCTGGCAATTTCCAAGGCATACGTTTCCATTATGATCGCAACCCAGG
GACAGATGCAGTGGCGCAGACTAGCCTGGAAGAGTTCAATGTACTGGAGATGGAAGTCATGAGAAGACAG
CTGTATGCAGTCAACCGCGTCTGCGCGCCCTGGAGGAACAGGGCGCCACCTGGCGCCACAGGGAGACCC
TGATCATCGCCGTGCTGGTGTGGCCAGCATTGCCAACCTGTGGCTGTGGATGAACCCAG

ACGCGTACGCGGCCGCTCGAGCAGAACTCATCTCAGAAGAGGATCTGGCAGCAAATGATATCCTGGATT
ACAAGGATGACGACGATAAGGTTTAA

Protein Sequence: >RC205951 protein sequence
Red=Cloning site Green=Tags(s)

MAGGPPNTKAEMEMSLAEELNHGRQGENQEHLVIAEMMELGSRSRGASQKKQKLEQKAAGSASAKRVWNM
TATRPKMGSQLPKPRLRESGHGDAHLQEYAGNFQIRFHYDRNPGTDAVAQTSLEEFNVLEMEVMRRQ
LYAVNRRRLRALEEQGATWRHRETLIIAVLVSASIANLWLWMNQ

TRTRPLEQKLISEEDLAANDILDYKDDDDKV

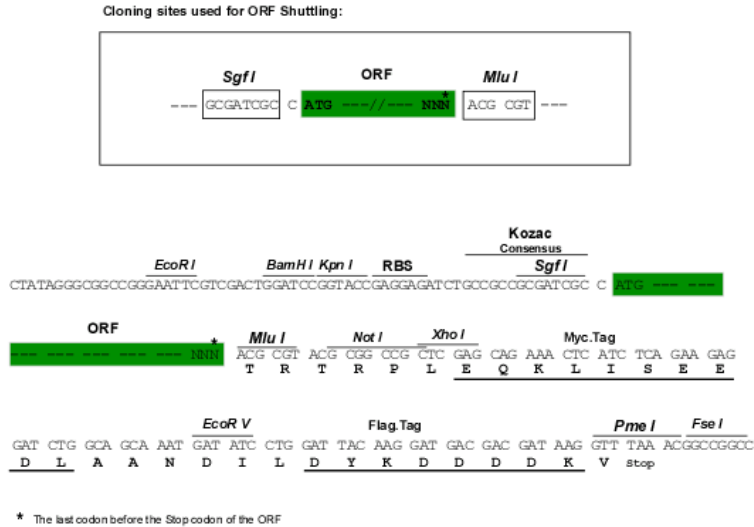
Chromatograms: https://cdn.origene.com/chromatograms/mk6318_c07.zip



[View online »](#)

Restriction Sites: SgfI-MluI

Cloning Scheme:



ACCN: NM_033085

ORF Size: 549 bp

OTI Disclaimer: The molecular sequence of this clone aligns with the gene accession number as a point of reference only. However, individual transcript sequences of the same gene can differ through naturally occurring variations (e.g. polymorphisms), each with its own valid existence. This clone is substantially in agreement with the reference, but a complete review of all prevailing variants is recommended prior to use. [More info](#)

OTI Annotation: This clone was engineered to express the complete ORF with an expression tag. Expression varies depending on the nature of the gene.

Components: The ORF clone is ion-exchange column purified and shipped in a 2D barcoded Matrix tube containing 10ug of transfection-ready, dried plasmid DNA (reconstitute with 100 ul of water).

Reconstitution Method:

1. Centrifuge at 5,000xg for 5min.
2. Carefully open the tube and add 100ul of sterile water to dissolve the DNA.
3. Close the tube and incubate for 10 minutes at room temperature.
4. Briefly vortex the tube and then do a quick spin (less than 5000xg) to concentrate the liquid at the bottom.
5. Store the suspended plasmid at -20°C. The DNA is stable for at least one year from date of shipping when stored at -20°C.

Note: Plasmids are not sterile. For experiments where strict sterility is required, filtration with 0.22um filter is required.

RefSeq: [NM_033085.3](#)

RefSeq Size: 1071 bp

RefSeq ORF: 552 bp

Locus ID: 89885

UniProt ID: [Q969F0](#)

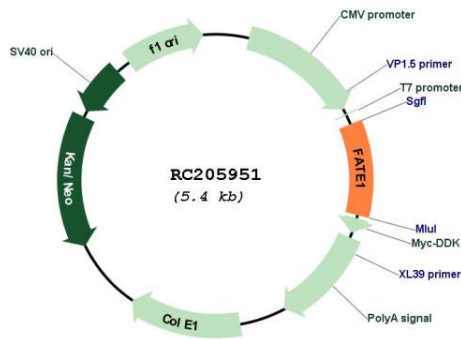
Cytogenetics: Xq28

Protein Families: Transmembrane

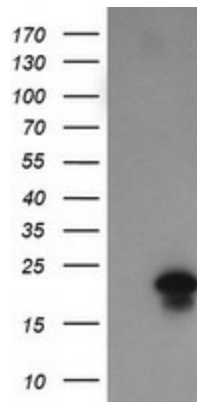
MW: 20.7 kDa

Gene Summary: This gene encodes a cancer-testis antigen that is highly expressed in hepatocellular carcinomas and other tumors and weakly expressed in normal tissues except testis. The protein is strongly expressed in spermatogonia, primary spermatocytes, and Sertoli cells in seminiferous tubules. This protein may have a role in the control of early testicular differentiation and cell proliferation. [provided by RefSeq, Jan 2010]

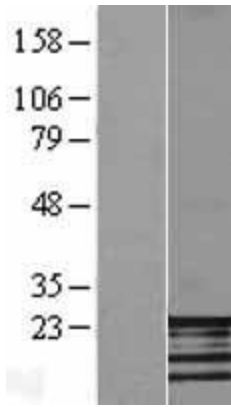
Product images:



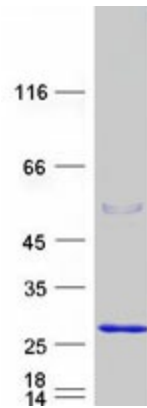
Circular map for RC205951



HEK293T cells were transfected with the pCMV6-ENTRY control (Cat# [PS100001], Left lane) or pCMV6-ENTRY FATE1 (Cat# RC205951, Right lane) cDNA for 48 hrs and lysed. Equivalent amounts of cell lysates (5 ug per lane) were separated by SDS-PAGE and immunoblotted with anti-FATE1 (Cat# [TA505181]). Positive lysates [LY409735] (100ug) and [LC409735] (20ug) can be purchased separately from OriGene.



Western blot validation of overexpression lysate (Cat# [LY409735]) using anti-DDK antibody (Cat# [TA50011-100]). Left: Cell lysates from untransfected HEK293T cells; Right: Cell lysates from HEK293T cells transfected with RC205951 using transfection reagent MegaTran 2.0 (Cat# [TT210002]).



Coomassie blue staining of purified FATE1 protein (Cat# [TP305951]). The protein was produced from HEK293T cells transfected with FATE1 cDNA clone (Cat# RC205951) using MegaTran 2.0 (Cat# [TT210002]).