

Product datasheet for **RC205948**

TRIM37 (NM_001005207) Human Tagged ORF Clone

Product data:

Product Type:	Expression Plasmids
Product Name:	TRIM37 (NM_001005207) Human Tagged ORF Clone
Tag:	Myc-DDK
Symbol:	TRIM37
Synonyms:	MUL; POB1; TEF3
Mammalian Cell Selection:	Neomycin
Vector:	pCMV6-Entry (PS100001)
E. coli Selection:	Kanamycin (25 ug/mL)



[View online »](#)

ORF Nucleotide Sequence:

>RC205948 representing NM_001005207
 Red=Cloning site Blue=ORF Green=Tags(s)

TTTTGTAATACGACTCACTATAGGGCGGCCGGAATTCGTGACTGGATCCGGTACCGAGGAGATCTGCC
 GCC**CGCATCGCC**

ATGGATGAACAGAGCGTGGAGAGCATTGCTGAGGTTTTCCGATGTTTCATTTGTATGGAGAAATTGCGGG
 ATGCACGCCTGTGCTCATTGCTCCAAACTGTGTTGTTTCAGCTGTATTAGGCGCTGGCTGACAGAGCA
 GAGAGCTCAATGTCCTCATTGCCGTGCTCCACTCCAGCTACGAGAAGTAGTAAATGTGCTTGGCAGAA
 GAAGTAACACAACAGCTTGATACTCTCAACTCTGCAGTCTACCAAAACATGAAGAAAATGAAAAGGACA
 AATGTGAAAATCACCATGAAAACCTTAGTGATTTTGTGGGCTTGAAGAAGTGTATCTGCCATCAGTG
 TGCACCTTGGGGAGGAATGCATGGCGGACATACCTTTAAACCTTTGGCAGAAAATTTATGAGCAACACGTC
 ACTAAAGTGAATGAAGAGGTAGCCAAACTTCGTGCGCGTCTCATGGAAGTATCAGCTTAGTTCAAGAAG
 TGGAAAGGAATGTAGAAGCTGAAGAAAATGCAAAAGATGAGCGTGTTCGGGAAAATTAGGAATGCAGTGGA
 GATGATGATTGCACGGTTAGACACACAGCTGAAGAATAAGCTTATAACACTGATGGGTGAGAAGACATCT
 CTAACCCAAGAAAACAGAGCTTTTGAATCCTTACTTCAGGAGGTGGAGCACCAAGTTGCGGCTTGTAGTA
 AGAGTGAGTTGATATCTAAGAGCTCAGAGATCCTTATGATGTTTCAGCAAGTTATCAGGAAAGCCATGGC
 ATCTTTTGTACCCTCTGTTCCACCAGACTTTACCAGTGAATTAGTGCCATCTTACGATTCAGCTACT
 TTTGTTTTAGAGAATTTAGCAGCTTTGCGTCAGAGAGCAGATCCTGTTTACAGTCCACCTCTTCAAGTTT
 CAGGACTTTGCTGGAGGTTAAAAGTTTACCAGATGGAATGGAGTTGTGCGAGGTTACTACTTATCTGT
 GTTCTGGAGCTCTCAGCTGGCTTGCTGAAACTTCTAAATATGAATATCGTGTAGAGATGGTCCACCAG
 TCCTGTAATGATCCTACAAAAAATATCATTGAGAATTTGCATCTGACTTTGAAGTTGGAGAATGCTGGG
 GCTAATAATAGATTTTTCCGTTTGGACTTACTCGCAAATGAAGGATACTTGAATCCACAAAATGATACAGT
 GATTTTAAAGGTTTCAGGTACGTTACCAACTTTTCTTCAAAAATCCCGGACCAAGCATTGGTACATTACT
 CAGCTGGAAGCTGCACAGACTAGTTATATCCAACAAAATAAACAACCTTAAAGAGAGACTTACTATTGAGC
 TGTCTCGAACTCAGAAGTCAAGAGATTTGTACCACCAGATAACCATCTTAGCCCCAAAATGATGATGC
 TCTGGAGACACGAGCTAAGAAGTCTGCATGCTCTGACATGCTTCTCGAAGGTGGTCTACTACAGCTTCT
 GTAAGAGAGGCCAAAGAGGATGAAGAAGATGAGGAGAAGATTGAGAATGAAGATTATCATCAGAGCTTT
 CAGATGGAGATCTGGATCTGGATCTTGTATGAGGATGAAGTAAATCAGCTCGATGGCAGCAGTTCCTC
 TGCTAGTTCACAGCAACAAGTAATACAGAAGAAAATGATATTGATGAAGAACTATGTCTGGAGAAAAT
 GATGTGGAATATAACAACATGGAATTAGAAGAGGGAGAAGTCAAGGAGTGCAGCTGCTGCAGGACCCG
 CAGGTAGTAGCCATGGTTATGTGGGTTCCAGTAGTAGAATATCAAGAAGAACACATTTATGCTCCGCTGC
 TACCAGTAGTTTACTAGACATTGATCCATTAATTTAATACATTTGTTGGACCTTAAAGACCCGGAGCAGT
 ATAGAAAATTTGTGGGGCTTACAGCCTCGCCACCTGCTTCACTTCTGCAGCCCACAGCATCATATTCTC
 GAAAAGATAAAGACCAAAGGAAGCAACAGGCAATGTGGCGAGTGCCCTCTGATTTAAAGATGCTAAAAAG
 ACTCAAACTCAAATGGCCGAAGTTTCGATGTATGAAAACCTGATGTAAAGAATACACTTTCAGAAAATAAA
 AGCAGCAGTGTGCTTCTGGAGACATGCAGACAAGCCTTTTTCTGCTGACCAGGCAGCTCTGGCTGCAT
 GTGGAAGTGAAGACTCTGGCAGATTGCAGGATTTGGGAATGGAAGTCTGGCAAAGTCACTAGTTGCCAA
 TTGTTACATACGAACTCCACAAAATAAGAAGATTAATTCGCCAAGCCAGCTCGATCCAGTGTAGCAGGT
 AGTCTATCACTTCGAAGAGCAGTGGACCTGGAGAAAATAGTCGTTCAAAGGGAGACTGTCAGACTCTGT
 CTGAAGGCTCCCCAGGAAGCTCTCAGTCTGGGAGCAGGCACAGTCTCCCCGAGCCTTGATACATGGCAG
 TATCGGTGATATTCTGCCAAAACCTGAAGACCGCAGTGTAAAGCTTTGGATTGAGTGTGTTGTGGTT
 GCAGTTTTAGTGGCTTGCCTGCGGTTGAGAAAAGGAGGAAAAATGGTACCTTGGGGCTAATGCTAAAG
 GAGGTCATCTGGAAGGACTGCAGATGACTGATTTGAAAATAATTCTGAAACTGGAGAGTTACAGCCTGT
 ACTACCTGAAGGAGCTTACAGTGCCTTGAAGAAGGAATGAGTAGCGACAGTGACATTGAATGTGACACT
 GAGAATGAGGAGCAGGAAGAGCATACCAGTGTGGGCGGGTTTACGACTCCTTCATGGTCATGACACAGC
 CCCCAGATGAAGATACACATTCCAGTTTCTGATGGTGAACAAATAGGCCCTGAAGATCTCAGTTCAA
 TACAGATGAAAATAGTGAAGA

ACGCGTACGCGGCCGCTCGAGCAGAAACTCATCTCAGAAGAGGATCTGGCAGCAAATGATATCCTGGATT
 ACAAGGATGACGACGATAAGGTTTAA

Protein Sequence: >RC205948 representing NM_001005207
 Red=Cloning site Green=Tags(s)

MDEQSVESIAEVFRFCICMEKLRDARLCPHCSKLCFCSCIRRWL TEQRAQCPCRAPLQLREL VNCRWAE
 EVTQQLDTLQLCSLTKHEENEKDKCENHHEKLSVFCWACKKCICHQCALWGMHGGHTFKPLAEIYEQHV
 TKVNEEVAKLRRRLMELISLVQEVERNVEAVRNAKDERVREIRNAVEMMIARLDTQLKNKLITLMGQKTS
 LTQETELLESLLEVEHQLRSCSKSELISKSEILMMFQQVHRKPMASFVTTTPVPDFTSELVPSYDSAT
 FVLENFSTLRQRADPVYSPPLQVSGLCWRLKVYPDGNVVRGYLSVFLELSAGLPETSKYEYRVMVHQ
 SCNDPTKNIIREFASDFEVGECWGYNRFRLDLLANEGYLNPNQDNTVILRFQVRSPTFFQKSRDQHWYIT
 QLEAAQTSYIQQINNLKERLTIELSRTQKSRDLSPDNHLSQNDDALETRAKKSACSDMLLEGGPTTAS
 VREAKEDDEEEDIQNEDYHHELSDGDLDDLVEDEVNQLDGSSSSASSTATSNTTEENDIDEETMSGEN
 DVEYNNMEEGELMEDAAAAGPAGSSHGYYVSSSRISRRTHLCSAATSSLLDIDPLILIHLLDLKDRSS
 IENLWGLQPRPPASLLQPTASYSRKDKDQRKQAMWRVPSDLKMLKRLKTQMAEVRCKMTDKVNTLSEIK
 SSSAASGDMQTSLSADQAALAACGTENSGRLQDLGMELLAKSSVANCYIRNSTNKKSNPKPARSSVAG
 SLSLRRAVDPGENSRKGDQCQLSEGSPGSSQSGSRHSSPRALIHGSIQDILPKTEDRQCKALDSDAVVV
 AVFVSGLPAAVEKRRKMVTLGANAKGGHLEGLQMTDLENNSETGELQPVLPAGASAAPEEGMSSDSDIECDT
 ENEEQEEHTSVGGFHDSFMVMTQPPDETHSSFPDGEQIGPEDLSFNTEENSGR

TRTRPLEQKLISEEDLAANDILDYKDDDDKV

Chromatograms: https://cdn.origene.com/chromatograms/mg2904_b01.zip

Restriction Sites: SgfI-MluI

Cloning Scheme:

Cloning sites used for ORF Shuttling:



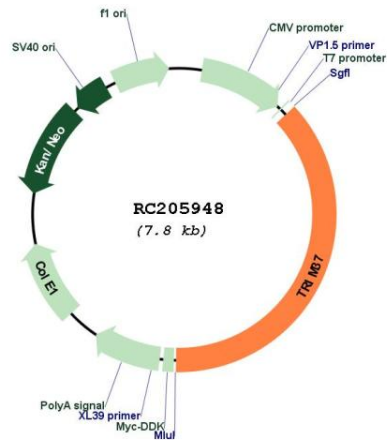
* The last codon before the Stop codon of the ORF

ACCN: NM_001005207

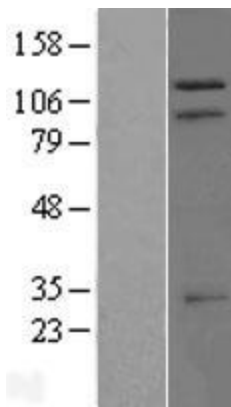
ORF Size: 2892 bp

OTI Disclaimer:	The molecular sequence of this clone aligns with the gene accession number as a point of reference only. However, individual transcript sequences of the same gene can differ through naturally occurring variations (e.g. polymorphisms), each with its own valid existence. This clone is substantially in agreement with the reference, but a complete review of all prevailing variants is recommended prior to use. More info
OTI Annotation:	This clone was engineered to express the complete ORF with an expression tag. Expression varies depending on the nature of the gene.
Components:	The ORF clone is ion-exchange column purified and shipped in a 2D barcoded Matrix tube containing 10ug of transfection-ready, dried plasmid DNA (reconstitute with 100 ul of water).
Reconstitution Method:	<ol style="list-style-type: none"> 1. Centrifuge at 5,000xg for 5min. 2. Carefully open the tube and add 100ul of sterile water to dissolve the DNA. 3. Close the tube and incubate for 10 minutes at room temperature. 4. Briefly vortex the tube and then do a quick spin (less than 5000xg) to concentrate the liquid at the bottom. 5. Store the suspended plasmid at -20°C. The DNA is stable for at least one year from date of shipping when stored at -20°C.
RefSeq:	NM_001005207.5
RefSeq Size:	3588 bp
RefSeq ORF:	2895 bp
Locus ID:	4591
UniProt ID:	O94972
Cytogenetics:	17q22
Protein Families:	Druggable Genome
Protein Pathways:	Ubiquitin mediated proteolysis
MW:	107.7 kDa
Gene Summary:	This gene encodes a member of the tripartite motif (TRIM) family, whose members are involved in diverse cellular functions such as developmental patterning and oncogenesis. The TRIM motif includes zinc-binding domains, a RING finger region, a B-box motif and a coiled-coil domain. The RING finger and B-box domains chelate zinc and might be involved in protein-protein and/or protein-nucleic acid interactions. Mutations in this gene are associated with mulibrey (muscle-liver-brain-eye) nanism, an autosomal recessive disorder that involves several tissues of mesodermal origin. TRIM37 localizes in peroxisomal membranes, and has been implicated in human peroxisomal biogenesis disorders. [provided by RefSeq, Jul 2020]

Product images:



Circular map for RC205948



Western blot validation of overexpression lysate (Cat# [LY414632]) using anti-DDK antibody (Cat# [TA50011-100]). Left: Cell lysates from untransfected HEK293T cells; Right: Cell lysates from HEK293T cells transfected with [RC224302] using transfection reagent MegaTran 2.0 (Cat# [TT210002]).