

Product datasheet for **RC205933**

SMYD3 (NM_022743) Human Tagged ORF Clone

Product data:

Product Type:	Expression Plasmids
Product Name:	SMYD3 (NM_022743) Human Tagged ORF Clone
Tag:	Myc-DDK
Symbol:	SMYD3
Synonyms:	bA74P14.1; KMT3E; ZMYND1; ZNFN3A1
Mammalian Cell Selection:	Neomycin
Vector:	pCMV6-Entry (PS100001)
E. coli Selection:	Kanamycin (25 ug/mL)



[View online »](#)

ORF Nucleotide
Sequence:

>RC205933 ORF sequence
Red=Cloning site Blue=ORF Green=Tags(s)

TTTTGTAATACGACTCACTATAGGGCGGCCGGAATTCGTCGACTGGATCCGGTACCGAGGAGATCTGCC
GCCGCGATCGCC

ATGGAGCCGCTGAAGGTGAAAAAGTTCGAACCGCCAACAGGGGAAACGGGCTGCGCGCCGTGACCCCGC
TGCSCCCCGAGAGCTACTCTCCGCTCGGATCCCTTGGCGTACACGGTGTGCAAGGGGAGTCGTGGCGT
CGTCTGCGACCGCTGCCTTCTCGGGAAGGAAAAGCTGATGCGATGCTCTCAGTCCGCGCTCGCAAATAC
TGTAAGTGTAAAGTGTGAGAAAAAGCTTGGCCAGACCACAAGCGGGAATGCAAAATGCCTTAAAAGCTGCA
AACCCAGATATCCTCCAGACTCCGTTCCGACTTCTTGGCAGAGTTGTCTTCAAATATGGATGGAGCACC
TTCAGAATCAGAGAAGCTTACTCATTTTATGATCTGGAGTCAAATATTAACAACTGACTGAAGATAGG
AAAGAGGGCCTCAGGCAACTCGTAATGACATTTCAACATTTTCATGAGAGAAGAAATACAGGATGCCTCTC
AGCTGCCACCTGCCTTTGACCTTTTGAAGCCTTTGCAAAAAGTGTCTGCAACTCTTCCACCATCTGTAA
TGCGGAGATGCAGGAAGTTGGTGTGGCCTATATCCAGTATCTCTTTGCTCAATCACAGCTGTGACCCC
AACTGTTGCGATTGTGTTCAATGGCCCCACCTTACTGCGAGCAGTCCGAGACATCGAGGTGGGAGAGG
AGCTCACCATCTGCTACCTGGATATGCTGATGACCAGTGAAGGAGCGCCGGAAGCAGCTGAGGGACCAGTA
CTGCTTTGAATGTGACTGTTCCGTTGCCAAACCCAGGACAAGGATGCTGATATGCTAACTGGTGTGAG
CAAGTATGGAAGGAAGTCAAGAATCCCTGAAAAAAATGAAGAACTGAAGGCACACTGGAAGTGGGAGC
AGGTTCTGGCCATGTGCCAGGCGATCATAAGCAGCAATTTCTGAACGGCTTCCCGATCAACATCTACCA
GCTGAAGTGTCTGACTGCGCCATGGATGCCTGCATCAACCTCGGCTGTTGGAGGAAGCCTTGTCTAT
GGTACTCGGACCATGGAGCCATACAGGATTTTTTCCCAGGAAGCCATCCCGTCAGAGGGGTTCAAGTGA
TGAAAGTTGGCAAACCTGCAGCTACATCAAGGCATGTTTCCCAGCAATGAAGAATCTGAGACTGGCTTT
TGATATTATGAGAGTGACACATGCGAGAGAACACAGCCTGATTGAAGATTTGATTCTACTTTTAGAAGAA
TGCAGCGCAACATCAGAGCATCC

ACGCGTACGCGCGCGCTCGAGCAGAACTCATCTCAGAAGAGGATCTGGCAGCAAATGATATCCTGGATT
ACAAGGATGACGACGATAAGGTTTAA

Protein Sequence:

>RC205933 protein sequence
Red=Cloning site Green=Tags(s)

MEPLKVEKFATANRGNLRAVTPLRPGELLFRSDPLAYTVCKGSRGVVCDRCLLGKEKLMRCSQCRVAKY
CSAKCQKAWPDHKRECKCLKSCKPRYPDSVRLGRVVKFLMDGAPSESEKLYSFYDLESNINKLTEDR
KEGLRQLVMTFQHFMRREEIQDASQLPPAFDLFEAFKVICNSFTICNAEMQEVGVLGPSISLLNHSCDP
NCSIVFNPHLLLRAVRDIEVGEELTICYLDMLMTSEERRKQLRDQYCFECDRCQTDQKADMLTGDE
QVWKEVQESLKKIEELKAHWKWEQVLMCQAIISNSERLPDINIYQLKVLDCAMDACINLGLLEALFY
GTRTMOPYRIFFPGSHPVRGVQVMKVGLQLHQGMFPQAMKNLRLAFDIMRVTHGREHSLIEDLILLLEE
CDANIRAS

TRTRPLEQKLISEEDLAANDILDYKDDDDKV

Chromatograms:

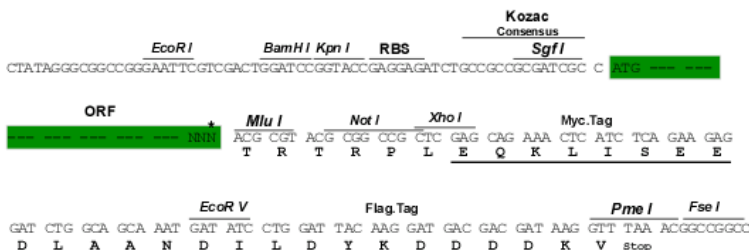
https://cdn.origene.com/chromatograms/mk6034_a10.zip

Restriction Sites:

SgfI-MluI

Cloning Scheme:

Cloning sites used for ORF Shuttling:



* The last codon before the Stop codon of the ORF

ACCN: NM_022743

ORF Size: 1284 bp

OTI Disclaimer: The molecular sequence of this clone aligns with the gene accession number as a point of reference only. However, individual transcript sequences of the same gene can differ through naturally occurring variations (e.g. polymorphisms), each with its own valid existence. This clone is substantially in agreement with the reference, but a complete review of all prevailing variants is recommended prior to use. [More info](#)

OTI Annotation: This clone was engineered to express the complete ORF with an expression tag. Expression varies depending on the nature of the gene.

Components: The ORF clone is ion-exchange column purified and shipped in a 2D barcoded Matrix tube containing 10ug of transfection-ready, dried plasmid DNA (reconstitute with 100 ul of water).

Reconstitution Method:

1. Centrifuge at 5,000xg for 5min.
2. Carefully open the tube and add 100ul of sterile water to dissolve the DNA.
3. Close the tube and incubate for 10 minutes at room temperature.
4. Briefly vortex the tube and then do a quick spin (less than 5000xg) to concentrate the liquid at the bottom.
5. Store the suspended plasmid at -20°C. The DNA is stable for at least one year from date of shipping when stored at -20°C.

RefSeq Size: 1469 bp

RefSeq ORF: 1110 bp

Locus ID: 64754

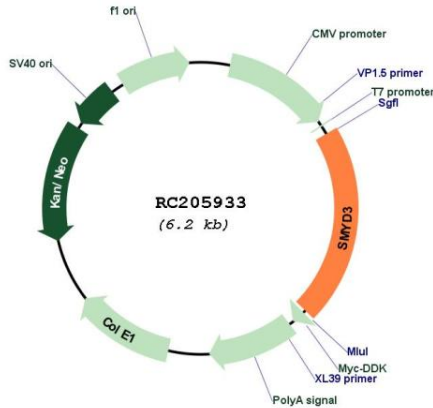
UniProt ID: [Q9H7B4](#)
Cytogenetics: 1q44

Domains: SET, zf-MYND

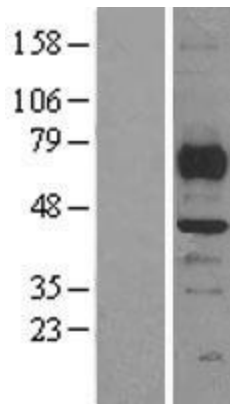
MW: 49.1 kDa

Gene Summary: This gene encodes a histone methyltransferase which functions in RNA polymerase II complexes by an interaction with a specific RNA helicase. Multiple transcript variants encoding different isoforms have been found for this gene. [provided by RefSeq, Dec 2011]

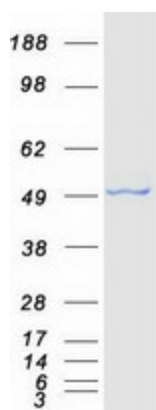
Product images:



Circular map for RC205933



Western blot validation of overexpression lysate (Cat# [LY402935]) using anti-DDK antibody (Cat# [TA50011-100]). Left: Cell lysates from untransfected HEK293T cells; Right: Cell lysates from HEK293T cells transfected with RC205933 using transfection reagent MegaTran 2.0 (Cat# [TT210002]).



Coomassie blue staining of purified SMYD3 protein (Cat# [TP305933]). The protein was produced from HEK293T cells transfected with SMYD3 cDNA clone (Cat# RC205933) using MegaTran 2.0 (Cat# [TT210002]).