

Product datasheet for **RC205931**

MT1F (NM_005949) Human Tagged ORF Clone

Product data:

Product Type: Expression Plasmids
Product Name: MT1F (NM_005949) Human Tagged ORF Clone
Tag: Myc-DDK
Symbol: MT1F
Synonyms: MT1
Mammalian Cell Selection: Neomycin
Vector: pCMV6-Entry (PS100001)
E. coli Selection: Kanamycin (25 ug/mL)
ORF Nucleotide Sequence: >RC205931 ORF sequence
Red=Cloning site Blue=ORF Green=Tags(s)

TTTTGTAATACGACTCACTATAGGGCGGCCGGAATTCGTCGACTGGATCCGGTACCGAGGAGATCTGCC
GCC**CGATCGCC**

ATGGACCCCAACTGCTCCTGCGCCGCTGGTGTCTCCTGCACCTGCGCTGGTTCTGCAAGTGCAAAGAGT
GCAAATGCACCTCCTGCAAGAAGAGCTGCTGCTCCTGCTGCCCGTGGGCTGTAGCAAGTGTGCCCAGGG
CTGTGTTTGCAAAGGGCGTCAGAGAAGTGCAGCTGCTGCGAC

ACGCGTACGCGGCCGCTCGAGCAGAACTCATCTCAGAAGAGGATCTGGCAGCAAATGATATCCTGGATT
ACAAGGATGACGACGATAAGGTTTAA

Protein Sequence: >RC205931 protein sequence
Red=Cloning site Green=Tags(s)

MDPNCSCAAGVSCTCAGSCKCKECKTSCCKSCCSCPVGCSKCAQGCVCKGASEKCSCCD

TRTRPLEQKLISEEDLAANDILDYKDDDDKV

Chromatograms: https://cdn.origene.com/chromatograms/mk6551_a08.zip

Restriction Sites: Sgfl-MluI



[View online »](#)

Cloning Scheme:


ACCN: NM_005949

ORF Size: 183 bp

OTI Disclaimer: The molecular sequence of this clone aligns with the gene accession number as a point of reference only. However, individual transcript sequences of the same gene can differ through naturally occurring variations (e.g. polymorphisms), each with its own valid existence. This clone is substantially in agreement with the reference, but a complete review of all prevailing variants is recommended prior to use. [More info](#)

OTI Annotation: This clone was engineered to express the complete ORF with an expression tag. Expression varies depending on the nature of the gene.

Components: The ORF clone is ion-exchange column purified and shipped in a 2D barcoded Matrix tube containing 10ug of transfection-ready, dried plasmid DNA (reconstitute with 100 ul of water).

Reconstitution Method:

1. Centrifuge at 5,000xg for 5min.
2. Carefully open the tube and add 100ul of sterile water to dissolve the DNA.
3. Close the tube and incubate for 10 minutes at room temperature.
4. Briefly vortex the tube and then do a quick spin (less than 5000xg) to concentrate the liquid at the bottom.
5. Store the suspended plasmid at -20°C. The DNA is stable for at least one year from date of shipping when stored at -20°C.

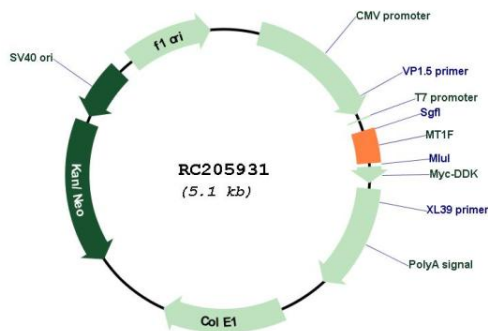
RefSeq: [NM_005949.4](#)

RefSeq Size: 456 bp

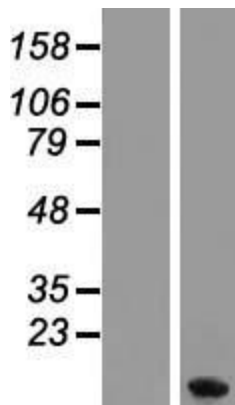
RefSeq ORF: 186 bp

Locus ID: 4494
UniProt ID: [P04733](#)
Cytogenetics: 16q13
MW: 6.1 kDa
Gene Summary: Metallothioneins have a high content of cysteine residues that bind various heavy metals; these proteins are transcriptionally regulated by both heavy metals and glucocorticoids. [UniProtKB/Swiss-Prot Function]

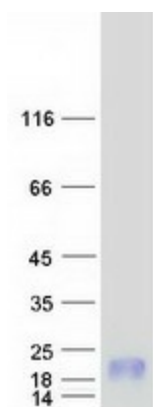
Product images:



Circular map for RC205931



Western blot validation of overexpression lysate (Cat# [LY416965]) using anti-DDK antibody (Cat# [TA50011-100]). Left: Cell lysates from untransfected HEK293T cells; Right: Cell lysates from HEK293T cells transfected with RC205931 using transfection reagent MegaTran 2.0 (Cat# [TT210002]).



Coomassie blue staining of purified MT1F protein (Cat# [TP305931]). The protein was produced from HEK293T cells transfected with MT1F cDNA clone (Cat# RC205931) using MegaTran 2.0 (Cat# [TT210002]).