

Product datasheet for **RC205929**

C11orf17 (AKIP1) (NM_182901) Human Tagged ORF Clone

Product data:

Product Type: Expression Plasmids
Product Name: C11orf17 (AKIP1) (NM_182901) Human Tagged ORF Clone
Tag: Myc-DDK
Symbol: C11orf17
Synonyms: BCA3; C11orf17
Mammalian Cell Selection: Neomycin
Vector: pCMV6-Entry (PS100001)
E. coli Selection: Kanamycin (25 ug/mL)
ORF Nucleotide Sequence: >RC205929 ORF sequence
Red=Cloning site Blue=ORF Green=Tags(s)

TTTTGTAATACGACTCACTATAGGGCGCCGGGAATTCGTCGACTGGATCCGGTACCGAGGAGATCTGCC
GCC**CGATCGCC**

ATGGACAAGTGTGGCGCCGAGCGCTGAATGGGGTGGACCGACGTTCCCTGCAGCGTTCAGCAAGGC
TGGCTCTAGAAGTGTGGAGAGGGCCAAGAGGAGGGCGGTGGACTGGCATGCCCTGGAGCGTCCAAAGG
CTGCATGGGGTCTTGGCCGGGAGGCGCCACCTAGAGAAACAGCCGGCAGCCGGCCCGCAGCGCTT
CTCCGGGAGAGAGAAGAGAGACCCCAACCCTTAGTGCTTCCTCAGAACAATGGCTGAATTCATGG
ACTATACTCAAGTCAGTGTGGAAATATTATTCATCTGTGCCAGAGGAAGGAGGGCAACCCATGTCTA
TCGTTATCACAGAGGCGAGTCGAAGCTGCACATGTGCTTGGACATAGGGAATGGTCAGAGAAAAGACAGA
AAAAGACATCCCTTGGTCTGGAGGCAGCTATCAAATATCAGAGCATGCTCCAGAGGCATCCCAGCCTG
CTGAGAACATCTAAGGACCTCTACATAGAAGTATATCCAGGGACCTATTCTGTCACTGTGGGCTCAA
TGACTTAACCAAGAAGACTCATGTGGTAGCAGTTGATTCTGGACAAGCGTGGACCTGGTCTTCCCTGTG

ACGCGTACGCGGCCGCTCGAGCAGAACTCATCTCAGAAGAGGATCTGGCAGCAATGATATCCTGGATT
ACAAGGATGACGACGATAAGGTTTAA

Protein Sequence: >RC205929 protein sequence
Red=Cloning site Green=Tags(s)

MDNCLAAAALNGVDRSLQRSARLALVLERAKRRAVDWHALERP KGMVGLAREAPHLEKQPAAGPQRV
LPGEREERPPTLSASFRTMAEFMDYTSSQCGKYSSVPEEGGATHVYRYHRGESKLMCLDIGNGQRKDR
KKTSLGPGGSYQISEHAPEASQPAENISKDLYIEVYPGTYSVTVGSNDLTKKTHVAVDSGQSVDLVFPV

TRTRPLEQKLISEEDLAANDILDYKDDDDKV



[View online »](#)

Chromatograms: https://cdn.origene.com/chromatograms/mk6113_f08.zip

Restriction Sites: SgfI-MluI

Cloning Scheme:



ACCN: NM_182901

ORF Size: 630 bp

OTI Disclaimer: The molecular sequence of this clone aligns with the gene accession number as a point of reference only. However, individual transcript sequences of the same gene can differ through naturally occurring variations (e.g. polymorphisms), each with its own valid existence. This clone is substantially in agreement with the reference, but a complete review of all prevailing variants is recommended prior to use. [More info](#)

OTI Annotation: This clone was engineered to express the complete ORF with an expression tag. Expression varies depending on the nature of the gene.

Components: The ORF clone is ion-exchange column purified and shipped in a 2D barcoded Matrix tube containing 10ug of transfection-ready, dried plasmid DNA (reconstitute with 100 ul of water).

Reconstitution Method:

1. Centrifuge at 5,000xg for 5min.
2. Carefully open the tube and add 100ul of sterile water to dissolve the DNA.
3. Close the tube and incubate for 10 minutes at room temperature.
4. Briefly vortex the tube and then do a quick spin (less than 5000xg) to concentrate the liquid at the bottom.
5. Store the suspended plasmid at -20°C. The DNA is stable for at least one year from date of shipping when stored at -20°C.

RefSeq: [NM_182901.3](#), [NP_878904.2](#)

RefSeq Size: 1528 bp

RefSeq ORF: 632 bp

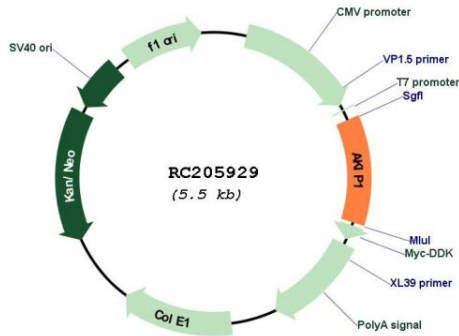
Locus ID: 56672

Cytogenetics: 11p15.4

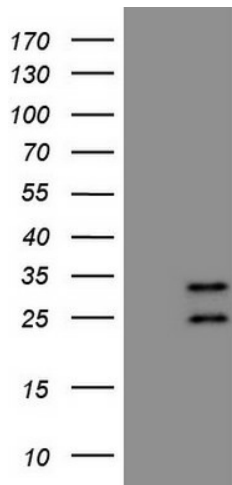
MW: 23.1 kDa

Gene Summary: This gene encodes a nuclear protein that interacts with protein kinase A catalytic subunit, and regulates the effect of the cAMP-dependent protein kinase signaling pathway on the NF-kappa-B activation cascade. Alternatively spliced transcript variants have been described for this gene. [provided by RefSeq, Oct 2011]

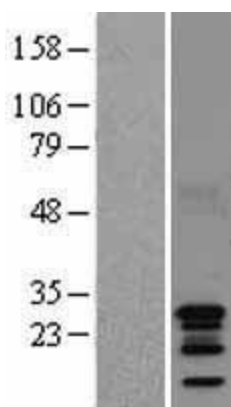
Product images:



Circular map for RC205929



HEK293T cells were transfected with the pCMV6-ENTRY control (Cat# [PS100001], Left lane) or pCMV6-ENTRY AKIP1 (Cat# RC205929, Right lane) cDNA for 48 hrs and lysed. Equivalent amounts of cell lysates (5 ug per lane) were separated by SDS-PAGE and immunoblotted with anti-AKIP1 (Cat# [TA808480])(1:500). Positive lysates [LY405392] (100ug) and [LC405392] (20ug) can be purchased separately from OriGene.



Western blot validation of overexpression lysate (Cat# [LY402797]) using anti-DDK antibody (Cat# [TA50011-100]). Left: Cell lysates from untransfected HEK293T cells; Right: Cell lysates from HEK293T cells transfected with [RC223315] using transfection reagent MegaTran 2.0 (Cat# [TT210002]).