

Product datasheet for RC205928

hCG beta (CGB5) (NM_033043) Human Tagged ORF Clone

Product data:

Product Type: Expression Plasmids
Product Name: hCG beta (CGB5) (NM_033043) Human Tagged ORF Clone
Tag: Myc-DDK
Symbol: hCG beta
Synonyms: CGB; HCG; hCGB
Mammalian Cell Selection: Neomycin
Vector: pCMV6-Entry (PS100001)
E. coli Selection: Kanamycin (25 ug/mL)
ORF Nucleotide Sequence: >RC205928 ORF sequence
 Red=Cloning site Blue=ORF Green=Tags(s)

TTTTGTAATACGACTCACTATAGGGCGGCCGGAATTCGTCGACTGGATCCGGTACCGAGGAGATCTGCC
 GCC**CGATCGCC**

ATGGAGATGTTCCAGGGGCTGCTGCTGTTGCTGCTGCTGAGCATGGGCGGGACATGGGCATCCAAGGAGC
 CGCTTCGGCCACGGTGCCGCCCATCAATGCCACCCTGGCTGTGGAGAAGGAGGGCTGCCCGTGTGCAT
 CACCGTCAACACCACCATCTGTGCCGGCTACTGCCACCACATGACCCGCGTGTGCAGGGGGTCTGCCG
 GCCCTGCCTCAGGTGGTGTGCAACTACCGCATGTGCGCTTCGAGTCCATCCGGTCCCTGGCTGCCCGC
 GCGCGTGAACCCCGTGGTCTCCTACGCGTGGCTCTCAGCTGTCAATGTGCACTCTGCCCGCAGCAC
 CACTGACTGCGGGGGTCCAAGGACCACCCTTGACCTGTGATGACCCCGCTTCCAGGACTCCTCTTCC
 TCAAAGGCCCTCCCCAGCCTTCCAAGTCCATCCCGACTCCCGGGGCCCTCGGACACCCCGATCTCC
 CACAA

ACGCGTACGCGGCCGCTCGAGCAGAACTCATCTCAGAAGAGGATCTGGCAGCAAATGATATCCTGGATT
 ACAAGGATGACGACGATAAGGTTTAA

Protein Sequence: >RC205928 protein sequence
 Red=Cloning site Green=Tags(s)

MEMFQGLLLLLLLSMGGTASKEPLRPRCRPINATLAVEKEGCPVCITVNTTICAGYCPTMTRVLQGVLP
 ALPQVVCNYRDRVFESIRLPGCPRGVNPVVSYAVALSCQCALCRRSTTDCGGPKDHPLTCDPRFQDSSS
 SKAPPPSLPSPSRLPGSDTPILPQ

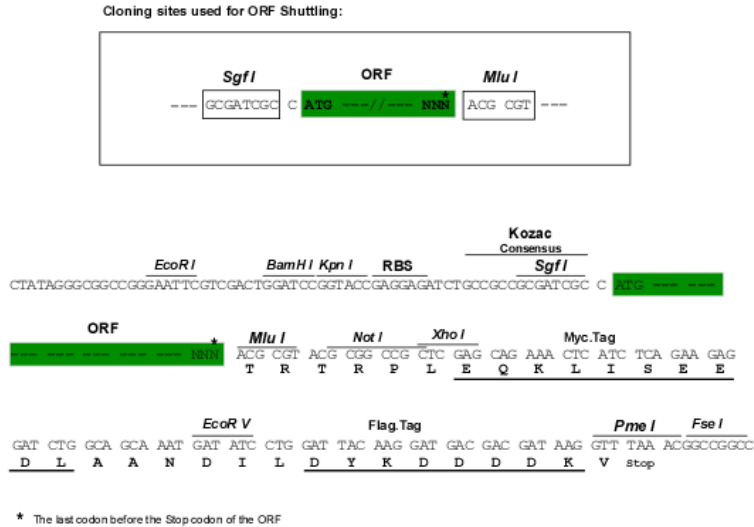
TRTRPLEQKLISEEDLAANDILDYKDDDDKV

Chromatograms: https://cdn.origene.com/chromatograms/mk6069_a03.zip



Restriction Sites: SgfI-MluI

Cloning Scheme:



ACCN: NM_033043

ORF Size: 495 bp

OTI Disclaimer: The molecular sequence of this clone aligns with the gene accession number as a point of reference only. However, individual transcript sequences of the same gene can differ through naturally occurring variations (e.g. polymorphisms), each with its own valid existence. This clone is substantially in agreement with the reference, but a complete review of all prevailing variants is recommended prior to use. [More info](#)

OTI Annotation: This clone was engineered to express the complete ORF with an expression tag. Expression varies depending on the nature of the gene.

Components: The ORF clone is ion-exchange column purified and shipped in a 2D barcoded Matrix tube containing 10ug of transfection-ready, dried plasmid DNA (reconstitute with 100 ul of water).

Reconstitution Method:

1. Centrifuge at 5,000xg for 5min.
2. Carefully open the tube and add 100ul of sterile water to dissolve the DNA.
3. Close the tube and incubate for 10 minutes at room temperature.
4. Briefly vortex the tube and then do a quick spin (less than 5000xg) to concentrate the liquid at the bottom.
5. Store the suspended plasmid at -20°C. The DNA is stable for at least one year from date of shipping when stored at -20°C.

RefSeq: [NM_033043.2](#)

RefSeq Size: 880 bp

RefSeq ORF: 498 bp

Locus ID: 93659

UniProt ID: [P01233](#)

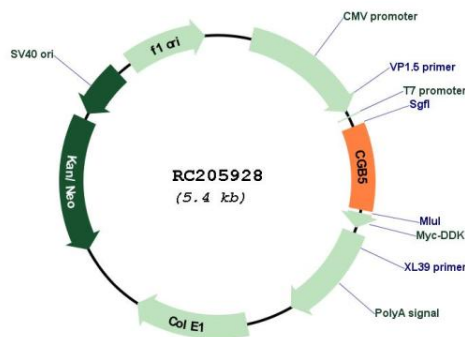
Cytogenetics: 19q13.33

Protein Families: Druggable Genome

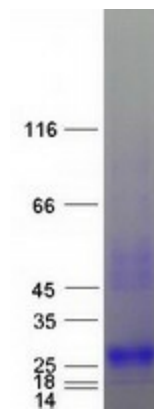
MW: 17.7 kDa

Gene Summary: This gene is a member of the glycoprotein hormone beta chain family and encodes the beta 5 subunit of chorionic gonadotropin (CG). Glycoprotein hormones are heterodimers consisting of a common alpha subunit and an unique beta subunit which confers biological specificity. CG is produced by the trophoblastic cells of the placenta and stimulates the ovaries to synthesize the steroids that are essential for the maintenance of pregnancy. The beta subunit of CG is encoded by 6 genes which are arranged in tandem and inverted pairs on chromosome 19q13.3 and contiguous with the luteinizing hormone beta subunit gene. [provided by RefSeq, Jul 2008]

Product images:



Circular map for RC205928



Coomassie blue staining of purified CGB5 protein (Cat# [TP305928]). The protein was produced from HEK293T cells transfected with CGB5 cDNA clone (Cat# RC205928) using MegaTran 2.0 (Cat# [TT210002]).