

Product datasheet for RC205922L1

MTP18 (MTFP1) (NM_016498) Human Tagged Lenti ORF Clone

Product data:

Product Type:	Expression Plasmids
Product Name:	MTP18 (MTFP1) (NM_016498) Human Tagged Lenti ORF Clone
Tag:	Myc-DDK
Symbol:	MTP18
Synonyms:	HSPC242; MTP18
Mammalian Cell Selection:	None
Vector:	pLenti-C-Myc-DDK (PS100064)
E. coli Selection:	Chloramphenicol (34 ug/mL)
ORF Nucleotide Sequence:	The ORF insert of this clone is exactly the same as(RC205922).
Restriction Sites:	SgfI-MluI
Cloning Scheme:	

Cloning sites used for ORF Shuttling:



* The last codon before the Stop codon of the ORF.

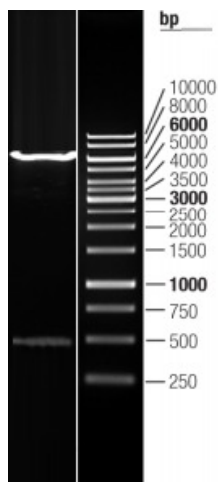
ACCN:	NM_016498
ORF Size:	498 bp



[View online »](#)

OTI Disclaimer:	The molecular sequence of this clone aligns with the gene accession number as a point of reference only. However, individual transcript sequences of the same gene can differ through naturally occurring variations (e.g. polymorphisms), each with its own valid existence. This clone is substantially in agreement with the reference, but a complete review of all prevailing variants is recommended prior to use. More info
OTI Annotation:	This clone was engineered to express the complete ORF with an expression tag. Expression varies depending on the nature of the gene.
Components:	The ORF clone is ion-exchange column purified and shipped in a 2D barcoded Matrix tube containing 10ug of transfection-ready, dried plasmid DNA (reconstitute with 100 ul of water).
Reconstitution Method:	<ol style="list-style-type: none">1. Centrifuge at 5,000xg for 5min.2. Carefully open the tube and add 100ul of sterile water to dissolve the DNA.3. Close the tube and incubate for 10 minutes at room temperature.4. Briefly vortex the tube and then do a quick spin (less than 5000xg) to concentrate the liquid at the bottom.5. Store the suspended plasmid at -20°C. The DNA is stable for at least one year from date of shipping when stored at -20°C.
RefSeq:	NM_016498.3
RefSeq Size:	1298 bp
RefSeq ORF:	501 bp
Locus ID:	51537
UniProt ID:	Q9UDX5
Cytogenetics:	22q12.2
MW:	18 kDa
Gene Summary:	MTP18 is a mitochondrial protein and downstream target of the phosphatidylinositol 3-kinase (see PIK3CA, MIM 171834) signaling pathway that plays a role in cell viability and mitochondrial dynamics (Tondera et al., 2004 [PubMed 15155745]).[supplied by OMIM, Mar 2008]

Product images:



Double digestion of RC205922L1 using SgfI and MluI