

Product datasheet for RC205922

MTP18 (MTFP1) (NM_016498) Human Tagged ORF Clone

Product data:

Product Type: Expression Plasmids
Product Name: MTP18 (MTFP1) (NM_016498) Human Tagged ORF Clone
Tag: Myc-DDK
Symbol: MTP18
Synonyms: HSPC242; MTP18
Mammalian Cell Selection: Neomycin
Vector: pCMV6-Entry (PS100001)
E. coli Selection: Kanamycin (25 ug/mL)
ORF Nucleotide Sequence: >RC205922 ORF sequence
 Red=Cloning site Blue=ORF Green=Tags(s)

TTTTGTAATACGACTCACTATAGGGCGGCCGGAATTCGTCGACTGGATCCGGTACCGAGGAGATCTGCC
 GCC**CGATCGCC**

ATGTCAGAGCCGAGCCGCGGGGCGCAGAGCGGATCTCTACCGGACACGTGGGTGCGATACCTGGGCT
 ATGCCAATGAGGTGGCGAGGCTTCCGCTCTCTGTGCCAGCGCGGTGGTGTGGCTGAGCTATGGCGT
 GGCCAGCTCCTACGTGCTGGCGGATGCCATTGACAAAGGCAAGAAGGCTGGAGAGGTGCCAGCCCTGAA
 GCAGGCCGAGCCAGGGTACCGTGGCTGTGGTGGACACCTTGTATGGCAGGCTCTAGCCTCTGTGG
 CCATTCCGGGCTTCAACATCAACCGGTGTGTGCTGCCTCTCTATGTCCTGGGACTGCCACCCGCTG
 GCCCTGGCTGTCCGCAAGTGGACCACCACCGCCTTGGGCTGTTGACCATCCCCATCATTATCCACCCC
 ATTGACAGGTCGGTGGATTTCTCTGGACTCCAGCCTGCGCAAGCTCTACCCAACAGTGGGAAGCCCA
 GCTCCTCC

ACGCGTACGCGGCCGCTCGAGCAGAACTCATCTCAGAAGAGGATCTGGCAGCAAATGATATCCTGGATT
 ACAAGGATGACGACGATAAGGTTTAA

Protein Sequence: >RC205922 protein sequence
 Red=Cloning site Green=Tags(s)
 MSEPQPRGAERDLYRDTWVRYLGYANEVGEAFRSLVPAAVVWLSYGVASSYVLADAIDKGGKAGEVPSPE
 AGRSARVTAVVDTFVWQALASVAIPGFTINRVCAASLYLGTATRWPLAVRKWTTTALGLLTIPIIIHP
 IDRSVDFLLDSSLRKL YPTVGKPSSS

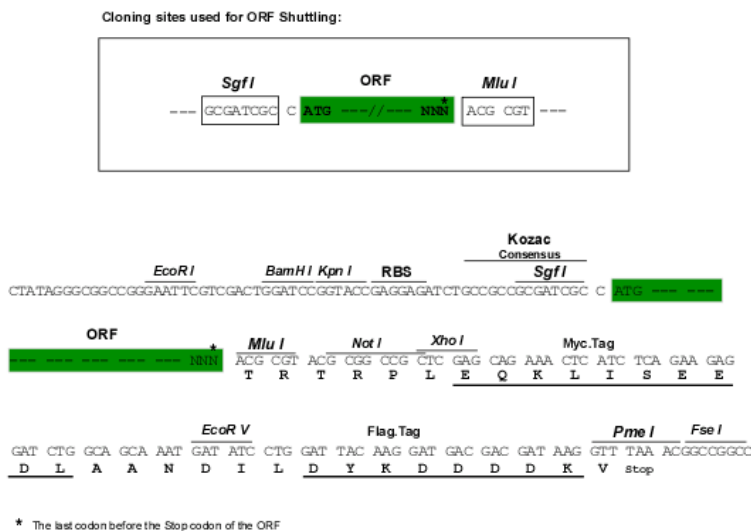
TRTRPLEQKLISEEDLAANDILDYKDDDDKV

Chromatograms: https://cdn.origene.com/chromatograms/mk6070_e04.zip



Restriction Sites: SgfI-MluI

Cloning Scheme:



ACCN: NM_016498

ORF Size: 498 bp

OTI Disclaimer: The molecular sequence of this clone aligns with the gene accession number as a point of reference only. However, individual transcript sequences of the same gene can differ through naturally occurring variations (e.g. polymorphisms), each with its own valid existence. This clone is substantially in agreement with the reference, but a complete review of all prevailing variants is recommended prior to use. [More info](#)

OTI Annotation: This clone was engineered to express the complete ORF with an expression tag. Expression varies depending on the nature of the gene.

Components: The ORF clone is ion-exchange column purified and shipped in a 2D barcoded Matrix tube containing 10ug of transfection-ready, dried plasmid DNA (reconstitute with 100 ul of water).

Reconstitution Method:

1. Centrifuge at 5,000xg for 5min.
2. Carefully open the tube and add 100ul of sterile water to dissolve the DNA.
3. Close the tube and incubate for 10 minutes at room temperature.
4. Briefly vortex the tube and then do a quick spin (less than 5000xg) to concentrate the liquid at the bottom.
5. Store the suspended plasmid at -20°C. The DNA is stable for at least one year from date of shipping when stored at -20°C.

RefSeq: [NM_016498.5](#)

RefSeq Size: 1298 bp

RefSeq ORF: 501 bp

Locus ID: 51537

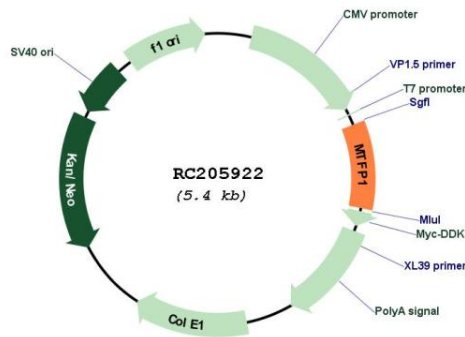
UniProt ID: [Q9UDX5](#)

Cytogenetics: 22q12.2

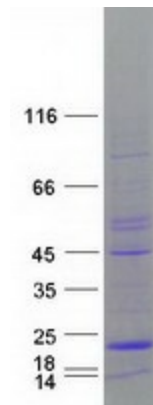
MW: 18 kDa

Gene Summary: MTP18 is a mitochondrial protein and downstream target of the phosphatidylinositol 3-kinase (see PIK3CA, MIM 171834) signaling pathway that plays a role in cell viability and mitochondrial dynamics (Tondera et al., 2004 [PubMed 15155745]).[supplied by OMIM, Mar 2008]

Product images:



Circular map for RC205922



Coomassie blue staining of purified MTFP1 protein (Cat# [TP305922]). The protein was produced from HEK293T cells transfected with MTFP1 cDNA clone (Cat# RC205922) using MegaTran 2.0 (Cat# [TT210002]).