

Product datasheet for RC205916

ST2 (IL1RL1) (NM_003856) Human Tagged ORF Clone

Product data:

Product Type:	Expression Plasmids
Product Name:	ST2 (IL1RL1) (NM_003856) Human Tagged ORF Clone
Tag:	Myc-DDK
Symbol:	ST2
Synonyms:	DER4; FIT-1; IL33R; ST2; ST2L; ST2V; T1
Mammalian Cell Selection:	Neomycin
Vector:	pCMV6-Entry (PS100001)
E. coli Selection:	Kanamycin (25 ug/mL)
ORF Nucleotide Sequence:	>RC205916 ORF sequence Red=Cloning site Blue=ORF Green=Tags(s)

TTTTGTAATACGACTCACTATAGGGCGGCCGGAATTCGTCGACTGGATCCGGTACCGAGGAGATCTGCC
GCC**CGATCGCC**

ATGGGGTTTTGGATCTTAGCAATTCTCACAATTCTCATGTATTCCACAGCAGCAAAGTTTAGTAAACAAT
CATGGGGCTGGAAAATGAGGCTTTAATTGTAAGATGTCCTAGACAAGGAAAACCTAGTTACACCGTGA
TTGGTATTACTCACAACAAACAAAAGTATCCCACTCAGGAAAGAAATCGTGTGTTTGCCTCAGGCCAA
CTTCTGAAGTTTCTACCAGCTGCAGTTGCTGATTCTGGTATTTATACCTGTATTGTCAGAAGTCCCACAT
TCAATAGGACTGGATATGCGAATGTCACCATATATAAAAAACAATCAGATTGCAATGTTCCAGATTATT
GATGTATTCAACAGTATCTGGATCAGAAAAAATTCAAAATTTATTGTCCTACCATTGACCTCTACAAC
TGGACAGCACCTCTTGAGTGGTTAAGAATTGTCAGGCTCTTCAAGGATCAAGGTACAGGGCGCACAAAGT
CATTTTTGGTCATTGATAATGTGATGACTGAGGACGCAGGTGATTACACCTGTAATTTATACACAATGA
AAATGGAGCCAATTATAGTGTGACGGCGACCAGGTCTTCACGGTCAAGGATGAGCAAGGCTTTTCTCTG
TTCCAGTAATCGGAGCCCCTGCACAAAATGAAATAAAGGAAGTGGAAATGGAAAAACGCAAACCTAA
CTTGCTCTGCTTGTGTTTGGAAAAGGCACTCAGTCTTGCTGCGCTCCTGTGGCAGCTTAATGGAACAAA
AATTACAGACTTTGGTGAACCAAGAATTAACAAGAGGAAGGGCAAAATCAAAGTTTCAGCAATGGGCTG
GCTTGTCTAGACATGGTTTTAAGAATAGCTGACGTGAAGGAAGAGGATTTATTGCTGCAGTACGACTGTC
TGGCCCTGAATTTGCATGGCTTGAGAAGGCACACCGTAAGACTAAGTAGGAAAAATCCAAGTAAGGAGTG
TTTC

ACGCGTACGCGGCCGCTCGAGCAGAAACTCATCTCAGAAGAGGATCTGGCAGCAAATGATATCCTGGATT
ACAAGGATGACGACGATAAGGTTTAA



[View online »](#)

Protein Sequence: >RC205916 protein sequence
Red=Cloning site Green=Tags(s)

MGFWILAILTILMYSTAAKFSKQSWGLENEALIVRCPRQGKPSYTVDWYYSQTNKSIPTQERNRVFASGQ
 LLKFLPAAVADSGIYTCIVRSPTFNRTGYANVTIYKKQSDCNVPDYLMYSTVSGSEKNSKIYCPTIDL
 YNWTAPLEWFKNCQALQGSRYRAHKSFLVIDNVMTEDAGDYTCCKFIHNENGANYSVTATRSFTVKDEQGFSL
 FPVIGAPAQNEIKEVEIGKNANLTCACFGKGTQFLAAVLWQLNGTKITDFGEPRIQQEEGQNFQSF
 SNGLACLDMLVLRADVKEEDLLLQYDCLALNLHGLRRHTVRLSRKNPSKECF

TRTRPLEQKLISEEDLAANDILDYKDDDDKV

Chromatograms: https://cdn.origene.com/chromatograms/mk6034_d09.zip

Restriction Sites: SgfI-MluI

Cloning Scheme:

Cloning sites used for ORF Shuttling:



ACCN: NM_003856

ORF Size: 984 bp

OTI Disclaimer: The molecular sequence of this clone aligns with the gene accession number as a point of reference only. However, individual transcript sequences of the same gene can differ through naturally occurring variations (e.g. polymorphisms), each with its own valid existence. This clone is substantially in agreement with the reference, but a complete review of all prevailing variants is recommended prior to use. [More info](#)

OTI Annotation: This clone was engineered to express the complete ORF with an expression tag. Expression varies depending on the nature of the gene.

Components: The ORF clone is ion-exchange column purified and shipped in a 2D barcoded Matrix tube containing 10ug of transfection-ready, dried plasmid DNA (reconstitute with 100 ul of water).

Reconstitution Method:

1. Centrifuge at 5,000xg for 5min.
2. Carefully open the tube and add 100ul of sterile water to dissolve the DNA.
3. Close the tube and incubate for 10 minutes at room temperature.
4. Briefly vortex the tube and then do a quick spin (less than 5000xg) to concentrate the liquid at the bottom.
5. Store the suspended plasmid at -20°C. The DNA is stable for at least one year from date of shipping when stored at -20°C.

RefSeq: [NM_003856.4](#)

RefSeq Size: 3909 bp

RefSeq ORF: 987 bp

Locus ID: 9173

UniProt ID: [Q01638](#)

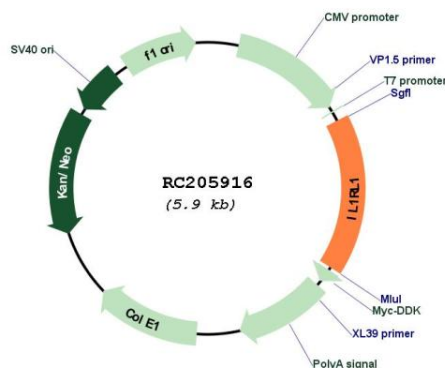
Cytogenetics: 2q12.1

Protein Families: Druggable Genome, Secreted Protein, Transmembrane

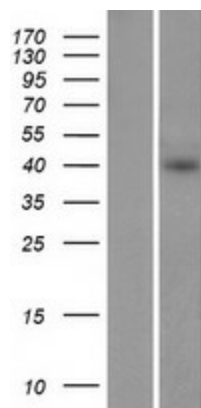
MW: 37 kDa

Gene Summary: The protein encoded by this gene is a member of the interleukin 1 receptor family. Studies of the similar gene in mouse suggested that this receptor can be induced by proinflammatory stimuli, and may be involved in the function of helper T cells. This gene, interleukin 1 receptor, type I (IL1R1), interleukin 1 receptor, type II (IL1R2) and interleukin 1 receptor-like 2 (IL1RL2) form a cytokine receptor gene cluster in a region mapped to chromosome 2q12. Alternative splicing of this gene results in multiple transcript variants. [provided by RefSeq, Jul 2008]

Product images:



Circular map for RC205916



Western blot validation of overexpression lysate (Cat# [LY401271]) using anti-DDK antibody (Cat# [TA50011-100]). Left: Cell lysates from untransfected HEK293T cells; Right: Cell lysates from HEK293T cells transfected with RC205916 using transfection reagent MegaTran 2.0 (Cat# [TT210002]).