

## Product datasheet for RC205908

### CIDE B (CIDEB) (NM\_014430) Human Tagged ORF Clone

#### Product data:

**Product Type:** Expression Plasmids  
**Product Name:** CIDE B (CIDEB) (NM\_014430) Human Tagged ORF Clone  
**Tag:** Myc-DDK  
**Symbol:** CIDE B  
**Mammalian Cell Selection:** Neomycin  
**Vector:** pCMV6-Entry (PS100001)  
**E. coli Selection:** Kanamycin (25 ug/mL)  
**ORF Nucleotide Sequence:** >RC205908 ORF sequence  
 Red=Cloning site Blue=ORF Green=Tags(s)

TTTTGTAATACGACTCACTATAGGGCGGCCGGAATTCGTCGACTGGATCCGGTACCGAGGAGATCTGCC  
 GCC**CGATCGCC**

ATGGAGTACCTCTCAGCTCTGAACCCAGTGACTTACTCAGGTCAGTATCTAATAAAGCTCGGAGTTTG  
 GACGGAGGGTCTGGACCTCAGCTCCACCACCCAGCGACCTTCCGTGTCTGTGATCACAAAGCGGACCAT  
 CCGGAAAGGCCTGACAGCTGCCACCCGCCAGGAGCTGTAGCCAAAGCATTGGAGACCCTACTGCTGAAT  
 GGAGTCTAACCTGGTCTAGAGGAGGATGGAAGTGCAGTGGACAGTGGAGACTTCTCCAGCTGCTGG  
 AGGATGACACGTGCCTGATGGTGTTCAGTCTGGTCAGAGCTGGAGCCCTACAAGGAGTGGAGTGTCTGC  
 ATATGGCCTGGGACGGGAGAGGCCAAGCACAGCAAGGACATCGCCCGATTACCTTTGACGTGTACAAG  
 CAAAACCTCGAGACCTCTTTGGCAGCCTGAATGTCAAAGCCACATTCTACGGGCTCTACTCTATGAGTT  
 GTGACTTTCAAGGACTTGGCCAAAGAAAGTACTCAGGGAGCTCCTTCGTTGGACCTCCACACTGCTGCA  
 AGGCCTGGCCATATGTTGCTGGGAATTCCTCCACCCTCGTCATGCAGTGGAGGGGGCTGAGCAGTGG  
 CAGCAGAAGGGCCGCTCCATTCTAC

**ACGCGT**ACGCGGCCGCTCGAGCAGAAACTCATCTCAGAAGAGGATCTGGCAGCAAATGATATCTGGATT  
 ACAAGGATGACGACGATAAGGTTTAA

**Protein Sequence:** >RC205908 protein sequence  
 Red=Cloning site Green=Tags(s)

MEYLSALNPSDLLRSVSNISSEFGRRVWTSAPPPQRPFRVCDHKRTIRKGLTAATRQELLAKALETLLLN  
 GVLTLVLEEDGTAVDSEDFQLLEDDTCLMVLQSGQSWSPTRSGVLSYGLGRERPKHKSIDIARFTFDVYK  
 QNPRDLFGSLNVKATFYGLYSMSCDFQGLGPKKVLRELLRWTSTLLQGLGHMLLGISSTLRHAVEGAEQW  
 QQKGRHLSY

**TRTRPLEQKLI**SEEDLAANDILDYKDDDDKV



**Chromatograms:** [https://cdn.origene.com/chromatograms/mk6242\\_b05.zip](https://cdn.origene.com/chromatograms/mk6242_b05.zip)

**Restriction Sites:** SgfI-MluI

**Cloning Scheme:**



**ACCN:** NM\_014430

**ORF Size:** 657 bp

**OTI Disclaimer:** The molecular sequence of this clone aligns with the gene accession number as a point of reference only. However, individual transcript sequences of the same gene can differ through naturally occurring variations (e.g. polymorphisms), each with its own valid existence. This clone is substantially in agreement with the reference, but a complete review of all prevailing variants is recommended prior to use. [More info](#)

**OTI Annotation:** This clone was engineered to express the complete ORF with an expression tag. Expression varies depending on the nature of the gene.

**Components:** The ORF clone is ion-exchange column purified and shipped in a 2D barcoded Matrix tube containing 10ug of transfection-ready, dried plasmid DNA (reconstitute with 100 ul of water).

**Reconstitution Method:**

1. Centrifuge at 5,000xg for 5min.
2. Carefully open the tube and add 100ul of sterile water to dissolve the DNA.
3. Close the tube and incubate for 10 minutes at room temperature.
4. Briefly vortex the tube and then do a quick spin (less than 5000xg) to concentrate the liquid at the bottom.
5. Store the suspended plasmid at -20°C. The DNA is stable for at least one year from date of shipping when stored at -20°C.

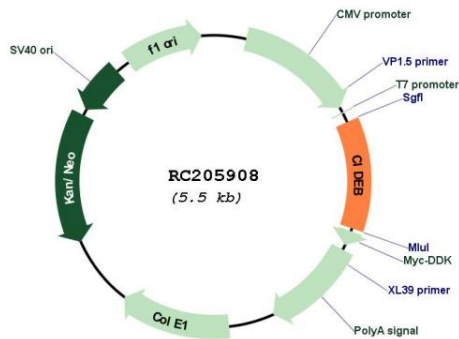
**RefSeq:** [NM\\_014430.3](#)

**RefSeq Size:** 2252 bp

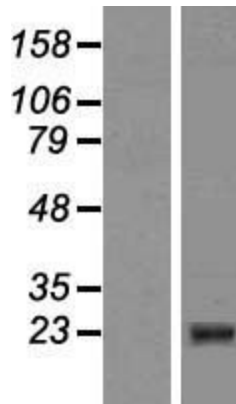
**RefSeq ORF:** 660 bp

**Locus ID:** 27141

**UniProt ID:** [Q9UHD4](#)  
**Cytogenetics:** 14q12  
**Domains:** CAD  
**Protein Families:** Druggable Genome  
**MW:** 24.7 kDa  
**Gene Summary:** Activates apoptosis.[UniProtKB/Swiss-Prot Function]

**Product images:**


Circular map for RC205908



Western blot validation of overexpression lysate (Cat# [LY415279]) using anti-DDK antibody (Cat# [TA50011-100]). Left: Cell lysates from untransfected HEK293T cells; Right: Cell lysates from HEK293T cells transfected with RC205908 using transfection reagent MegaTran 2.0 (Cat# [TT210002]).