

Product datasheet for **RC205907**

RHCG (NM_016321) Human Tagged ORF Clone

Product data:

Product Type:	Expression Plasmids
Product Name:	RHCG (NM_016321) Human Tagged ORF Clone
Tag:	Myc-DDK
Symbol:	RHCG
Synonyms:	C15orf6; PDRC2; RHGK; SLC42A3
Mammalian Cell Selection:	Neomycin
Vector:	pCMV6-Entry (PS100001)
E. coli Selection:	Kanamycin (25 ug/mL)



[View online »](#)

ORF Nucleotide Sequence:

>RC205907 ORF sequence
 Red=Cloning site Blue=ORF Green=Tags(s)

TTTTGTAATACGACTCACTATAGGGCGGCCGGAATTCGTGACTGGATCCGGTACCGAGGAGATCTGCC
 GCC**CGCATCGCC**

ATGGCCTGGAACACCAACCTCCGCTGGCGGCTGCCGCTCACCTGCCTGCTCCTGCAGGTGATTATGGTGA
 TTCCTTCGCGGTGTTTCGTGCGCTACGACTTCGAGGCCGACGCCACTGGTGGTCAGAGAGGACGCACAA
 GAACCTTGAGCGACATGGAGAACGAATTCTACTATCGCTACCCAAGCTTCCAGGACGTGCACGTGATTGGTC
 TTCGTGGGCTTCGGCTTCTCATGACTTTCCTGCAGCGCTACGGCTTCAGCGCCGTGGGCTTCAACTTCC
 TGTGGCAGCCTTCGGCATCCAGTGGGCGCTGCTCATGCAGGGCTGGTCCACTTCTTACAAGACCGCTA
 CATCGTCGTGGGCGTGGAGAACCTCATCAACGCTGACTTCTGCGTGGCCTCTGTCTGCGTGGCCTTTGGG
 GCAGTTCTGGGTAAGTCAGCCCCATTAGCTGCTCATCATGACTTCTTCCAAGTGACCCTCTTCGCTG
 TGAATGAGTTCATTCTCCTAACCTGCTAAAGGTGAAGGATGCAGGAGGCTCCATGACCATCCACACATT
 TGGCGCCTACTTTGGGCTCACAGTGACCCGGATCCTCTACCGACGCAACCTAGAGCAGAGCAAGGAGAGA
 CAGAAATCTGTGTACCAGTCGGACCTCTTTGCCATGATTGGCACCTCTTCTGTGGATGTACTGGCCCA
 GCTTCAACTCAGCCATATCCTACCATGGGGACAGCCAGCACCCGAGCCGCCATCAACACCTACTGCTCCTT
 GGCAGCCTGCGTGCTTACCTCGGTGGCAATATCCAGTGCCTGCACAAGAAGGGCAAGCTGGACATGGTG
 CACATCCAGAATGCCACGCTCGCAGGAGGGGTGGCCGTGGGTACCGCTGCTGAGATGATGCTCATGCCTT
 ACGGTGCCCTCATCATCGGCTTCGTCTGCGGCATCATCTCCACCTGGGTTTTGTATACCTGACCCCAT
 CCTGGAGTCCCGGCTGCACATCCAGGACACATGCGGCATTAACAATCTGCATGGCATTCTGGCATCATA
 GGCGGCATCGTGGTGTGTGACAGCGGCTCCGCCAGCCTTGAAGTCTATGGAAAAGAAGGGCTTGTC
 ATTCTTTGACTTCAAGTTTCAACGGGGACTGGACCGCAAGAACACAGGAAAAGTCCAGATTTATGG
 TCTCTTGGTGACCCTGGCCATGGCCCTGATGGGTGGCATCATTGTGGGGCTCATTTTGGATTACCATTC
 TGGGGACAACCTTCAAGTGAAGTACTGCTTTGAGGATGCGGTCTACTGGGAGATGCCTGAAGGGAACAGCA
 CTGTCTACATCCCTGAGGACCCACCTTCAAGCCCTCAGGACCCTCAGTACCCTCAGTACCATGGTGTCT
 CCCACTACCCATGGCTTCTCGGTACCTTGGTACCC

ACGCGTACGCGGCCGCTCGAGCAGAAACTCATCTCAGAAGAGGATCTGGCAGCAATGATATCCTGGATT
 ACAAGGATGACGACGATAAGGTTTAA

Protein Sequence:

>RC205907 protein sequence
 Red=Cloning site Green=Tags(s)

MAWNTNLRWRLPLTCLLLQVIMVILFGVFRYDFEADAHWWSERTHKNLSDMENEFFYYRYPFQDVHVMV
 FVGFGLMTFLQRYGFSAVGFNLLAAGFIQWALLMQGFHFLQDRYIVGVENLINADFCVASVCVAFG
 AVLKGVSPIQLLIMTFFQVTLFAVNEFILLNLLKVKDAGGSMTIHTFGAYFGLTVTRILYRRNLEQSKER
 QNSVYQSDLFAMIGTLFLWYWPFSNSAISYHGDSQHRAAINTYCSLAACVLTSAVISSALHKKGKLDV
 HIQNATLAGGVAVGTAAEMMLMPYGALIIIGFVCGIISTLGFVYLPFLESRLHIQDTCGINNLHGIPGII
 GGIVGAVTAASASLEVYKGLVHSFDFQGFNGDWTARTQKQFIYGLLVTLAMALMGGIIVGLILRLPF
 WGQPSDENCFEDAVYWEMPEGNSTVYIPEDPTFKPSGSPVSPVPMVSPLPMASSVPLVP

TRTRPLEQKLISEEDLAANDILDYKDDDDKV

Chromatograms:

https://cdn.origene.com/chromatograms/mk6550_b02.zip

Restriction Sites:

Sgfl-MluI

Cloning Scheme:

Cloning sites used for ORF Shutting:



* The last codon before the Stop codon of the ORF

ACCN: NM_016321

ORF Size: 1437 bp

OTI Disclaimer: The molecular sequence of this clone aligns with the gene accession number as a point of reference only. However, individual transcript sequences of the same gene can differ through naturally occurring variations (e.g. polymorphisms), each with its own valid existence. This clone is substantially in agreement with the reference, but a complete review of all prevailing variants is recommended prior to use. [More info](#)

OTI Annotation: This clone was engineered to express the complete ORF with an expression tag. Expression varies depending on the nature of the gene.

Components: The ORF clone is ion-exchange column purified and shipped in a 2D barcoded Matrix tube containing 10ug of transfection-ready, dried plasmid DNA (reconstitute with 100 ul of water).

Reconstitution Method:

1. Centrifuge at 5,000xg for 5min.
2. Carefully open the tube and add 100ul of sterile water to dissolve the DNA.
3. Close the tube and incubate for 10 minutes at room temperature.
4. Briefly vortex the tube and then do a quick spin (less than 5000xg) to concentrate the liquid at the bottom.
5. Store the suspended plasmid at -20°C. The DNA is stable for at least one year from date of shipping when stored at -20°C.

RefSeq: [NM_016321.3](#)
RefSeq Size: 1997 bp

RefSeq ORF: 1440 bp

Locus ID: 51458

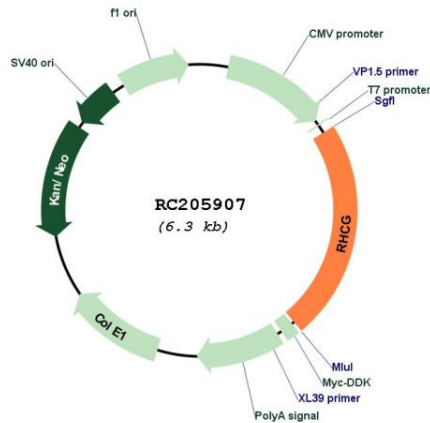
UniProt ID: [Q9UBD6](#)
Cytogenetics: 15q26.1

Protein Families: Transmembrane

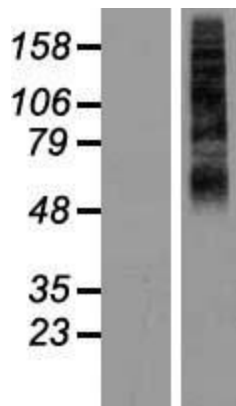
MW: 53.2 kDa

Gene Summary: Functions as an electroneutral and bidirectional ammonium transporter. May regulate transepithelial ammonia secretion.[UniProtKB/Swiss-Prot Function]

Product images:



Circular map for RC205907



Western blot validation of overexpression lysate (Cat# [LY414054]) using anti-DDK antibody (Cat# [TA50011-100]). Left: Cell lysates from untransfected HEK293T cells; Right: Cell lysates from HEK293T cells transfected with RC205907 using transfection reagent MegaTran 2.0 (Cat# [TT210002]).