

Product datasheet for **RC205906**

CLIC5 (NM_016929) Human Tagged ORF Clone

Product data:

Product Type:	Expression Plasmids
Product Name:	CLIC5 (NM_016929) Human Tagged ORF Clone
Tag:	Myc-DDK
Symbol:	CLIC5
Synonyms:	DFNB102; DFNB103; MST130; MSTP130
Mammalian Cell Selection:	Neomycin
Vector:	pCMV6-Entry (PS100001)
E. coli Selection:	Kanamycin (25 ug/mL)
ORF Nucleotide Sequence:	>RC205906 ORF sequence Red=Cloning site Blue=ORF Green=Tags(s)

TTTTGTAATACGACTCACTATAGGGCGGCCGGAATTCGTCGACTGGATCCGGTACCGAGGAGATCTGCC
GCC**CGATCGCC**

ATGACAGACTCGGCGACAGCTAACGGGGACGACAGGGACCCCGAGATCGAGCTCTTTGTGAAGGCTGGAA
TCGATGGAGAAAGCATCGGCAACTGTCTTTCTCTCAGCGCTTTCATGATCCTCTGGCTGAAAGGAGT
CGTGTTCATGTCACCACTGTGGATCTGAAAAGAAAGCCAGCTGACCTGCACAACCTAGCCCCGGCAGC
CACCCGCCCTTCTGACCTTCAACGGGGACGTGAAGACAGACGTCAATAAGATCGAGGAGTTCCTGGAGG
AGACCTTGACCCCTGAAAAGTACCCAAACTGGCTGAAAACACCGGGAATCCAACACAGCGGGCATCGA
CATCTTTTCCAAGTTTTCTGCCTACATCAAAAATACCAAGCAGCAGAACAATGCTGCTCTTGAAAGAGGC
CTAACCAAGGCTCTAAAGAAATTGGATGACTACCTGAACACCCCTCTACCAGAGGAGATTGACGCCAACA
CTTGTGGGAAGACAAGGGGTCCCGCGCAAGTTCCTGGATGGGGATGAGCTGACCTGGCTGACTGCAA
TCTGTTGCCAAGCTCCATGTGGTCAAGATTGTGGCCAAGAAATACCGCAACTATGATATCCCGGCTGAG
ATGACAGGCTGTGGCGGTACCTCAAGAACGCCTATGCCCGTGATGAGTTCACCAACACCTGTGCAGCTG
ACAGTGAGATCGAGTTGGCCTACGCTGATGTGCCAAACGCCTCAGCCGATCC

ACGCGTACGCGGCCGCTCGAGCAGAAACTCATCTCAGAAGAGGATCTGGCAGCAAATGATATCCTGGATT
ACAAGGATGACGACGATAAGGTTTAA



Reconstitution Method:

1. Centrifuge at 5,000xg for 5min.
2. Carefully open the tube and add 100ul of sterile water to dissolve the DNA.
3. Close the tube and incubate for 10 minutes at room temperature.
4. Briefly vortex the tube and then do a quick spin (less than 5000xg) to concentrate the liquid at the bottom.
5. Store the suspended plasmid at -20°C. The DNA is stable for at least one year from date of shipping when stored at -20°C.

RefSeq: [NM_016929.5](#)

RefSeq Size: 5752 bp

RefSeq ORF: 756 bp

Locus ID: 53405

UniProt ID: [Q9NZA1](#)

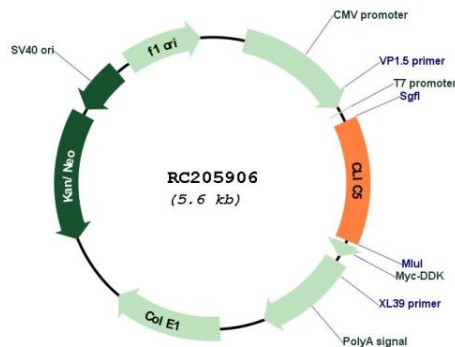
Cytogenetics: 6p21.1

Protein Families: Druggable Genome, Ion Channels: Other

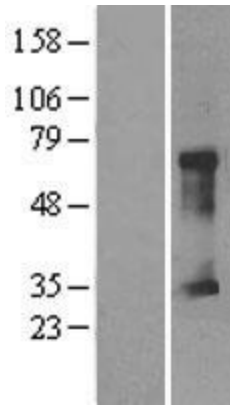
MW: 28.2 kDa

Gene Summary: This gene encodes a member of the chloride intracellular channel (CLIC) family of chloride ion channels. The encoded protein associates with actin-based cytoskeletal structures and may play a role in multiple processes including hair cell stereocilia formation, myoblast proliferation and glomerular podocyte and endothelial cell maintenance. Alternatively spliced transcript variants encoding multiple isoforms have been observed for this gene. [provided by RefSeq, Dec 2011]

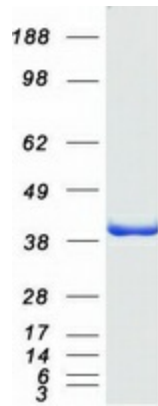
Product images:



Circular map for RC205906



Western blot validation of overexpression lysate (Cat# [LY402589]) using anti-DDK antibody (Cat# [TA50011-100]). Left: Cell lysates from untransfected HEK293T cells; Right: Cell lysates from HEK293T cells transfected with RC205906 using transfection reagent MegaTran 2.0 (Cat# [TT210002]).



Coomassie blue staining of purified CLIC5 protein (Cat# [TP305906]). The protein was produced from HEK293T cells transfected with CLIC5 cDNA clone (Cat# RC205906) using MegaTran 2.0 (Cat# [TT210002]).