

Product datasheet for **RC205900**

Epiphycan (EPYC) (NM_004950) Human Tagged ORF Clone

Product data:

Product Type:	Expression Plasmids
Product Name:	Epiphycan (EPYC) (NM_004950) Human Tagged ORF Clone
Tag:	Myc-DDK
Symbol:	Epiphycan
Synonyms:	DSPG3; Pg-Lb; PGLB; SLRR3B
Mammalian Cell Selection:	Neomycin
Vector:	pCMV6-Entry (PS100001)
E. coli Selection:	Kanamycin (25 ug/mL)
ORF Nucleotide Sequence:	>RC205900 representing NM_004950 Red=Cloning site Blue=ORF Green=Tags(s)

TTTTGTAATACGACTCACTATAGGGCGGCCGGAATTCGTCGACTGGATCCGGTACCGAGGAGATCTGCC
GCC**CGATCGCC**

ATGAAGACATTAGCAGGACTTGTCTGGGACTTGTTCATCTTTGATGCTGCTGTGACTGCCCAACTCTAG
AGTCCATCAACTATGACTCAGAACTATGATGCCACCTAGAACCTGGATAATTTGTACAACATGA
AAACATACCTGTTGGTAAAGTTGAGATTGAAATAGCCACAGTGTGCCTCAGGGAACAGAGAGCTCCTC
ACTCCACCCACAGCCTGAGAAGGCCAGGAAGAGGAAGAGGAGGGAATCTACTCCAGGCTGATTG
ATGGCTCTTCTCCCAGGAGCCTGAATTCACAGGGTTCTGGGGCCACACAAAATGAAGACTTTCCAAC
CTGTCTTTGTGTAATTTATAAGTACCACCGTGTACTGTGATGACCATGAACCTGATGCTATTCCTCCG
CTGCCAAAGAACCCTTATTTCTATTCCTGCTTAAACAGAATTAAGAAATCAACAAAATGACTTTG
CAAGCCTAAGTGATTTAAAAGGATTGATCTGACATCAAATTTAATATCTGAGATTGATGAAGATGCATT
CCGAAAATGCCTCAACTTCGAGAGCTTGTCTGCGTGACAACAAAATAAGGCAGCTCCCAGAATTGCCA
ACCACTTTGACATTTATTGATATTAGCAACAATAGACTTGAAGGAAAGGGATAAAGCAAGAAGCATTTA
AAGACATGTATGATCTCCATCATCTGTACCTCACTGATAACAACCTGGACCACATCCCTCTGCCACTCCC
AGAAAATCTACGAGCCCTCACCTCCAGAATAACAACATTCTGGAATGCACGAAGATACGTTCTGCAAT
GTTAAAATTTGACTTATATTCGTAAGGCACTAGAGGACATTCGATTGGATGGAACCCCTATTAATCTCA
GAAAACCTCCTCAAGCATACATGTGTCTACCTCGTCTGCTGTTGGGAGCCTTGTCT

ACGCGTACGCGGCCGCTCGAGCAGAACTCATCTCAGAAGAGGATCTGGCAGCAAATGATATCCTGGATT
ACAAGGATGACGACGATAAGGTTTAA



[View online »](#)

Protein Sequence: >RC205900 representing NM_004950
Red=Cloning site Green=Tags(s)

MKTLAGLVLGLVIFDAAVTAPTLESINYDSEYDATLEDLDNLNYENIPVGKVEIEIATVMPSGNRELL
 TPPPQPEKAQEEEEESTPRLIDGSSPQEPEFTGVLGPHTNEDFPTCLLCTCISTTVYCDDELDAIPP
 LPKNTAYFYSRFNRIKKINKNDFASLSDLKRIDLTSNLISEIDEDAFRKLPLQLRELVLVDNKRQLPELP
 TTLTFIDISNNRLGRKGIKQEAFKDMYDLHHLYLTDNNLDHIPLPLPENLRALHLQNNNILEMHEDTFCN
 VKNLTYIRKALEDIRLDGNPINLSKTPQAYMCLPRLPVGSLV

TRTRPLEQKLISEEDLAANDILDYKDDDDKV

Chromatograms: https://cdn.origene.com/chromatograms/mg3106_c01.zip

Restriction Sites: SgfI-MluI

Cloning Scheme:

Cloning sites used for ORF Shuttling:



* The last codon before the Stop codon of the ORF

ACCN: NM_004950

ORF Size: 966 bp

OTI Disclaimer: The molecular sequence of this clone aligns with the gene accession number as a point of reference only. However, individual transcript sequences of the same gene can differ through naturally occurring variations (e.g. polymorphisms), each with its own valid existence. This clone is substantially in agreement with the reference, but a complete review of all prevailing variants is recommended prior to use. [More info](#)

OTI Annotation: This clone was engineered to express the complete ORF with an expression tag. Expression varies depending on the nature of the gene.

Components: The ORF clone is ion-exchange column purified and shipped in a 2D barcoded Matrix tube containing 10ug of transfection-ready, dried plasmid DNA (reconstitute with 100 ul of water).

Reconstitution Method:

1. Centrifuge at 5,000xg for 5min.
2. Carefully open the tube and add 100ul of sterile water to dissolve the DNA.
3. Close the tube and incubate for 10 minutes at room temperature.
4. Briefly vortex the tube and then do a quick spin (less than 5000xg) to concentrate the liquid at the bottom.
5. Store the suspended plasmid at -20°C. The DNA is stable for at least one year from date of shipping when stored at -20°C.

RefSeq: [NM_004950.5](#)

RefSeq Size: 1594 bp

RefSeq ORF: 969 bp

Locus ID: 1833

UniProt ID: [Q99645](#)

Cytogenetics: 12q21.33

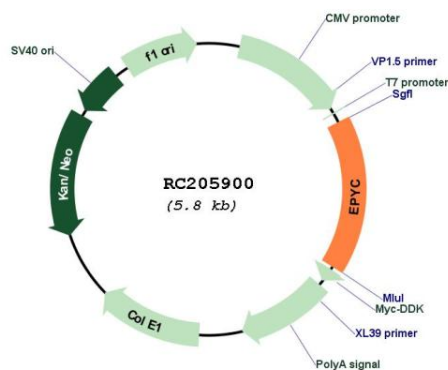
Domains: LRRNT, LRR, LRR_TYP

Protein Families: Secreted Protein

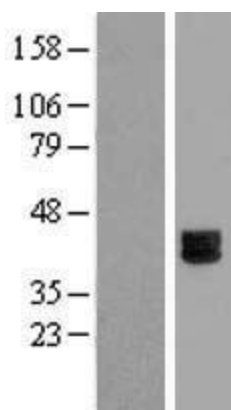
MW: 36.58 kDa

Gene Summary: Dermatan sulfate proteoglycan 3 is a member of the small leucine-rich repeat proteoglycan family. This gene is composed of seven exons. It regulates fibrillogenesis by interacting with collagen fibrils and other extracellular matrix proteins. [provided by RefSeq, Jul 2008]

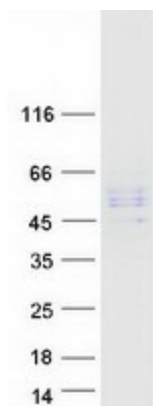
Product images:



Circular map for RC205900



Western blot validation of overexpression lysate (Cat# [LY417637]) using anti-DDK antibody (Cat# [TA50011-100]). Left: Cell lysates from untransfected HEK293T cells; Right: Cell lysates from HEK293T cells transfected with RC205900 using transfection reagent MegaTran 2.0 (Cat# [TT210002]).



Coomassie blue staining of purified EPYC protein (Cat# [TP305900]). The protein was produced from HEK293T cells transfected with EPYC cDNA clone (Cat# RC205900) using MegaTran 2.0 (Cat# [TT210002]).