

Product datasheet for **RC205899**

GNGT1 (NM_021955) Human Tagged ORF Clone

Product data:

Product Type: Expression Plasmids
Product Name: GNGT1 (NM_021955) Human Tagged ORF Clone
Tag: Myc-DDK
Symbol: GNGT1
Synonyms: GNG1
Mammalian Cell Selection: Neomycin
Vector: pCMV6-Entry (PS100001)
E. coli Selection: Kanamycin (25 ug/mL)
ORF Nucleotide Sequence: >RC205899 ORF sequence
 Red=Cloning site Blue=ORF Green=Tags(s)

TTTTGTAAATACGACTCACTATAGGGCGGCCGGAATTCGTCGACTGGATCCGGTACCGAGGAGATCTGCC
 GCC**CGATCGCC**

ATGCCAGTAATCAATATTGAGGACCTGACAGAAAAGGACAAATTGAAGATGGAAGTTGACCAGCTCAAGA
 AAGAAGTGACACTGGAAGAATGCTAGTTTCAAATGTTGTGAAGAAGTAAGAGATTACGTTGAAGAACG
 ATCTGGCGAGGATCCACTGGTAAAGGGCATCCCAGAGGACAAAAATCCCTTCAAGGAGCTCAAAGGAGGC
 TGTGTGATTTCA

ACGCGTACGCGGCCGCTCGAGCAGAACTCATCTCAGAAGAGGATCTGGCAGCAAATGATATCCTGGATT
 ACAAGGATGACGACGATAAGGTTTAA

Protein Sequence: >RC205899 protein sequence
 Red=Cloning site Green=Tags(s)
 MPVINIEDLTEKDKLKMEVDQLKKEVTLERMLVSKCCEEVRDYVEERSGEDPLVKGIPEDKNPFKELKGG
 CVIS

TRTRPLE**QKL**ISEEDLAANDILDYKDDDDKV

Chromatograms: https://cdn.origene.com/chromatograms/mk6628_g05.zip

Restriction Sites: SgfI-MluI


[View online »](#)

Cloning Scheme:


ACCN: NM_021955

ORF Size: 222 bp

OTI Disclaimer: The molecular sequence of this clone aligns with the gene accession number as a point of reference only. However, individual transcript sequences of the same gene can differ through naturally occurring variations (e.g. polymorphisms), each with its own valid existence. This clone is substantially in agreement with the reference, but a complete review of all prevailing variants is recommended prior to use. [More info](#)

OTI Annotation: This clone was engineered to express the complete ORF with an expression tag. Expression varies depending on the nature of the gene.

Components: The ORF clone is ion-exchange column purified and shipped in a 2D barcoded Matrix tube containing 10ug of transfection-ready, dried plasmid DNA (reconstitute with 100 ul of water).

Reconstitution Method:

1. Centrifuge at 5,000xg for 5min.
2. Carefully open the tube and add 100ul of sterile water to dissolve the DNA.
3. Close the tube and incubate for 10 minutes at room temperature.
4. Briefly vortex the tube and then do a quick spin (less than 5000xg) to concentrate the liquid at the bottom.
5. Store the suspended plasmid at -20°C. The DNA is stable for at least one year from date of shipping when stored at -20°C.

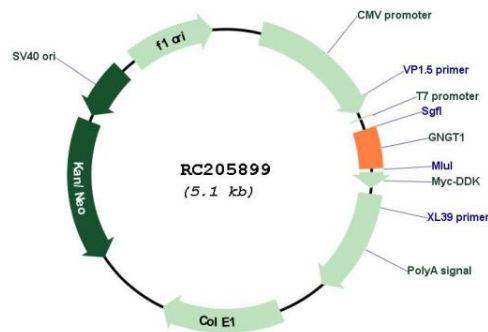
Note: Plasmids are not sterile. For experiments where strict sterility is required, filtration with 0.22um filter is required.

RefSeq: [NM_021955.5](#)

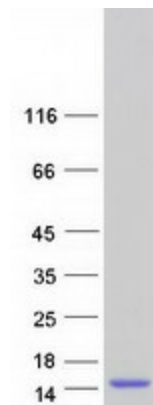
RefSeq Size: 628 bp

RefSeq ORF:	225 bp
Locus ID:	2792
UniProt ID:	P63211
Cytogenetics:	7q21.3
Protein Families:	Druggable Genome
Protein Pathways:	Chemokine signaling pathway
MW:	8.5 kDa
Gene Summary:	This gene encodes the gamma subunit of transducin, a guanine nucleotide-binding protein (G protein) that is found in rod outer segments. Transducin, also known as GMPase, mediates the activation of a cyclic GTP-specific (guanosine monophosphate) phosphodiesterase by rhodopsin. [provided by RefSeq, Jul 2016]

Product images:



Circular map for RC205899



Coomassie blue staining of purified GNGT1 protein (Cat# [TP305899]). The protein was produced from HEK293T cells transfected with GNGT1 cDNA clone (Cat# RC205899) using MegaTran 2.0 (Cat# [TT210002]).