

Product datasheet for RC205897

CSHL1 (NM_001318) Human Tagged ORF Clone

Product data:

Product Type: Expression Plasmids
Product Name: CSHL1 (NM_001318) Human Tagged ORF Clone
Tag: Myc-DDK
Symbol: CSHL1
Synonyms: CS-5; CSHP1; CSL; GHB4; hCS-L
Mammalian Cell Selection: Neomycin
Vector: pCMV6-Entry (PS100001)
E. coli Selection: Kanamycin (25 ug/mL)
ORF Nucleotide Sequence: >RC205897 ORF sequence
 Red=Cloning site Blue=ORF Green=Tags(s)

TTTTGTAATACGACTCACTATAGGGCGCCGGAATTCGTCGACTGGATCCGGTACCGAGGAGATCTGCC
 GCC**CGATCGCC**

ATGGAGGAAACGCAGCAGAAATCCAACCTAGAGCTGCTCCACATCTCCCTGCTGCTCATCGAGTCGCGGC
 TGGAGCCCGTGCAGTTCCTCAGGAGTACCTTACCAACAACCTGGTGTATGACACCTCGGACAGCGATGA
 CTATCACCTCCTAAAGGACCTAGAGGAAGGCATCCAAATGCTGATGGGGAGGCTGGAAGACGGCAGCCAC
 CTGACTGGGCAGACCCTCAAGCAGACCTACAGCAAGTTTGACACAACTCGACAACCATGACGCACTGC
 TCAAGAACTACGGGCTGCTCCACTGCTCAGGAAGGACATGGACAAGGTCGAGACATTCTGCGCATGGT
 GCAGTGCCGCTCTGTGGAGGGCAGCTGTGGCTTC

ACGCGTACGCGGCCGCTCGAGCAGAAACTCATCTCAGAAGAGGATCTGGCAGCAAATGATATCCTGGATT
 ACAAGGATGACGACGATAAGGTTTAA

Protein Sequence: >RC205897 protein sequence
 Red=Cloning site Green=Tags(s)
 MEETQQKSNLELLHISLLLIIESRLEPVRFLRSTFTNNLVYDTSDDYHLLKDLEEGIQMLMGRLEDGSH
 LTGQTLKQTYSKFDTNSHNHDALLKKNYGLLHCFRKDMDKVETFLRMVQCRSVEGSCGF

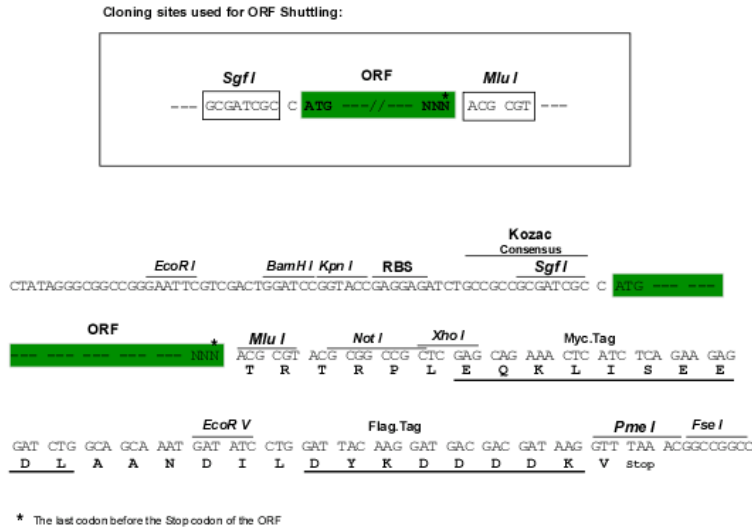
TRTRPLEQKLISEEDLAANDILDYKDDDDKV

Chromatograms: https://cdn.origene.com/chromatograms/mk6069_f11.zip

Restriction Sites: SgfI-MluI



[View online »](#)

Cloning Scheme:


ACCN: NM_001318

ORF Size: 384 bp

OTI Disclaimer: The molecular sequence of this clone aligns with the gene accession number as a point of reference only. However, individual transcript sequences of the same gene can differ through naturally occurring variations (e.g. polymorphisms), each with its own valid existence. This clone is substantially in agreement with the reference, but a complete review of all prevailing variants is recommended prior to use. [More info](#)

OTI Annotation: This clone was engineered to express the complete ORF with an expression tag. Expression varies depending on the nature of the gene.

Components: The ORF clone is ion-exchange column purified and shipped in a 2D barcoded Matrix tube containing 10ug of transfection-ready, dried plasmid DNA (reconstitute with 100 ul of water).

- Reconstitution Method:**
1. Centrifuge at 5,000xg for 5min.
 2. Carefully open the tube and add 100ul of sterile water to dissolve the DNA.
 3. Close the tube and incubate for 10 minutes at room temperature.
 4. Briefly vortex the tube and then do a quick spin (less than 5000xg) to concentrate the liquid at the bottom.
 5. Store the suspended plasmid at -20°C. The DNA is stable for at least one year from date of shipping when stored at -20°C.

Note: Plasmids are not sterile. For experiments where strict sterility is required, filtration with 0.22um filter is required.

RefSeq: [NM_001318.4](#)

RefSeq Size: 661 bp

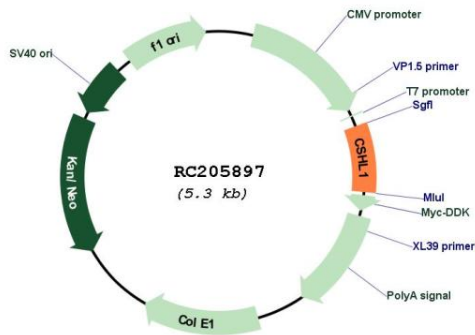
RefSeq ORF: 387 bp

Locus ID: 1444
Cytogenetics: 17q23.3
Domains: hormone

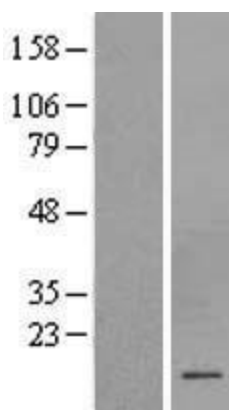
Protein Families: Secreted Protein
MW: 14.9 kDa

Gene Summary: The protein encoded by this gene is a member of the somatotropin/prolactin family of hormones which play an important role in growth control. The gene, along with four other related genes, is located at the growth hormone locus on chromosome 17 where they are interspersed in the same transcriptional orientation; an arrangement which is thought to have evolved by a series of gene duplications. Although the five genes share a remarkably high degree of sequence identity, they are expressed selectively in different tissues. This particular family member is expressed in placental villi, although it was originally thought to be a pseudogene. In fact, alternative splicing suggests that the majority of the transcripts would be unable to express a secreted protein. Alternatively spliced transcript variants encoding different isoforms have been identified. [provided by RefSeq, Jul 2008]

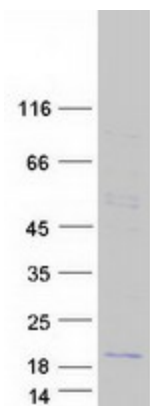
Product images:



Circular map for RC205897



Western blot validation of overexpression lysate (Cat# [LY420013]) using anti-DDK antibody (Cat# [TA50011-100]). Left: Cell lysates from untransfected HEK293T cells; Right: Cell lysates from HEK293T cells transfected with RC205897 using transfection reagent MegaTran 2.0 (Cat# [TT210002]).



Coomassie blue staining of purified CSHL1 protein (Cat# [TP305897]). The protein was produced from HEK293T cells transfected with CSHL1 cDNA clone (Cat# RC205897) using MegaTran 2.0 (Cat# [TT210002]).