

## Product datasheet for **RC205896**

### ICAM4 (NM\_001544) Human Tagged ORF Clone

#### Product data:

Product Type:	Expression Plasmids
Product Name:	ICAM4 (NM_001544) Human Tagged ORF Clone
Tag:	Myc-DDK
Symbol:	ICAM4
Synonyms:	CD242; LW
Mammalian Cell Selection:	Neomycin
Vector:	pCMV6-Entry (PS100001)
E. coli Selection:	Kanamycin (25 ug/mL)
ORF Nucleotide Sequence:	>RC205896 ORF sequence Red=Cloning site Blue=ORF Green=Tags(s)

TTTTGTAATACGACTCACTATAGGGCGGCCGGAATTCGTCGACTGGATCCGGTACCGAGGAGATCTGCC  
GCC**CGATCGCC**

ATGGGGTCTCTGTTCCCTCTGTCGCTGCTGTTTTTTTTGGCGGCCGCTACCCGGGAGTTGGGAGCGCGC  
TGGGACGCCGGACTAAGCGGGCGCAAAGCCCCAAGGGTAGCCCTCTCGCGCCCTCCGGGACCTCAGTGCC  
CTTCTGGGTGCGCATGAGCCCGGAGTTCGTGGCTGTGCAGCCGGGAAGTCAGTGCAGCTCAATTGCAGC  
AACAGCTGTCCCCAGCCGAGAATTCAGCCTCCGCACCCCGCTCGGCAAGGCAAGACGCTCAGAGGGC  
CGGTTGGGTGTCTTACCAGCTGCTCGAGTGAGGGCCTGGAGCTCCCTCGCGCACTGCCTCGTGACCTG  
CGCAGGAAAAACAGCTGGGCCACCTCCAGGATCACCGCCTACAAACCGCCACAGCGTATTTGGAG  
CCTCCGGTCTTAAAGGGCAGGAAATACACTTTGCGCTGCCACGTGACGCAGGTGTTCCCGGTGGGCTACT  
TGGTGGTGACCCTGAGGCATGGAAGCCGGTCACTATTCCGAAAGCCTGGAGCGCTTACCAGCCCTGGA  
TCTGGCAACGTGACCTTGACCTACGAGTTTGTGCTGGACCCCGCGACTTCTGGCAGCCCGTATCTGC  
CACGCGCCCTCAATCTCGACGGCCTGGTGGTCCGCAACAGCTCGGCACCCATTACACTGATGCTCGCTT  
GGAGCCCCGCGCCACAGCTTTGGCCTCCGGTTCATCGCTGCCCTTGTAGGGATCTCCTCACTGTGGG  
CGCTGCGTACCTATGCAAGTGCCTAGCTATGAAGTCCCAGGCG

**ACGCGT**ACGCGGCCGCTCGAGCAGAAACTCATCTCAGAAGAGGATCTGGCAGCAAATGATATCCTGGATT  
ACAAGGATGACGACGATAAGGTTTAA



[View online »](#)

**Protein Sequence:** >RC205896 protein sequence  
Red=Cloning site Green=Tags(s)

MGSLFPLSLLFFLAAAYPGVGSALGRRTKRAQSPKGSPLAPSGTSVFPWVRMSPEFVAVQPGKSVQLNCS  
 NSCPQPQNSSLRTPLRQGKTLRPGWVSYQLLDVRAWSSLAHCLVTCAGKTRWATSRITAYKPPHSVILE  
 PPVLKGRKYTLRCHVTQVFPVGYLVVTLRHGSRVIYSESLERFTGLDLANVTLTVEFAAGPRDFWQFPVIC  
 HARLNL DGLVVRNSSAPITLMLAWSPAPTALASGSIAALVGILLTVGAAYLCKCLAMKSQA

TRTRPLEQKLISEEDLAANDILDYKDDDDKV

**Chromatograms:** [https://cdn.origene.com/chromatograms/mk6550\\_b07.zip](https://cdn.origene.com/chromatograms/mk6550_b07.zip)

**Restriction Sites:** SgfI-MluI

**Cloning Scheme:**

Cloning sites used for ORF Shuttling:



\* The last codon before the Stop codon of the ORF

**ACCN:** NM\_001544

**ORF Size:** 813 bp

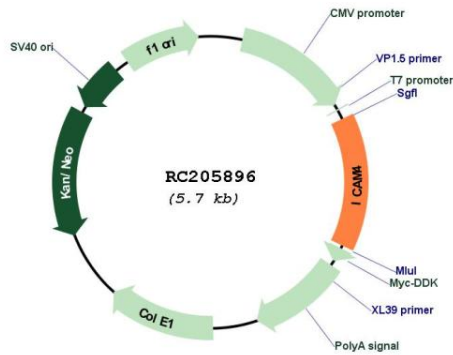
**OTI Disclaimer:** The molecular sequence of this clone aligns with the gene accession number as a point of reference only. However, individual transcript sequences of the same gene can differ through naturally occurring variations (e.g. polymorphisms), each with its own valid existence. This clone is substantially in agreement with the reference, but a complete review of all prevailing variants is recommended prior to use. [More info](#)

**OTI Annotation:** This clone was engineered to express the complete ORF with an expression tag. Expression varies depending on the nature of the gene.

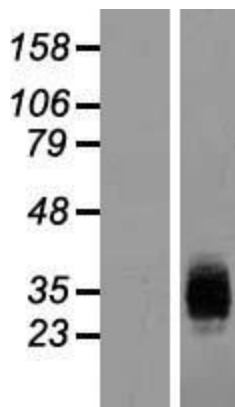
**Components:** The ORF clone is ion-exchange column purified and shipped in a 2D barcoded Matrix tube containing 10ug of transfection-ready, dried plasmid DNA (reconstitute with 100 ul of water).

<b>Reconstitution Method:</b>	<ol style="list-style-type: none"><li>1. Centrifuge at 5,000xg for 5min.</li><li>2. Carefully open the tube and add 100ul of sterile water to dissolve the DNA.</li><li>3. Close the tube and incubate for 10 minutes at room temperature.</li><li>4. Briefly vortex the tube and then do a quick spin (less than 5000xg) to concentrate the liquid at the bottom.</li><li>5. Store the suspended plasmid at -20°C. The DNA is stable for at least one year from date of shipping when stored at -20°C.</li></ol>
<b>Note:</b>	Plasmids are not sterile. For experiments where strict sterility is required, filtration with 0.22um filter is required.
<b>RefSeq:</b>	<a href="#">NM_001544.5</a>
<b>RefSeq Size:</b>	1354 bp
<b>RefSeq ORF:</b>	816 bp
<b>Locus ID:</b>	3386
<b>UniProt ID:</b>	<a href="#">Q14773</a>
<b>Cytogenetics:</b>	19p13.2
<b>Protein Families:</b>	Secreted Protein, Transmembrane
<b>MW:</b>	29.3 kDa
<b>Gene Summary:</b>	<p>This gene encodes the Landsteiner-Wiener (LW) blood group antigen(s) that belongs to the immunoglobulin (Ig) superfamily, and that shares similarity with the intercellular adhesion molecule (ICAM) protein family. This ICAM protein contains 2 Ig-like C2-type domains and binds to the leukocyte adhesion LFA-1 protein. The molecular basis of the LW(A)/LW(B) blood group antigens is a single aa variation at position 100; Gln-100=LW(A) and Arg-100=LW(B). Alternative splicing results in multiple transcript variants encoding distinct isoforms. [provided by RefSeq, Jul 2008]</p>

Product images:



Circular map for RC205896



Western blot validation of overexpression lysate (Cat# [LY419874]) using anti-DDK antibody (Cat# [TA50011-100]). Left: Cell lysates from untransfected HEK293T cells; Right: Cell lysates from HEK293T cells transfected with RC205896 using transfection reagent MegaTran 2.0 (Cat# [TT210002]).