

Product datasheet for **RC205891**

RBP5 (NM_031491) Human Tagged ORF Clone

Product data:

Product Type: Expression Plasmids
Product Name: RBP5 (NM_031491) Human Tagged ORF Clone
Tag: Myc-DDK
Symbol: RBP5
Synonyms: CRBP-III; CRBP3; CRBPIII; HRBPiso
Mammalian Cell Selection: Neomycin
Vector: pCMV6-Entry (PS100001)
E. coli Selection: Kanamycin (25 ug/mL)
ORF Nucleotide Sequence: >RC205891 ORF sequence
 Red=Cloning site Blue=ORF Green=Tags(s)

TTTGTGTAATACGACTCACTATAGGGCGGCCGGAATTCGTCGACTGGATCCGGTACCGAGGAGATCTGCC
 GCC**CGGATCGCC**

ATGCTCCCAACCTCACTGGCTACTACCGCTTTGTCTCGCAGAAGAACATGGAGGACTACCTGCAAGCCC
 TAAACATCAGCTTGGCTGTGCGGAAGATCGCGTGTCTGCTGAAGCCGGACAAGGAGATCGAACACCAGGG
 CAACCACATGACGGTGAGGACGCTCAGCACCTCCGAACTACACTGTGCAGTTTGTGTGGGAGTGGAG
 TTTGAGGAGGACCTCAGGAGCGTGGACGGACGAAATGCCAGACCATAGTAACCTGGGAGGAGGAGCACC
 TGGTGTGTGTGCAGAAAGGGGAGGTCCCAACCGGGGCTGGAGACACTGGCTGGAGGGAGAGATGCTGTA
 TCTGGAAGTACTGCAAGGGATGCAGTGTGCGAGCAGGTCTTCAGGAAGGTCAGA

ACGCGTACGCGGCCGCTCGAGCAGAACTCATCTCAGAAGAGGATCTGGCAGCAAATGATATCCTGGATT
 ACAAGGATGACGACGATAAGGTTTAA

Protein Sequence: >RC205891 protein sequence
 Red=Cloning site Green=Tags(s)

MPPNLTGYRFFVSQKNMEDYLQALNISLAVRKIALLLKPDKEIEHQGNHMTVRTLSTFRNYTVQFDVGVE
 FEEDLRSDGRKCQTIVTWEELHVCVQKGEVFNRGWRHWLEGEMLYLELTARDAVCEQVFRKVR

TRTRPLEQKLISEEDLAANDILDYKDDDDKV

Chromatograms: https://cdn.origene.com/chromatograms/mk6551_d07.zip

Restriction Sites: SgfI-MluI



[View online »](#)

Cloning Scheme:


ACCN: NM_031491

ORF Size: 405 bp

OTI Disclaimer: The molecular sequence of this clone aligns with the gene accession number as a point of reference only. However, individual transcript sequences of the same gene can differ through naturally occurring variations (e.g. polymorphisms), each with its own valid existence. This clone is substantially in agreement with the reference, but a complete review of all prevailing variants is recommended prior to use. [More info](#)

OTI Annotation: This clone was engineered to express the complete ORF with an expression tag. Expression varies depending on the nature of the gene.

Components: The ORF clone is ion-exchange column purified and shipped in a 2D barcoded Matrix tube containing 10ug of transfection-ready, dried plasmid DNA (reconstitute with 100 ul of water).

Reconstitution Method:

1. Centrifuge at 5,000xg for 5min.
2. Carefully open the tube and add 100ul of sterile water to dissolve the DNA.
3. Close the tube and incubate for 10 minutes at room temperature.
4. Briefly vortex the tube and then do a quick spin (less than 5000xg) to concentrate the liquid at the bottom.
5. Store the suspended plasmid at -20°C. The DNA is stable for at least one year from date of shipping when stored at -20°C.

RefSeq: [NM_031491.4](#)

RefSeq Size: 968 bp

RefSeq ORF: 408 bp

Locus ID: 83758

UniProt ID: [P82980](#)

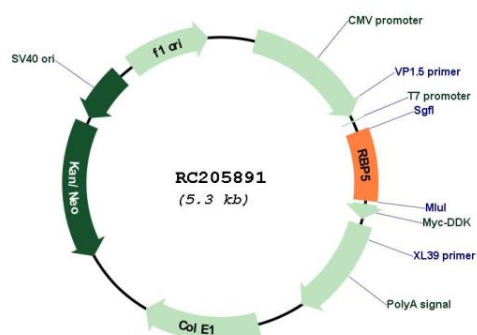
Cytogenetics: 12p13.31

Domains: lipocalin

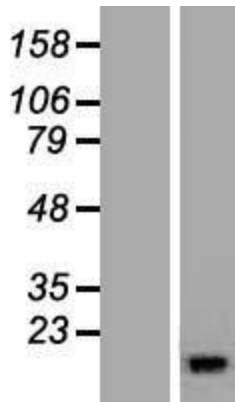
MW: 15.9 kDa

Gene Summary: The protein encoded by this gene is a cellular retinol-binding protein expressed highly in kidney and liver. Down-regulation of the encoded protein in hepatocellular carcinoma was associated with large tumor size and poor patient survival rates. [provided by RefSeq, Jul 2016]

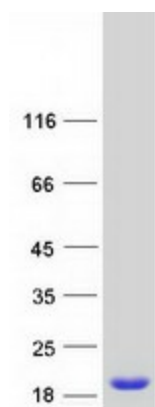
Product images:



Circular map for RC205891



Western blot validation of overexpression lysate (Cat# [LY410487]) using anti-DDK antibody (Cat# [TA50011-100]). Left: Cell lysates from untransfected HEK293T cells; Right: Cell lysates from HEK293T cells transfected with RC205891 using transfection reagent MegaTran 2.0 (Cat# [TT210002]).



Coomassie blue staining of purified RBP5 protein (Cat# [TP305891]). The protein was produced from HEK293T cells transfected with RBP5 cDNA clone (Cat# RC205891) using MegaTran 2.0 (Cat# [TT210002]).