

Product datasheet for **RC205889**

PRAC (PRAC1) (NM_032391) Human Tagged ORF Clone

Product data:

Product Type: Expression Plasmids
Product Name: PRAC (PRAC1) (NM_032391) Human Tagged ORF Clone
Tag: Myc-DDK
Symbol: PRAC
Synonyms: C17orf92; PRAC
Mammalian Cell Selection: Neomycin
Vector: pCMV6-Entry (PS100001)
E. coli Selection: Kanamycin (25 ug/mL)
ORF Nucleotide Sequence: >RC205889 ORF sequence
Red=Cloning site Blue=ORF Green=Tags(s)

TTTTGTAATACGACTCACTATAGGGCGGCCGGAATTCGTCGACTGGATCCGGTACCGAGGAGATCTGCC
GCC**CGATCGCC**

ATGTTGTGCGCCATTTCTCAGATCAAGGACCGGCCATCTTACTACCTCCAAGAGTGCTTTTCTCTCTA
ATAAGAAAACATCTACTTTGAAACATCTACTGGCGAGACCAGGAGTGATGGCTCAGCCTGTAATTCTGG
AATTCGGGAGGCCGAGGCAGGAAGATTCCT

ACGCGTACGCGGCCGCTCGAGCAGAACTCATCTCAGAAGAGGATCTGGCAGCAAATGATATCCTGGATT
ACAAGGATGACGACGATAAGGTTTAA

Protein Sequence: >RC205889 protein sequence
Red=Cloning site Green=Tags(s)
MLCAHFSQGPahlTTSKSAFLSNKKTSTLKHLLGETRSDGSACNSGISGGRGRKIP
TRTRPLEQKLISEEDLAANDILDYKDDDDKV

Chromatograms: https://cdn.origene.com/chromatograms/mk6034_c11.zip

Restriction Sites: SgfI-MluI



[View online »](#)

Cloning Scheme:



ACCN: NM_032391

ORF Size: 171 bp

OTI Disclaimer: The molecular sequence of this clone aligns with the gene accession number as a point of reference only. However, individual transcript sequences of the same gene can differ through naturally occurring variations (e.g. polymorphisms), each with its own valid existence. This clone is substantially in agreement with the reference, but a complete review of all prevailing variants is recommended prior to use. [More info](#)

OTI Annotation: This clone was engineered to express the complete ORF with an expression tag. Expression varies depending on the nature of the gene.

Components: The ORF clone is ion-exchange column purified and shipped in a 2D barcoded Matrix tube containing 10ug of transfection-ready, dried plasmid DNA (reconstitute with 100 ul of water).

Reconstitution Method:

1. Centrifuge at 5,000xg for 5min.
2. Carefully open the tube and add 100ul of sterile water to dissolve the DNA.
3. Close the tube and incubate for 10 minutes at room temperature.
4. Briefly vortex the tube and then do a quick spin (less than 5000xg) to concentrate the liquid at the bottom.
5. Store the suspended plasmid at -20°C. The DNA is stable for at least one year from date of shipping when stored at -20°C.

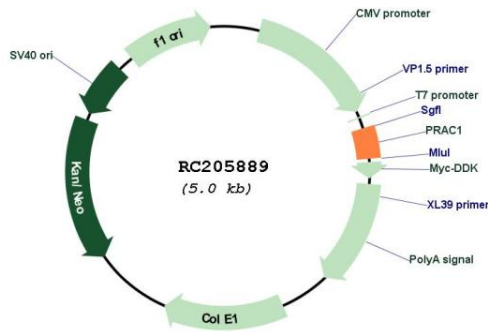
Note: Plasmids are not sterile. For experiments where strict sterility is required, filtration with 0.22um filter is required.

RefSeq: [NM_032391.3](#)

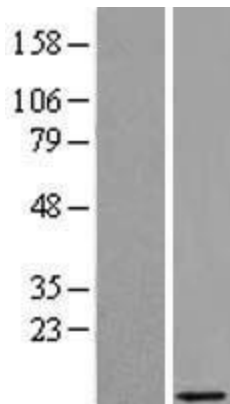
RefSeq Size: 403 bp
 RefSeq ORF: 174 bp
 Locus ID: 84366
 UniProt ID: [Q96KF2](#)
 Cytogenetics: 17q21.32
 MW: 6 kDa

Gene Summary: This gene is reported to be specifically expressed in prostate, rectum and distal colon. Sequence analysis suggests that it may play a regulatory role in the nucleus. [provided by RefSeq, Jul 2008]

Product images:



Circular map for RC205889



Western blot validation of overexpression lysate (Cat# [LY403160]) using anti-DDK antibody (Cat# [TA50011-100]). Left: Cell lysates from untransfected HEK293T cells; Right: Cell lysates from HEK293T cells transfected with RC205889 using transfection reagent MegaTran 2.0 (Cat# [TT210002]).