

## Product datasheet for RC205888

### GPR91 (SUCNR1) (NM\_033050) Human Tagged ORF Clone

#### Product data:

Product Type:	Expression Plasmids
Product Name:	GPR91 (SUCNR1) (NM_033050) Human Tagged ORF Clone
Tag:	Myc-DDK
Symbol:	GPR91
Synonyms:	GPR91
Mammalian Cell Selection:	Neomycin
Vector:	pCMV6-Entry (PS100001)
E. coli Selection:	Kanamycin (25 ug/mL)
ORF Nucleotide Sequence:	>RC205888 ORF sequence Red=Cloning site Blue=ORF Green=Tags(s)

TTTTGTAATACGACTCACTATAGGGCGGCCGGAATTCGTCGACTGGATCCGGTACCGAGGAGATCTGCC  
GCC**CGGATCGCC**

ATGCTGGGGATCATGGCATGGAATGCAACTTGCAAAAACCTGGCTGGCAGCAGAGGCTGCCCTGGAAAAGT  
ACTACCTTTCCATTTTTATGGGATTGAGTTCGTTGTGGGAGTCCTTGAAAATACCATTGTTGTTTACGG  
CTACATCTTCTCTGAAGAAGTGAACAGCAGTAATATTTATCTCTTTAACCTCTGTCTCTGACTTA  
GCTTTTCTGTGCACCCTCCCATGCTGATAAGGAGTTATGCCAATGAAAACCTGGATATATGGAGACGTGC  
TCTGCATAAGCAACCGATATGTGCTTCATGCCAACCTCTATACCAGCATTCTCTTTCTCACTTTTATCAG  
CATAGATCGATACTTGATAAATTAAGTATCCTTTCCGAGAACACCTTCTGCAAAAAGAAAGAGTTTGCTATT  
TTAATCTCCTTGCCATTTGGGTTTTAGTAACCTTAGAGTTACTACCCATACTTCCCCTTATAAATCCTG  
TTAATACTGACAAATGGCACCACCTGTAATGATTTTGCAAGTTCTGGAGACCCCAACTACAACCTCATTTA  
CAGCATGTGTCTAACACTGTTGGGGTTCCTTATTCCTCTTTTTGTGATGTGTTTCTTTTATTACAAGATT  
GCTCTCTCCTAAAGCAGAGGAATAGGCAGGTTGCTACTGCTCTGCCCTTGAAAAGCCTCTCAACTGG  
TCATCATGGCAGTGGTAATCTTCTGTGCTTTTTACACCCTATCACGTCATGCGGAATGTGAGGATCGC  
TTCACGCCTGGGAGTTGGAAGCAGTATCAGTGCACCTCAGGTCGTCATCAACTCCTTTTACATTGTGACA  
CGGCCCTTTGGCCTTTCTGAACAGTGTCAACCCCTGTCTCTATTTTCTTTTGGGAGATCACTTCAGGG  
ACATGCTGATGAATCAACTGAGACACAACCTTCAAATCCCTTACATCCTTTAGCAGATGGGCTCATGAACT  
CCTACTTTCATTAGAGAAAAG

**ACGCGT**ACGCGGCCGCTCGAGCAGAAAACCTCATCTCAGAAGAGGATCTGGCAGCAAATGATATCCTGGATT  
ACAAGGATGACGACGATAAGGTTTAA



[View online »](#)

**Protein Sequence:** >RC205888 protein sequence  
Red=Cloning site Green=Tags(s)

MLGIMAWNATCKNWLAAEAALKYYLSIFYGIEFVVGVLGNTIVVYGYIFSLKNWNSSNIYLFNLSVSDL  
 AFLCTLPMLIRSYANGNWIYGDVLCISNRYVLHANLYTSILFLTFISIDRYLIIKYPFREHLLQKKEFAI  
 LISLAIWVLVTLLELLPILPLINPVITDNGTTCNDFASSGDPNYNLIYSMCLTLLGFLIPLFVMCFYYKI  
 ALFLKQRNRQVATALPLEKPLNLVIMAVVIFSVLFTPYHVMRNVRIASRLGSWKQYQCTQVVINSFYIVT  
 RPLAFLNSVINPVFYFLLGDHFRDMLMNQLRHNFKSLTSFSRWAHELLLSFREK

TRTRPLEQKLISEEDLAANDILDYKDDDDKV

**Chromatograms:** [https://cdn.origene.com/chromatograms/mk6034\\_h11.zip](https://cdn.origene.com/chromatograms/mk6034_h11.zip)

**Restriction Sites:** SgfI-MluI

**Cloning Scheme:**



**ACCN:** NM\_033050

**ORF Size:** 1002 bp

**OTI Disclaimer:** The molecular sequence of this clone aligns with the gene accession number as a point of reference only. However, individual transcript sequences of the same gene can differ through naturally occurring variations (e.g. polymorphisms), each with its own valid existence. This clone is substantially in agreement with the reference, but a complete review of all prevailing variants is recommended prior to use. [More info](#)

**OTI Annotation:** This clone was engineered to express the complete ORF with an expression tag. Expression varies depending on the nature of the gene.

**Components:** The ORF clone is ion-exchange column purified and shipped in a 2D barcoded Matrix tube containing 10ug of transfection-ready, dried plasmid DNA (reconstitute with 100 ul of water).

**Reconstitution Method:**

1. Centrifuge at 5,000xg for 5min.
2. Carefully open the tube and add 100ul of sterile water to dissolve the DNA.
3. Close the tube and incubate for 10 minutes at room temperature.
4. Briefly vortex the tube and then do a quick spin (less than 5000xg) to concentrate the liquid at the bottom.
5. Store the suspended plasmid at -20°C. The DNA is stable for at least one year from date of shipping when stored at -20°C.

**Note:** Plasmids are not sterile. For experiments where strict sterility is required, filtration with 0.22um filter is required.

**RefSeq:** [NM\\_033050.6](#)

**RefSeq Size:** 1650 bp

**RefSeq ORF:** 1005 bp

**Locus ID:** 56670

**UniProt ID:** [Q9BXA5](#)

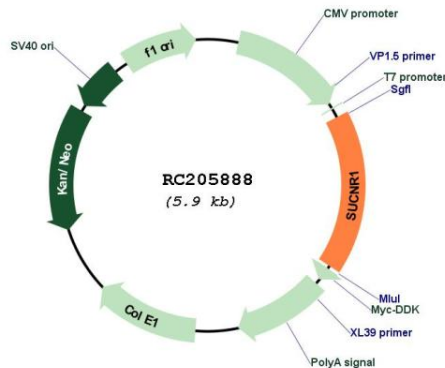
**Cytogenetics:** 3q25.1

**Protein Families:** Druggable Genome, GPCR, Transmembrane

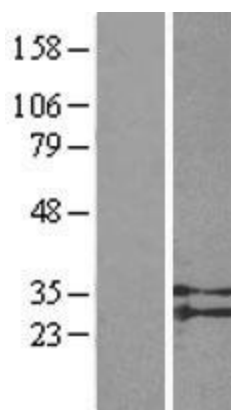
**MW:** 38.7 kDa

**Gene Summary:** This gene encodes a G-protein-coupled receptor for succinate, an intermediate molecule of the citric acid cycle. It is involved in the promotion of hematopoietic progenitor cell development, and it has a potential role in renovascular hypertension which has known correlations to renal failure, diabetes and atherosclerosis. [provided by RefSeq, Oct 2009]

**Product images:**



Circular map for RC205888



Western blot validation of overexpression lysate (Cat# [LY403217]) using anti-DDK antibody (Cat# [TA50011-100]). Left: Cell lysates from untransfected HEK293T cells; Right: Cell lysates from HEK293T cells transfected with RC205888 using transfection reagent MegaTran 2.0 (Cat# [TT210002]).