

## Product datasheet for RC205887

### HERPUD2 (NM\_022373) Human Tagged ORF Clone

#### Product data:

Product Type:	Expression Plasmids
Product Name:	HERPUD2 (NM_022373) Human Tagged ORF Clone
Tag:	Myc-DDK
Symbol:	HERPUD2
Mammalian Cell Selection:	Neomycin
Vector:	pCMV6-Entry (PS100001)
E. coli Selection:	Kanamycin (25 ug/mL)
ORF Nucleotide Sequence:	>RC205887 ORF sequence Red=Cloning site Blue=ORF Green=Tags(s)

TTTTGTAATACGACTCACTATAGGGCGGCCGGAATTCGTCGACTGGATCCGGTACCGAGGAGATCTGCC  
GCC**CGATCGCC**

ATGGACCAAAGTGGGATGGAGATTCTGTGACCCTCATCATTAAAGCACCGAATCAGAAATACAGTGACC  
AGACTATTAGCTGCTTCTTGAAGTGGACCGTGGGAAACTAAAAACGCATCTATCTAACGTTTACCCCTAG  
CAAACCATGACGAAGGATCAGAGATTGGTGTATTCGGGCAGACTGCTCCCGATCATCTGCAGCTGAAA  
GACATTCTCAGAAAACAAGATGAGTATCATATGGTTCATCTAGTATGTACTTCTCGGACTCCTCCAGTT  
CTCCAAAATCCAGCACCAATAGAGAAAGTCATGAAGCATTGACATCCAGCAGCAATTCTAGTTTCAGATCA  
TTCAGGATCAACAACCTCCATCATCTGGTCAAGAAACCTTGTCTTTAGCTGTGGTTCTTCCAGAAAGGA  
TTGAGGCAGCGTACCCTTCCACAAGCACAACTGACCAAGCACAGAGTCACCAGTTTCCATATGTAATGC  
AAGGAAATGTAGACAACCAATTTCTGGCAAGCTGCTCCACCTGGATTCCAGTGTATCCCGCTTTAG  
CCCAGTGCAGATGCTATGGTGGCAACAGATGTATGCTCATCAGTATTATATGCAGTATCAAGCTGCAGTT  
TCAGCTCAGGCCACATCAAATGTCAACCAACCCAGCCTACTACTTCACAGCCTCTAAATTTGGCACATG  
TTCCTGGAGAAGAACCCACCAGCTCAAACCTAGTGGCCAAAGAAAATCGACCCATGAATGAGAATGT  
TCAAATGAATGCACAGGGAGGTCCAGTACTAAATGAAGAAGACTTCAATCGAGACTGGCTAGACTGGATG  
TACACGTTCTCAGAGCTGCGATTCTCCTTAGCATTGTATACTTCTATTCTTTTAGTCGGTTTATCA  
TGGTAATGGGAGCCATGCTACTGTTTTATTACCAAGCTGGATGGTTTCTTTTAGGCAAGAAGGAGG  
TCATCAGCAGGCTCCCAACAATAATGCCGAAGTTAACAATGATGGGCAAAATGCAACAACCTTGGAACTT  
GAAGAAATGGAGCGTCTTATGGATGATGGGCTTGAAGATGAGAGTGGAGAAGATGGAGGTGAAGATGCCA  
GTGCAATTCAAAGGCTGGATTAATGGCTTCAGCTTGGTCTTTCATCACCACCTTCTTACTTCACTAAT  
ACCAGAGGGGCTCCCAAGTTGCCAAT

**ACGCGT**ACGCGGCCGCTCGAGCAGAAACTCATCTCAGAAGAGGATCTGGCAGCAATGATATCCTGGATT  
ACAAGGATGACGACGATAAGGTTTAA



[View online »](#)

**Protein Sequence:** >RC205887 protein sequence  
Red=Cloning site Green=Tags(s)

MDQSGMEIPVTLIIKAPNQKYSQDTISCFLNWTVGKCLKTHLSNVYPSKPLTKDQRLVYSGRLLPDHLQLK  
 DILRKQDEYHMVHLVCTSRTPPSSPKSSSTNRESHEALTSSSNSSSDHSGSTTPSSGQETLSLAVGSSSEG  
 LRQRTLPAQTDQAQSHQFPYVMQGNVDNQFPGQAAPPGFVYPAFSPLQMLWWQMYAHQYYMQYQAAV  
 SAQATSNVNPQTPTTSQPLNLAHVPGEEPPAPNLVAQENRPMNENVQMNAQGGPVLNEEDFNRDWLDWM  
 YTF SRAAILLSIVYFYSSF SRFIMVMGAMLLVYLHQAGWFFRQEGGHQQA PNNNAEVNNDGQNNANLEL  
 EEMERLMDDGLEDESGEDGGEDASAIQRPGLMASAWSFITTFFTSLIPEGPPQVAN

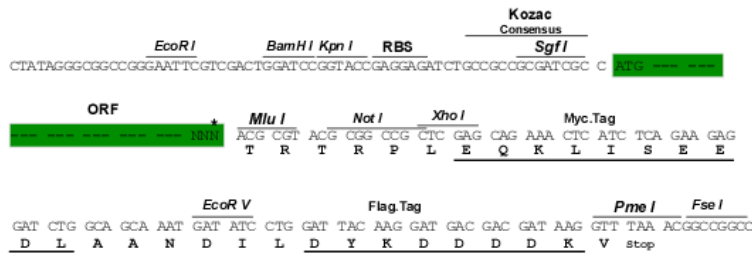
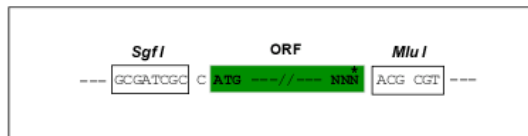
TRTRPLEQKLISEEDLAANDILDYKDDDDKV

**Chromatograms:** [https://cdn.origene.com/chromatograms/mk6564\\_g08.zip](https://cdn.origene.com/chromatograms/mk6564_g08.zip)

**Restriction Sites:** SgfI-MluI

**Cloning Scheme:**

Cloning sites used for ORF Shuttling:



\* The last codon before the Stop codon of the ORF

**ACCN:** NM\_022373

**ORF Size:** 1218 bp

**OTI Disclaimer:** The molecular sequence of this clone aligns with the gene accession number as a point of reference only. However, individual transcript sequences of the same gene can differ through naturally occurring variations (e.g. polymorphisms), each with its own valid existence. This clone is substantially in agreement with the reference, but a complete review of all prevailing variants is recommended prior to use. [More info](#)

**OTI Annotation:** This clone was engineered to express the complete ORF with an expression tag. Expression varies depending on the nature of the gene.

**Components:** The ORF clone is ion-exchange column purified and shipped in a 2D barcoded Matrix tube containing 10ug of transfection-ready, dried plasmid DNA (reconstitute with 100 ul of water).

**Reconstitution Method:**

1. Centrifuge at 5,000xg for 5min.
2. Carefully open the tube and add 100ul of sterile water to dissolve the DNA.
3. Close the tube and incubate for 10 minutes at room temperature.
4. Briefly vortex the tube and then do a quick spin (less than 5000xg) to concentrate the liquid at the bottom.
5. Store the suspended plasmid at -20°C. The DNA is stable for at least one year from date of shipping when stored at -20°C.

**Note:** Plasmids are not sterile. For experiments where strict sterility is required, filtration with 0.22um filter is required.

**RefSeq:** [NM\\_022373.3](#), [NP\\_071768.2](#)

**RefSeq Size:** 2932 bp

**RefSeq ORF:** 1221 bp

**Locus ID:** 64224

**UniProt ID:** [Q9BSE4](#)

**Cytogenetics:** 7p14.2

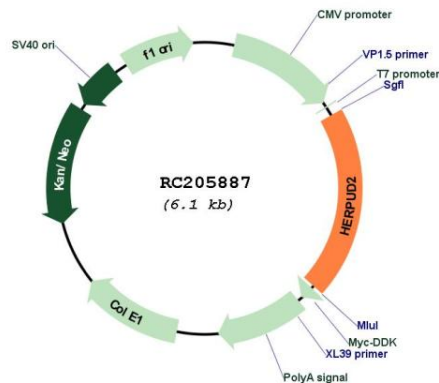
**Domains:** UBQ

**Protein Families:** Druggable Genome, Transmembrane

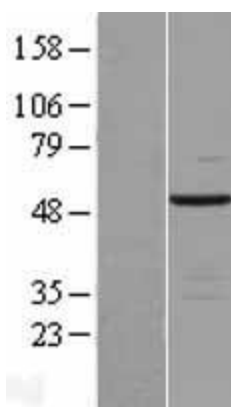
**MW:** 45.2 kDa

**Gene Summary:** Could be involved in the unfolded protein response (UPR) pathway.[UniProtKB/Swiss-Prot Function]

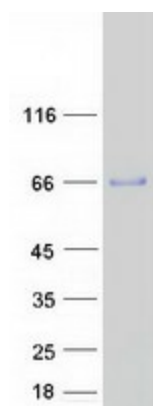
### Product images:



Circular map for RC205887



Western blot validation of overexpression lysate (Cat# [LY411694]) using anti-DDK antibody (Cat# [TA50011-100]). Left: Cell lysates from untransfected HEK293T cells; Right: Cell lysates from HEK293T cells transfected with RC205887 using transfection reagent MegaTran 2.0 (Cat# [TT210002]).



Coomassie blue staining of purified HERPUD2 protein (Cat# [TP305887]). The protein was produced from HEK293T cells transfected with HERPUD2 cDNA clone (Cat# RC205887) using MegaTran 2.0 (Cat# [TT210002]).