

## Product datasheet for **RC205885**

### ZNF480 (NM\_144684) Human Tagged ORF Clone

#### Product data:

Product Type:	Expression Plasmids
Product Name:	ZNF480 (NM_144684) Human Tagged ORF Clone
Tag:	Myc-DDK
Symbol:	ZNF480
Mammalian Cell Selection:	Neomycin
Vector:	pCMV6-Entry (PS100001)
E. coli Selection:	Kanamycin (25 ug/mL)



[View online »](#)

**ORF Nucleotide Sequence:**

>RC205885 ORF sequence  
 Red=Cloning site Blue=ORF Green=Tags(s)

TTTTGTAATACGACTCACTATAGGGCGGCCGGAATTCGTCGACTGGATCCGGTACCGAGGAGATCTGCC  
 GCC**CGGATCGCC**

ATGGCTCTTCTCAGGGACACTTAACATTCAGGGACGTGGCCATAGAATTCTCTCAGGCGGAGTGAAAT  
 GCCTGGACCCCTGCACAGAGGGCTTTATACAAGGATGTGATGTTGGAGAACTACAGGAACCTGGTCTCCCT  
 GGGAACTCTCTTCTGACCTGAATATTAACCTCATGTTGGAGCAAAGGAGGGAGCCCTGGTCTGGTGAG  
 AGTGAAGTGAAAAAGCAAAAAATTCAGATGGGAGGGAGTGCATCAAAGGTGTGAACACAGGGAGCAGCT  
 ATGCATTGGGAAGCAATGCAGAAGACAAACCAATTAATAAACAACCTGGAGTATCCTTTCACTTACATCT  
 GTCTGAACTGGAGCTATTTCCAGATGAAAGGTAATAATGGATGTAATCAAGTTGAAAACCTTTATCAAC  
 CACAGTTCCTCTGTTTCTGTCTTCAAGAAATGTCTCCAGTGTCAAACCCCATTTTTAATAGGAATG  
 ATTTTGATGATTCTTCTTTCTCCACAAGAACAGAAAGTACACCTTAGAGAAAAACCTTATGAATGTA  
 TGAGCATAGCAAAGTCTTAGAGTATCTCCAGCCTTACTAAACATCAAGTAATCCATATCTAGAGAAA  
 CCTTACAAATGTAATTCATGCGCAAGGCTTTAGTGCGAATTCGCACCTTGCGAACATTGTAGAAATC  
 ATACTGGAGAGAAACCTTACAAATGTAATGTCTGTGGCAAGGTTTTAGTTACAATTCAAACTTTGCACG  
 ACATCAAAGAATTCATACCAGAGAGAAGCCGTATGAATGTAATGAATGTGGTAAAGTCTTCAGTAATAAT  
 TCTTACCTTGACGACATCAAAGAATTCATGCTGAAGAGAAAACCTTACAAATGTAATGAATGTGGTAAAG  
 GCTTCAGTCATAAGTCATCTCTAGCAAATCATTGGAGAATTTACTGGAGAGAAGCCTTACAAATGTGA  
 TGAATGTGGCAAGGCCTTCTATAGGATTGCGCTCCTTGTACGACATCAGAAAATTCATACTGGAGAGAAA  
 CCTTACAAATGTAATGAATGTGGAAAGGCTTTATTCAAATTCGCACCTAGCACAACTTGGAGAATTC  
 ATACAGGAGAGAAAACCTTACAAATGTAATGAATGTGGAAAAGTATTTAATCAACTTCAAATCTTGCACG  
 ACATCGAAGAATTCATACTGGAGAGAAGCCTTACAAATGTAATGAATGTGGTAAAGCATTAGTGAAT  
 TCAGGCCCTTTCAGCCCATCTTGAATCCACACTGGAGAGAAGCCTTACAAATGTAGTGAATGTGGCAAGG  
 CATTTCAGACACAAGTTATCACTAACCAATCATCAGAGAATCCATACTGGAGAAAAGACCTTACAAATGTAA  
 TGAATGTGGCAAGGCTTCAATCGAATTCACACCTTGCACGACATCGGAAAATTCATACTGGAGAGAAA  
 CCTTACAAATGTAATGAGTGTGGCAAGGCCTTGTAGTGCATTTACATCTAGCACAACTTGGACAATTC  
 ATATGGGA

**ACGCGT**ACGCGGCCGCTCGAGCAGAAACTCATCTCAGAAGAGGATCTGGCAGCAAATGATATCTGGATT  
 ACAAGGATGACGACGATAAGGTTTAA

**Protein Sequence:**

>RC205885 protein sequence  
 Red=Cloning site Green=Tags(s)

MALPQGHLTFRDVAIEFSQAWEKCLDPAQRALYKDVMLENYRNLVSLGISLPDLNINSMLEQRREPWSGE  
 SEVKIAKNSDGRECIKGVNTGSSYALGSAEDKPIKKQLGVSFHLHLSELELFPDERVINGCNQVENFIN  
 HSSSVSCLQEMSSVKTPIFNRNDFDSSFLPQEQQVHLREKPYECNEHSKVFVSSSLTKHQVIHTVEK  
 PYKCNCSGKVF SRNSHLAEHCRIHTGEKPYKCNVCGKVF SYNSNFARHQR IHTREKPYECNECGKVF SNN  
 SYLARHQRIHAEKPYKNECGKGF SHKSSL ANHWRIYTGKPYKCECGKAFYRIALLVRHQIHTGEK  
 PYKNECGKVF IQNSHLAQHWRIHTGEKPYKNECGKVF NQLSNLARHRIHTGEKPYKNECGKAFSEY  
 SGLSAHLVIHTGEKPYKCECGKAFRHKLSL TNHQRIHTGERPYKNECGKVFNR IAHLARHRIHTGEK  
 PYKNECGKAFSRISYLAQHWTIHMG

**TR**TRPLEQKLI SEEDLAANDILDYKDDDDKV

**Chromatograms:**

[https://cdn.origene.com/chromatograms/mk6433\\_a03.zip](https://cdn.origene.com/chromatograms/mk6433_a03.zip)

**Restriction Sites:**

Sgfl-Mlul

**Cloning Scheme:**

Cloning sites used for ORF Shutting:



\* The last codon before the Stop codon of the ORF

**ACCN:** NM\_144684

**ORF Size:** 1548 bp

**OTI Disclaimer:** The molecular sequence of this clone aligns with the gene accession number as a point of reference only. However, individual transcript sequences of the same gene can differ through naturally occurring variations (e.g. polymorphisms), each with its own valid existence. This clone is substantially in agreement with the reference, but a complete review of all prevailing variants is recommended prior to use. [More info](#)

**OTI Annotation:** This clone was engineered to express the complete ORF with an expression tag. Expression varies depending on the nature of the gene.

**Components:** The ORF clone is ion-exchange column purified and shipped in a 2D barcoded Matrix tube containing 10ug of transfection-ready, dried plasmid DNA (reconstitute with 100 ul of water).

- Reconstitution Method:**
1. Centrifuge at 5,000xg for 5min.
  2. Carefully open the tube and add 100ul of sterile water to dissolve the DNA.
  3. Close the tube and incubate for 10 minutes at room temperature.
  4. Briefly vortex the tube and then do a quick spin (less than 5000xg) to concentrate the liquid at the bottom.
  5. Store the suspended plasmid at -20°C. The DNA is stable for at least one year from date of shipping when stored at -20°C.

**Note:** Plasmids are not sterile. For experiments where strict sterility is required, filtration with 0.22um filter is required.

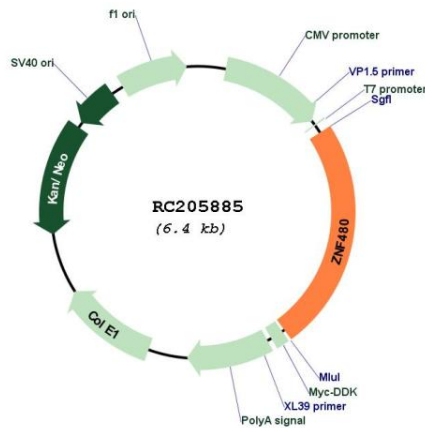
**RefSeq:** [NM\\_144684.1](#), [NP\\_653285.1](#)
**RefSeq Size:** 4767 bp

**RefSeq ORF:** 1608 bp

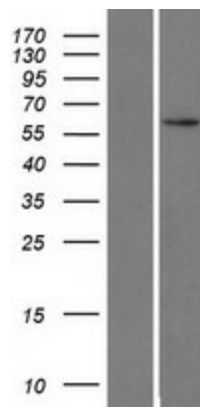
**Locus ID:** 147657

**UniProt ID:** [Q8WV37](#)  
**Cytogenetics:** 19q13.41  
**Domains:** KRAB, zf-C2H2  
**Protein Families:** Transcription Factors  
**MW:** 59.5 kDa  
**Gene Summary:** Involved in transcriptional regulation as an activator.[UniProtKB/Swiss-Prot Function]

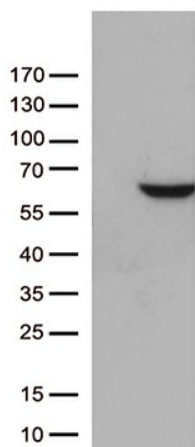
**Product images:**



Circular map for RC205885



Western blot validation of overexpression lysate (Cat# [LY408222]) using anti-DDK antibody (Cat# [TA50011-100]). Left: Cell lysates from untransfected HEK293T cells; Right: Cell lysates from HEK293T cells transfected with RC205885 using transfection reagent MegaTran 2.0 (Cat# [TT210002]).



HEK293T cells were transfected with the pCMV6-ENTRY control (Cat# [PS100001], Left lane) or pCMV6-ENTRY ZNF480 (Cat# RC205885, Right lane) cDNA for 48 hrs and lysed. Equivalent amounts of cell lysates (5 ug per lane) were separated by SDS-PAGE and immunoblotted with anti-ZNF480 (Cat# [TA812669])(1:500). Positive lysates [LY408222] (100ug) and [LC408222] (20ug) can be purchased separately from OriGene.