

## Product datasheet for **RC205879**

### **SNX33 (NM\_153271) Human Tagged ORF Clone**

#### **Product data:**

|                           |  |
|---------------------------|--|
| Product Type:             | Expression Plasmids                      |
| Product Name:             | SNX33 (NM_153271) Human Tagged ORF Clone |
| Tag:                      | Myc-DDK                                  |
| Symbol:                   | SNX33                                    |
| Synonyms:                 | SH3PX3; SH3PXD3C; SNX30                  |
| Mammalian Cell Selection: | Neomycin                                 |
| Vector:                   | pCMV6-Entry (PS100001)                   |
| E. coli Selection:        | Kanamycin (25 ug/mL)                     |



[View online »](#)

**ORF Nucleotide Sequence:**

>RC205879 ORF sequence  
 Red=Cloning site Blue=ORF Green=Tags(s)

TTTTGTAATACGACTCACTATAGGGCGGCCGGAATTCGTCGACTGGATCCGGTACCGAGGAGATCTGCC  
 GCC**CGGATCGCC**

ATGGCACTGAAAGCCGAGCCCTCTATGACTTTACAGTGAGAACAAGGAGGAAATCAGCATCCAGCAGG  
 ATGAGGACCTGGTCATCTTTAGCGAGACCTCACTGGATGGCTGGCTGCAGGGCCAGAACAGCCGTGGGGA  
 GACAGGGCTCTTTCTGCCTCTTATGTGGAGATCGTCCGTTCTGGCATCAGCACCAACCATGCTGACTAC  
 TCCAGCAGCCCTGCAGGCTCTCCCGAGCCAGGTGAGCTTGTACAACAGCCCCAGTGTGGCCAGCCAG  
 CTAGGAGTGGTGGGGCAGTGGCTTCTCTCAAACAGGGTAGCTTTGAGGAGGATGATGATGACTG  
 GGATGACTGGGACGACGGATGCACAGTGGTGGAGGAGCCACGGGCTGGTGGGCTGGGCACCAACGGGCAC  
 CCTCCCCTCAACCTCTCCTACCCTGGTGCCTACCCAGCCAGCACATGGCCTTCCGGCCCAAGCCACCAC  
 TGGAGCGGCAGGACGCCTGGCATCTGCCAAGCGAGGCAGTGTGGTGGCCGTAACCTCAACCGTTTCTC  
 ATGCTTTGTGCGTCTGGAGTGGAGGCCTTCATCTGGGTGATGTGCCATGATGGCCAAGATCGCTGAG  
 ACATACTCCATTGAAATGGGCCCTCGTGGCCCCAGTGGAAAGCCAATCCCACCCATTTGCCTGCCTCTG  
 TGGAGGACCCCAAAAACAGACCAAAATCAAGGGCATCAAAAGCTACATCTCCTACAAGCTCACACCCAC  
 CCATGCTGCCTCACCCGCTACCCGGCGCTACAAACACTTTGACTGGCTCTATAACCGCCTGCTACACAAG  
 TTCACTGTCTATCTCGGTGCCCACTGCCTGAGAAGCAGGCCACTGGCCGCTTCGAGGAGGACTTCATCG  
 AAAAGCGGAAGCGGAGACTCATCTCTGGATGGACCACATGACCAGCCACCCTGTGCTCTCCAGTACGA  
 AGGCTTCCAGCATTTCTCAGCTGCCTGGATGACAAGCAGTGAAGATGGGCAACCGCCGGCGGAGAAG  
 GATGAGATGGTGGTGCCAGCTTCTGCTCACCTCCAGATCCCCACCGAGCACCAGGACTTGCAGGACG  
 TGGAAGATCGCGTGGACACTTTCAAGGCCTTCAGTAAGAAGATGGACGACAGCGTCTGCAGCTCAGCAC  
 TGTGGCATCAGAGCTGGTGCCTAAACATGTGGGGGCTTCCGCAAGGAATTCAGAAGCTGGGCAGTGCC  
 TTCAGGCCATCAGTCATTCTTCCAGATGGACCCCCCTTTTGTCTGAGGCCCTCAACAGTGCATTT  
 CTCACACGGGCGCTACCTATGAAGCCATCGGGGAGATGTTTGTGAGCAGCCAAAGAATGACCTCTTCCA  
 GATGCTGGACACACTGTCTCTACCAGGGCTGCTCTCCAACCTCCCTGACATCATCCATCTACAAAAA  
 GGCGCCTTCGCCAAGGTGAAGGAGAGCCAAACGCATGAGTGACGAGGGCCGATGGTGCAGGACGAGGCAG  
 ACGGCATTCGCAGGCGTCCCGTGGTGGTTTCGCCCTGCAGGCCGAGATGAACCACTCCACCAGCG  
 CCGTGAGCTCGACTTCAAGCACATGATGCAGAACTACTGCGCCAGCAGATCCTCTTCTACCAGCGGGT  
 GCCAGCAGCTGGAGAAGACCCTGCGCATGTATGACAACCTC

**ACGCGT**ACGCGGGCCGCTCGAGCAGAAACTCATCTCAGAAGAGGATCTGGCAGCAAATGATATCCTGGATT  
 ACAAGGATGACGACGATAAGGTTTAA

**Protein Sequence:**

>RC205879 protein sequence  
 Red=Cloning site Green=Tags(s)

MALKGRALYDFHSENKEEISIQQDEDLVIFSETSLDGWLQGNRSRGETGLFPASYVEIVRSGISTNHADY  
 SSSPAGSPGAQVSLYNPSVASPARSGGSGFLSNQGSFEEDDDDDWDDWDDGCTVVEEPRAGGLTNGH  
 PPLNLSYPGAYPSQHMAFRPKPLERQDSLASAKRGSVGRNLNRFSCFVRSVVEAFILGDVPMMAKIAE  
 TYSIEMGRGPQWKANPHFACSVEDPTKQTKFKGKISYISYKLTPTHAASPVYRRYKHFDFWLYNRLHK  
 FTVISVPHLPEKQATGRFEEDFIEKRKRLILWMDHMTSHPVLSQYEGFQHFLSCLDDKQWKMGRRAEK  
 DEMV GASFLTFQIPTEHQDLQDVEDRVDTFKAFSKKMDDSVLQLSTVASELVRKHVGGFRKEFQKLGSA  
 FQAI SHSFQMDPPFCSEALNSAISHTGRTYEAI GEMFAEQPKNDLFQMLDTLSL YQGLLSNFPDI IHLQK  
 GAF AKVKE SQRMSDEGRMVQDEADGIRRRCRVVG FALQAEMNHFHQRRELD FKHM MQNYLRQQILFYQRV  
 GQQLEKTLRMYDNL

**TR**TRPLEQKLISEEDLAANDILDYKDDDDKV

**Chromatograms:**

[https://cdn.origene.com/chromatograms/mk6564\\_b12.zip](https://cdn.origene.com/chromatograms/mk6564_b12.zip)

**Restriction Sites:**

Sgfl-Mlul

**Cloning Scheme:**


**ACCN:** NM\_153271

**ORF Size:** 1722 bp

**OTI Disclaimer:** Due to the inherent nature of this plasmid, standard methods to replicate additional amounts of DNA in E. coli are highly likely to result in mutations and/or rearrangements. Therefore, OriGene does not guarantee the capability to replicate this plasmid DNA. Additional amounts of DNA can be purchased from OriGene with batch-specific, full-sequence verification at a reduced cost. Please contact our customer care team at [custsupport@origene.com](mailto:custsupport@origene.com) or by calling 301.340.3188 option 3 for pricing and delivery.

The molecular sequence of this clone aligns with the gene accession number as a point of reference only. However, individual transcript sequences of the same gene can differ through naturally occurring variations (e.g. polymorphisms), each with its own valid existence. This clone is substantially in agreement with the reference, but a complete review of all prevailing variants is recommended prior to use. [More info](#)

**OTI Annotation:** This clone was engineered to express the complete ORF with an expression tag. Expression varies depending on the nature of the gene.

**Components:** The ORF clone is ion-exchange column purified and shipped in a 2D barcoded Matrix tube containing 10ug of transfection-ready, dried plasmid DNA (reconstitute with 100 ul of water).

- Reconstitution Method:**
1. Centrifuge at 5,000xg for 5min.
  2. Carefully open the tube and add 100ul of sterile water to dissolve the DNA.
  3. Close the tube and incubate for 10 minutes at room temperature.
  4. Briefly vortex the tube and then do a quick spin (less than 5000xg) to concentrate the liquid at the bottom.
  5. Store the suspended plasmid at -20°C. The DNA is stable for at least one year from date of shipping when stored at -20°C.

**Note:** Plasmids are not sterile. For experiments where strict sterility is required, filtration with 0.22um filter is required.

**RefSeq:** [NM\\_153271.2](#)

**RefSeq Size:** 3250 bp

**RefSeq ORF:** 1725 bp

**Locus ID:** 257364

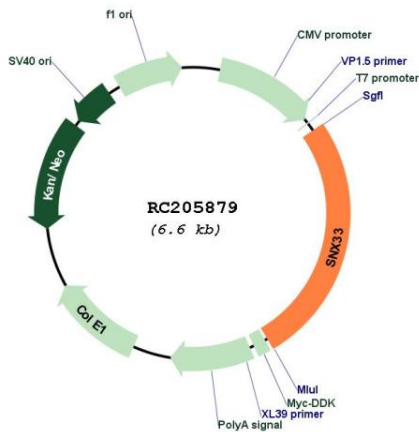
**UniProt ID:** [Q8WV41](#)

**Cytogenetics:** 15q24.2

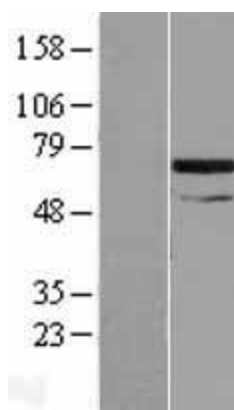
**MW:** 65.3 kDa

**Gene Summary:** The protein encoded by this gene is involved in cytoskeletal reorganization, vesicle trafficking, endocytosis, and mitosis. The encoded protein is essential for the creation of the cleavage furrow during mitosis and for completion of mitosis. Two transcript variants encoding different isoforms have been found for this gene. [provided by RefSeq, Dec 2015]

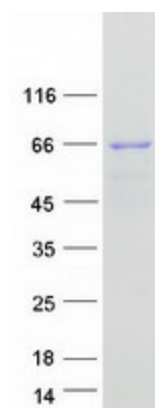
**Product images:**



Circular map for RC205879



Western blot validation of overexpression lysate (Cat# [LY407121]) using anti-DDK antibody (Cat# [TA50011-100]). Left: Cell lysates from untransfected HEK293T cells; Right: Cell lysates from HEK293T cells transfected with RC205879 using transfection reagent MegaTran 2.0 (Cat# [TT210002]).



Coomassie blue staining of purified SNX33 protein (Cat# [TP305879]). The protein was produced from HEK293T cells transfected with SNX33 cDNA clone (Cat# RC205879) using MegaTran 2.0 (Cat# [TT210002]).