

Product datasheet for **RC205877**

IFI30 (NM_006332) Human Tagged ORF Clone

Product data:

Product Type:	Expression Plasmids
Product Name:	IFI30 (NM_006332) Human Tagged ORF Clone
Tag:	Myc-DDK
Symbol:	IFI30
Synonyms:	GILT; IFI-30; IP-30; IP30
Mammalian Cell Selection:	Neomycin
Vector:	pCMV6-Entry (PS100001)
E. coli Selection:	Kanamycin (25 ug/mL)
ORF Nucleotide Sequence:	>RC205877 ORF sequence Red=Cloning site Blue=ORF Green=Tags(s)

TTTTGTAATACGACTCACTATAGGGCGCCGGGAATTCGTCGACTGGATCCGGTACCGAGGAGATCTGCC
GCC**CGATCGCC**

ATGACCCTGTCGCCACTTCTGCTGTTCTGCCACCGCTGCTGCTGCTGGACGTCCCCACGGCGGCGG
TGCAGGCGTCCCCTCTGCAAGCGTTAGACTTCTTTGGGAATGGGCCACCAGTTAACTACAAGACAGGCAA
TCTATACCTGCGGGGGCCCCTGAAGAAGTCCAATGCACCGCTTGTCAATGTGACCCTCTACTATGAAGCA
CTGTGCGGTGGCTGCCGAGCCTTCTGATCCGGGAGCTTCCCAACATGGCTGTTGGTCATGGAGATCC
TCAATGTCACGCTGGTGCCTACGAAAACGCACAGGAACAAAATGTCAGTGGCAGGTGGGAGTTCAAGTG
CCAGCATGGAGAAGAGGAGTCAAATTCACAAGTGGAGGCCTGCGTGTGGATGAACTTGACATGGAG
CTAGCCTTCTGACCAATTGTCTGCATGGAAGAGTTTGAGGACATGGAGAGAAGTCTGCCACTATGCCTGC
AGCTCTACGCCCCAGGGCTGTCGCCAGACACTATCATGGAGTGTGCAATGGGGGACCGGGCATGCAGCT
CATGCACGCCAACGCCAGCGGACAGATGCTCTCCAGCCACCACAGGATATGTGCCCTGGGTCACCGTC
AATGGGAAACCCTTGGAAGATCAGACCCAGCTCCTTACCCTTGTCTGCCAGTTGTACCAGGGCAAGAAGC
CGGATGTCTGCCCTTCTCAACCAGCTCCCTCAGGAGTGTTCCTCAAG

ACGCGTACGCGGCCGCTCGAGCAGAACTCATCTCAGAAGAGGATCTGGCAGCAAATGATATCCTGGATT
ACAAGGATGACGACGATAAGGTTTAA



[View online »](#)

Protein Sequence: >RC205877 protein sequence
 Red=Cloning site Green=Tags(s)

MTLSPLLLFLPPLLLLLDVPTAAVQASPLQALDFFGNGPPVNYKTGNLYLRGPKKSNAPLVNVTLYEALCGGCRAFLIRELFPTWLLVMEILNVTLPYGNAAEQNVSGRWEFKCQHGEIECKFNKVEACVLDELDMELAFLLTIVCMEEFEDMERSLPLCLQLYAPGLSPDTIMECAMGDRGMQLMHANAQRD DALQPPHEYVPWVTVNGKPLEDQTQLLTLVCQLYQGGKPDVCPSSSTSSLRVCFK

TRTRPLEQKLISEEDLAANDILDYKDDDDKV

Chromatograms: https://cdn.origene.com/chromatograms/mk6066_c04.zip

Restriction Sites: SgfI-MluI

Cloning Scheme:

Cloning sites used for ORF Shuttling:



* The last codon before the Stop codon of the ORF

ACCN: NM_006332

ORF Size: 750 bp

OTI Disclaimer: The molecular sequence of this clone aligns with the gene accession number as a point of reference only. However, individual transcript sequences of the same gene can differ through naturally occurring variations (e.g. polymorphisms), each with its own valid existence. This clone is substantially in agreement with the reference, but a complete review of all prevailing variants is recommended prior to use. [More info](#)

OTI Annotation: This clone was engineered to express the complete ORF with an expression tag. Expression varies depending on the nature of the gene.

Components: The ORF clone is ion-exchange column purified and shipped in a 2D barcoded Matrix tube containing 10ug of transfection-ready, dried plasmid DNA (reconstitute with 100 ul of water).

Reconstitution Method:

1. Centrifuge at 5,000xg for 5min.
2. Carefully open the tube and add 100ul of sterile water to dissolve the DNA.
3. Close the tube and incubate for 10 minutes at room temperature.
4. Briefly vortex the tube and then do a quick spin (less than 5000xg) to concentrate the liquid at the bottom.
5. Store the suspended plasmid at -20°C. The DNA is stable for at least one year from date of shipping when stored at -20°C.

Note: Plasmids are not sterile. For experiments where strict sterility is required, filtration with 0.22um filter is required.

RefSeq: [NM_006332.5](#)

RefSeq Size: 1034 bp

RefSeq ORF: 753 bp

Locus ID: 10437

UniProt ID: [P13284](#)

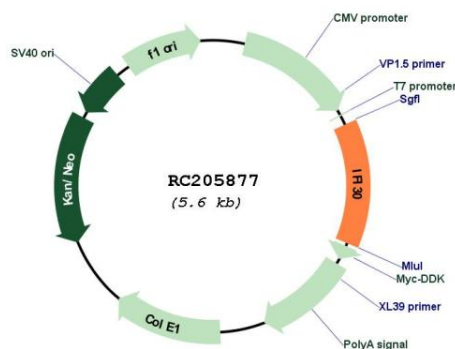
Cytogenetics: 19p13.11

Protein Pathways: Antigen processing and presentation

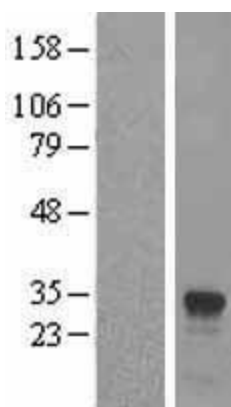
MW: 28 kDa

Gene Summary: The protein encoded by this gene is a lysosomal thiol reductase that at low pH can reduce protein disulfide bonds. The enzyme is expressed constitutively in antigen-presenting cells and induced by gamma-interferon in other cell types. This enzyme has an important role in MHC class II-restricted antigen processing. [provided by RefSeq, Jul 2008]

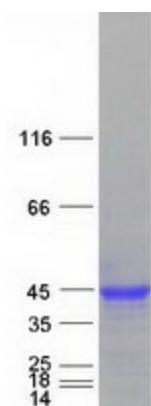
Product images:



Circular map for RC205877



Western blot validation of overexpression lysate (Cat# [LY416719]) using anti-DDK antibody (Cat# [TA50011-100]). Left: Cell lysates from untransfected HEK293T cells; Right: Cell lysates from HEK293T cells transfected with RC205877 using transfection reagent MegaTran 2.0 (Cat# [TT210002]).



Coomassie blue staining of purified IFI30 protein (Cat# [TP305877]). The protein was produced from HEK293T cells transfected with IFI30 cDNA clone (Cat# RC205877) using MegaTran 2.0 (Cat# [TT210002]).