

## Product datasheet for **RC205876**

### **CNTROB (NM\_053051) Human Tagged ORF Clone**

#### **Product data:**

Product Type:	Expression Plasmids
Product Name:	CNTROB (NM_053051) Human Tagged ORF Clone
Tag:	Myc-DDK
Symbol:	CNTROB
Synonyms:	LIP8; PP1221
Mammalian Cell Selection:	Neomycin
Vector:	pCMV6-Entry (PS100001)
E. coli Selection:	Kanamycin (25 ug/mL)



[View online »](#)

**ORF Nucleotide Sequence:**

>RC205876 ORF sequence  
 Red=Cloning site Blue=ORF Green=Tags(s)

TTTTGTAATACGACTCACTATAGGGCGGCCGGAATTCGTCGACTGGATCCGGTACCGAGGAGATCTGCC  
 GCC**CGGATCGCC**

ATGGCAACATCAGCTGACAGCCCCAGTTACCCCTCGGGCGGAGGATCTCTGAGTGATTATCAGAAC  
 CCCTGGGCTCAACCAAGTGTCTGTAAGTGACTCCCAGCTCTATGCTTCTTTGCGCCTCAGCCGGCA  
 GGCGGAGGCCACGGCCGAGCCAGCTGTATTTACCCTCCACCTCCCGCCTCATGAAGGTTAGACGGC  
 TTCGCCAAGAATTGAGTCGAAGCTTGTGAGTCGGATTGGAAAAGAACTGAAGAAAAAGGATGGTTCTA  
 AGCATATCTTTGAGATGGAAAGTGTTCGGGTCAGCTCCAGACCATGCTCCAAACCTCACGTGATACAGC  
 CTATCGGGATCCTCTATTCTGGCGCTGGCTCAGAGAGACGGGAAGAGGACTCCTTTGACAGTGATAGC  
 ACAGCCACCTTGCTCAACACCCGGCCCTGCAAGACTTGTCTCCATCTAGCTCAGCCAAGCCCTGGAGG  
 AGCTGTTTCCCGCTACACCAGCCTTCGGCCAGGGCTCCACTCAATCCCCAGATTTTCAGGGGCTGAG  
 AGATGCATTGGATTAGAGCATACCCGCCGAAGCATTGTGAGCGCCATATTCAGAGCCTGCAGACCCGA  
 GTGTTAGAGCTACAGCAACAATTAGCCGTGGCTGTGGCTGCCGACCGCAAGAAAGATAACCATGATTGAAC  
 AACTGGACAAGACCCCTGGCCCGTGTGGTGGAGGCTGGAACCGGCATGAGGCTGAGCGGACAGAGTTCT  
 CAGGGGACTTCAAGAGGAACACCAGGCAGCAGAGCTCACCAGAAGCAAGCAGCAGGAGACAGTAACCCGC  
 CTGGAACAAAGCCTTTCTGAGGCCATGGAGGCCCTGAATCGTGAGCAGGAAAGTGCCAGACTGCAGCAAC  
 GGGAAAGAGAGACTGGAGGAGGAAAGCAAGCTCTGACTCTGAGGTTGGAGGCAGAACAGCAGCGGTG  
 CTGTGTCTGCAGGAAGAGCGGGATGCAGCTCGGGCTGGCAACTGAGTGAGCATCGAGAGTTGGAGACT  
 CTTCCGGCTGCCCTAGAAGAAGAACGGCAGACTGGGCCAGCAAGAGCACCAGCTTAAGGAACACTACC  
 AGCGCTGCAGGAGGAGAGCCAGGCTCAGCTGGAAGGGAGAAGGAGAAGAGCCAGAGGGAAAGCCAGGC  
 CGCCTGGGAGACCCAGCACCAGTTGGCATTGGTGCAGTCTGAGGTGCGGGCTGGAAGGAGAGCTGGAT  
 ACAGCTCGGAGAGAGAGATGCCTGCAGCTGGAATGAGCTTGGTGCAGGCCCGGTATGAAAGCCAGC  
 GGATCCAGCTGGAGTCGGAGCTGGCTGTGCAGCTGGAGCAGCGGGTGACAGAGCGGCTGGCGCAGGCTCA  
 GGAGAGCAGCCTACGGCAAGCAGCCTCCCTCAGGGAACATCACAGGAAGCAGCTGCAGGACCTGAGTGGA  
 CAGCACCAGCAGGAGCTGGCCAGTCAGCTAGCTCAGTTCAAGGTGGAATGGCAGAACGAGAGGAACGGC  
 AACAGCAGGTGGCTGAGGACTACGAGCTCAGACTGGCCCGGAGCAAGCGCAGTGTGCGAACTGCAGAG  
 TGGGAACCAGCAGCTGGAGGAGCAGCGGTGGAGCTGGTGGAAAGACTGCAGGCCATGCTGCAGGCCAC  
 TGGGATGAGGCCAACAGCTGCTCAGCACCCTCTCCCGCGCCCAACCTCCAGCTCCTCTGCTGGAC  
 CCTCCAGCCCCGGCCTCAGGAGCCGAGAAGGAGGAGAGGGTCTGGACTATGCCTCCCATGGCCGT  
 GGCCCTGAAGCCTGTATTGCAGCAGAGCCGGAAGCAAGGGACGAGCTACCTGGAGCGCCTCCTGTCTT  
 TGCAGTTCCTCCTCAGATCTTAGCCTCCTGTTGGGCCCTCTTTTCAGAGCCAGCATTCTTTCCAGCCCC  
 TGGAGCCCAAACAGACCTCACTTCATCCACAGCTGGGGCCTTCTCTGCAGTTGGGGCCTTCCATCCCGA  
 TCATAGGGCAGAAAGGCCATTCCCTGAGGAAGATCCTGGACCTGACGGGGAGGGCCTCCTAAAGCAAGGG  
 CTGCCGCTGCTCAGCTGGAGGGCCTCAAGAATTTTTGCACCAGTTGCTGGAGACAGTCCCCAGAACA  
 ATGAGAACCCTTCTGTCGACCTGTTGCCCTAAGTCTGGTCTCTGACTGTCCATCTTGGGAGGAAGC  
 CCCTCAAGTGCCACGATTCCACCGCCTGTCCACAAAACCAAGTTCCCTTAGCCATGGCATCCAGTCTT  
 TTCCGGTCCCTGAGCCTCCCTCCTCCATTACAAGGCAGTGGTCCAGCAGTGGTTCCCAAGAGAGAG  
 GTGGAGATGGGCTTACATTTCCAAAGCAGCTGATGGAGGTGTCTCAACTGTTGCGACTCTACCAGGCTCG  
 GGGCTGGGGGCTCTGCCTGCTGAGGATCTCTGCTCTACCTGAAGAGGCTGGAACACAGCGGGACTGAT  
 GGCCGAGGGGATAATGTCCCAAGGAACACAGACTCCCGCTTGGGTGAGATCCCCGGAAGAGATTC  
 CCTCCAGGCTGTCCCTCGCCGCTTGTACAGCCCCAAGACTGAAAAACCTCCCGCACGGAAGAAAAG  
 TGGCACCCCTGCCCGAGTAGCATGAGGAGCCGGGGGGAGTCTGGAGA

**ACGCGT**ACGGCGCGCTCGAGCAGAACTCATCTCAGAAGAGGATCTGGCAGCAAATGATATCTGGATT  
 ACAAGGATGACGACGATAAGGTTTAA

**Protein Sequence:** >RC205876 protein sequence  
 Red=Cloning site Green=Tags(s)

MATSADSPSSPLGAEDLLSDSSEPPGLNQVSSEVTSQLYASLRLSRQAEATARAQLYLPSTSPHEGLDG  
 FAQELSRSLVSGLEKNLKKKDGSKHIFEMESVRGQLQTMLOTSRDTAYRDPLIPGAGSERREDSFSDSDS  
 TATLLNTRPLQDLSPSSSAQALEELFPRYTSLRPGPPLNPPDFQGLRDALDSEHTRRKHCHERHIQSLQTR  
 VLELQQQLAVAVAADRKKDTMIEQLDKTLARVVEGWNRHEAERTEVLRGLQEEHQAAELTRSKQETVTR  
 LEQSLSEAMEALNREQESARLQQRERETLEEERQALTLRLEAEQQRCCVLQEERDAARAGQLSEHRELET  
 LRAALEEERQTWAQQEHQLKEHYQALQEESSQAQLEREKEKSQREAAAWETQHQLALVQSEVRRLEGELD  
 TARRERDALQLEMSLVQARYESQRIQLESELAVQLEQRVTERLAQAQESSLRQAASLREHHRKQLQDLQSG  
 QHQQELASQLAQFKVEMAEREERQQQVAEDYELRLAREQARVCELQSGNQLEEQRVELVERLQAMLQAH  
 WDEANQLLSTTLPPPNPPAPPAGPSSPGPQEPEKEERRVWTPMPPMAVALKPVLQQSREARDELPGAPPVL  
 CSSSSDLLLGGPSFQSQHSFQPLEPKPDLTSSTAGAFSALGAFHPDHRAERPFPEEDPGPDGEGLLKQG  
 LPPAQLEGLKNFLHQLLETVPQNNENPSVDLLPPKSGPLTVPSWEEAPQVPRIPPPVHKTKVPLAMASSL  
 FRVPEPPSSHSQSGSPSSGSPERGGDGLTFPRQLMEVSQLLRLYQARGWGALPAEDLLL YLKRLEHSGTD  
 GRGDNVPRRNTSRLGEIPRKEIPSQAVPRRLATAPKTEKPPARKKSGHPAPSSMRSRGVWR

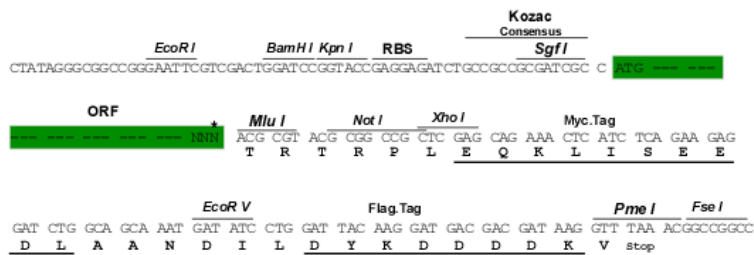
TRTRPLEQKLISEEDLAANDILDYKDDDDKV

**Chromatograms:** [https://cdn.origene.com/chromatograms/mk6202\\_h06.zip](https://cdn.origene.com/chromatograms/mk6202_h06.zip)

**Restriction Sites:** SgfI-MluI

**Cloning Scheme:**

Cloning sites used for ORF Shuttling:

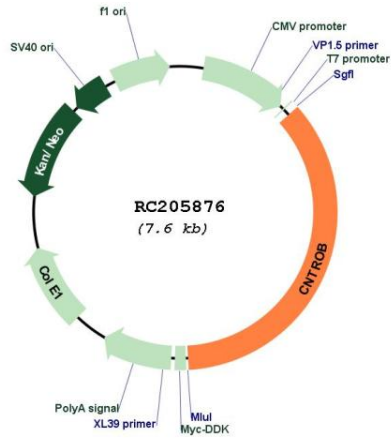


\* The last codon before the Stop codon of the ORF

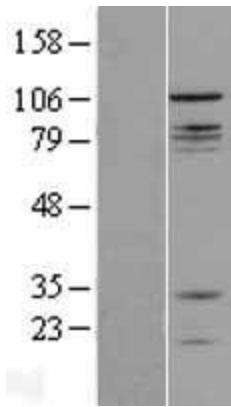
**ACCN:** NM\_053051

<b>ORF Size:</b>	2709 bp
<b>OTI Disclaimer:</b>	The molecular sequence of this clone aligns with the gene accession number as a point of reference only. However, individual transcript sequences of the same gene can differ through naturally occurring variations (e.g. polymorphisms), each with its own valid existence. This clone is substantially in agreement with the reference, but a complete review of all prevailing variants is recommended prior to use. <a href="#">More info</a>
<b>OTI Annotation:</b>	This clone was engineered to express the complete ORF with an expression tag. Expression varies depending on the nature of the gene.
<b>Components:</b>	The ORF clone is ion-exchange column purified and shipped in a 2D barcoded Matrix tube containing 10ug of transfection-ready, dried plasmid DNA (reconstitute with 100 ul of water).
<b>Reconstitution Method:</b>	<ol style="list-style-type: none"><li>1. Centrifuge at 5,000xg for 5min.</li><li>2. Carefully open the tube and add 100ul of sterile water to dissolve the DNA.</li><li>3. Close the tube and incubate for 10 minutes at room temperature.</li><li>4. Briefly vortex the tube and then do a quick spin (less than 5000xg) to concentrate the liquid at the bottom.</li><li>5. Store the suspended plasmid at -20°C. The DNA is stable for at least one year from date of shipping when stored at -20°C.</li></ol>
<b>RefSeq:</b>	<a href="#">NM_053051.5</a>
<b>RefSeq Size:</b>	4071 bp
<b>RefSeq ORF:</b>	2712 bp
<b>Locus ID:</b>	116840
<b>UniProt ID:</b>	<a href="#">Q8N137</a>
<b>Cytogenetics:</b>	17p13.1
<b>MW:</b>	101.3 kDa
<b>Gene Summary:</b>	This gene encodes a centrosomal protein that interacts with BRCA2, and is required for centriole duplication and cytokinesis. Alternatively spliced transcript variants encoding different isoforms have been described for this gene. [provided by RefSeq, Aug 2011]

Product images:



Circular map for RC205876



Western blot validation of overexpression lysate (Cat# [LY403286]) using anti-DDK antibody (Cat# [TA50011-100]). Left: Cell lysates from untransfected HEK293T cells; Right: Cell lysates from HEK293T cells transfected with RC205876 using transfection reagent MegaTran 2.0 (Cat# [TT210002]).