

Product datasheet for **RC205875**

SMAP2 (NM_022733) Human Tagged ORF Clone

Product data:

Product Type:	Expression Plasmids
Product Name:	SMAP2 (NM_022733) Human Tagged ORF Clone
Tag:	Myc-DDK
Symbol:	SMAP2
Synonyms:	SMAP1L
Mammalian Cell Selection:	Neomycin
Vector:	pCMV6-Entry (PS100001)
E. coli Selection:	Kanamycin (25 ug/mL)



[View online »](#)

ORF Nucleotide Sequence:

>RC205875 ORF sequence
 Red=Cloning site Blue=ORF Green=Tags(s)

TTTTGTAATACGACTCACTATAGGGCGGCCGGGAATTCGTCGACTGGATCCGGTACCGAGGAGATCTGCC
 GCC**CGGATCGCC**

ATGACAGGCAAGTCGGTGAAGGACGTGGATCGGTACCAGGCTGTCTGGCCAACCTGCTGCTGGAGGAGG
 ATAACAAGTTTTGTGCAGATTGCCAGTCTAAAGGGCCCGCATGGGCTCTTGGAACATTGGTGTTCAT
 CTGCATTTCGATGTGCTGGAATCCACAGGAATCTGGGGGTGCACATATCCAGGGTAAAGTCAGTTAACCTC
 GACCAGTGGACTCAAGAACAGATTCAAGTGCATGCAAGAGATGGGAAATGGAAAGGCAAACCGACTTTATG
 AAGCCTATCTTCTGAGACCTTTTCGGCGACCTCAGATAGACCCAGCTGTTGAAGGATTTATTCGAGACAA
 ATATGAGAAGAAGAAATACATGGACCGAAGTCTGGACATCAATGCCTTTAGGAAAGAAAAAGATGACAAG
 TGGAAAAGAGGGAGCGAACCAGTCCAGAAAAAAATTTGGAACCTGTTGTTTTGAGAAGGTGAAAAATGC
 CACAGAAAAAAGAAGACCCACAGCTACCTCGGAAAAGCTCCCGAAATCCACAGCGCCTGTCATGGATTT
 GTTGGCCTTGATGCTCCTGTGGCTGCTCCATTGCAAAATAGTAAGACCAGCAATACCCTAGAGAAGGAT
 TTAGATCTGTTGGCCTCTGTTCCATCCCCTTCTTCCGGTTCAGAAAGGTTGTAGGTTCCATGCCAA
 CTGCAGGGAGTGCCGGCTCTGTTCTGAAAATCTGAACCTGTTTCCGGAGCCAGGGAGCAAAATCAGAAGA
 AATAGGCAAGAAACAGCTCTCTAAAGACTCCATTTCTTACTGTATGGATCCCAGACGCCTCAAATGCCT
 ACTCAAGCAATGTTTCATGGCTCCCGCTCAGATGGCATACCCACAGCCTACCCAGCTTCCCGGGGTTA
 CACCTCCTAACAGCATAATGGGGAGCATGATGCCTCCACCAGTAGGCATGGTTGCTCAGCCAGGAGCTTC
 TGGGATGGTTGCCCCATGGCCATGCCTGCAGGCTATATGGGTGGCATGCAGGCATCAATGATGGGTGTG
 CCGAATGGAATGATGACCACCCAGCAGGCTGGCTACATGGCAGGCATGGCAGCTATGCCCCAGACTGTGT
 ATGGGGTCCAGCCAGCTCAGCAGCTGCAATGGAACCTTACTCAGATGACCCAGCAGATGGCTGGGATGAA
 CTCTATGGAGCCAATGGCATGATGAACTATGGACAGTCAATGAGTGGCGAAATGGACAGGCAGCAAAAT
 CAGACTCTCAGTCTCAGATGTGAAAA

ACGCGTACGCGGCCGCTCGAGCAGAACTCATCTCAGAAGAGGATCTGGCAGCAATGATATCCTGGATT
 ACAAGGATGACGACGATAAGGTTTAA

Protein Sequence:

>RC205875 protein sequence
 Red=Cloning site Green=Tags(s)

MTGKSVKDVDRYQAVLANLLLEEDNKFCAQCQSKGPRWASWNIGVVICIRCAGIHRNLGVHISRKSVNL
 DQWTQEIQCMQEMGNGKANRLYEAYLPETFRRPQIDPAVEGFIRDKYEKKKYMDRSLDINAFRKEKDDK
 WKRGESEPVPEKKLEPVVFEKVKMPQKEDPQLPRKSSPKSTAPVMDLLGLDAPVACSIANSKTSNTLEKD
 LDLLASVSPSSSGSRKVVGSMP TAGSAGSVPENLNLFPPEPGSKSEEIGKKQLSKDSILSLYGSQTPQMP
 TQAMFMAPAQMA YPTAYPSFPGVTPPNSIMGSMPPPPVGMVAQPGASGMVAPMAMPAGYMGGMQASMMGV
 PNGMNTTQQAGYMAGMAAMPQT VYGVQPAQQLQWNL TQMTQQMAGMNFYGANMNYGQSMGGNGQAAN
 QTLSPQMWK

TRTRPLEQKLISEEDLAANDILDYKDDDDKV

Chromatograms:

https://cdn.origene.com/chromatograms/mk6433_c03.zip

Restriction Sites:

Sgfl-Mlul

Cloning Scheme:


ACCN: NM_022733

ORF Size: 1287 bp

OTI Disclaimer: The molecular sequence of this clone aligns with the gene accession number as a point of reference only. However, individual transcript sequences of the same gene can differ through naturally occurring variations (e.g. polymorphisms), each with its own valid existence. This clone is substantially in agreement with the reference, but a complete review of all prevailing variants is recommended prior to use. [More info](#)

OTI Annotation: This clone was engineered to express the complete ORF with an expression tag. Expression varies depending on the nature of the gene.

Components: The ORF clone is ion-exchange column purified and shipped in a 2D barcoded Matrix tube containing 10ug of transfection-ready, dried plasmid DNA (reconstitute with 100 ul of water).

Reconstitution Method:

1. Centrifuge at 5,000xg for 5min.
2. Carefully open the tube and add 100ul of sterile water to dissolve the DNA.
3. Close the tube and incubate for 10 minutes at room temperature.
4. Briefly vortex the tube and then do a quick spin (less than 5000xg) to concentrate the liquid at the bottom.
5. Store the suspended plasmid at -20°C. The DNA is stable for at least one year from date of shipping when stored at -20°C.

Note: Plasmids are not sterile. For experiments where strict sterility is required, filtration with 0.22um filter is required.

RefSeq: [NM_022733.3](#)

RefSeq Size: 2946 bp

RefSeq ORF: 1290 bp

Locus ID: 64744

UniProt ID: [Q8WU79](#)

Cytogenetics: 1p34.2

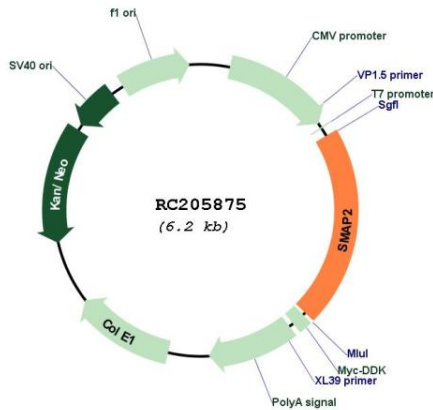
Domains: ArfGap

Protein Pathways: Endocytosis

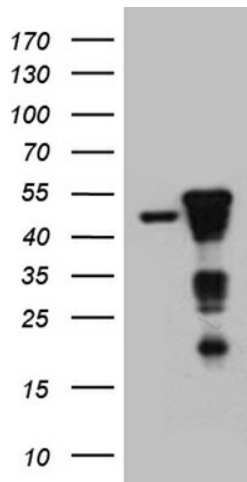
MW: 46.8 kDa

Gene Summary: GTPase activating protein that acts on ARF1. Can also activate ARF6 (in vitro). May play a role in clathrin-dependent retrograde transport from early endosomes to the trans-Golgi network (By similarity).[UniProtKB/Swiss-Prot Function]

Product images:



Circular map for RC205875



HEK293T cells were transfected with the pCMV6-ENTRY control (Cat# [PS100001], Left lane) or pCMV6-ENTRY SMAP2 (Cat# RC205875, Right lane) cDNA for 48 hrs and lysed. Equivalent amounts of cell lysates (5 ug per lane) were separated by SDS-PAGE and immunoblotted with anti-SMAP2 (Cat# [TA811191])(1:2000).