

Product datasheet for **RC205872**

FAAP24 (NM_152266) Human Tagged ORF Clone

Product data:

Product Type: Expression Plasmids
Product Name: FAAP24 (NM_152266) Human Tagged ORF Clone
Tag: Myc-DDK
Symbol: FAAP24
Synonyms: C19orf40
Mammalian Cell Selection: Neomycin
Vector: pCMV6-Entry (PS100001)
E. coli Selection: Kanamycin (25 ug/mL)
ORF Nucleotide Sequence: >RC205872 representing NM_152266
Red=Cloning site Blue=ORF Green=Tags(s)

TTTTGTAATACGACTCACTATAGGGCGCCGGGAATTCGTCGACTGGATCCGGTACCGAGGAGATCTGCC
GCC**CGATCGC**C

ATGAAAAGAACCCCTGATGATACGGGCCCGTGCACGTGCCTTTGGGCATATTGTGGCCAATGAGA
AATGGCGCGGTCACAGCTGGCGCAGGAGATGCAAGGGAAAATTAAGCTCATTTTCGAGGATGGCTTGAC
ACCAGACTTTTATCTGTGAACAGATGCTGCATTCTTTATGTCACCGAAGCTGATTTGGTGGCAGGAAAT
GGCTACAGAAAGAGGCTTGTTCCGGTTAGAAATCCAATAATCTTAAAGGAATTGTAGTCGTTGAAAAA
CCCGGATGAGTGAACAATACTTCCAGCCCTACAGAAGTTTACTGTGCTGGACCTTGAATGGTGTGCT
TCCAGTGGCCAGCCAGATGGAAGCATCCTGCCTCGTCATCCAGTTGGTCAAGAGCAAACCAAGAGCCC
AGTAAGAACCCTCTTCTCGGGAAGAAACGGGCCCTGCTGCTGTCTGAGCCTTCGCTCCTCGAACCGTGC
AGCAGATCCCAGGAGTTGGAAAAGTTAAAGCTCCCCTTCTCCTCCAGAAGTTTCCAAGCATCCAGCAACT
GAGTAATGCTTCCATTGGGGAAGTGGAGCAGGTGGTCCGACAAGCAGTGGCACAGCAGATCCATGCCTTC
TTCACGCAGCCCAGG

ACGCGTACGCGGCCGCTCGAGCAGAACTCATCTCAGAAGAGGATCTGGCAGCAAATGATATCCTGGATT
ACAAGGATGACGACGATAAGGTTTAA



[View online »](#)

Protein Sequence: >RC205872 representing NM_152266
Red=Cloning site Green=Tags(s)

MEKNPPDDTGPVHVPLGHIVANEKWRGSQLAQEMQGKIKLIFEDGLTPDFYLSNRCCILYVTEADLVAGN
 GYRKLVRVRNSNLLKGI VVVEKTRMSEQYFPALQKFTVLDLGMVLLPVASQMEASCLVIQLVQEQTKEP
 SKNPLLKGRALLLSEPSLLRVTQVQIPGVGKVKAPLLLQKFPSIQQLSNASIGELEQVVGQAVAQIHF
 FTQPR

TRTRPLEQKLISEEDLAANDILDYKDDDDKV

Chromatograms: https://cdn.origene.com/chromatograms/mg2997_g07.zip

Restriction Sites: SgfI-MluI

Cloning Scheme:



ACCN: NM_152266

ORF Size: 645 bp

OTI Disclaimer: The molecular sequence of this clone aligns with the gene accession number as a point of reference only. However, individual transcript sequences of the same gene can differ through naturally occurring variations (e.g. polymorphisms), each with its own valid existence. This clone is substantially in agreement with the reference, but a complete review of all prevailing variants is recommended prior to use. [More info](#)

OTI Annotation: This clone was engineered to express the complete ORF with an expression tag. Expression varies depending on the nature of the gene.

Components: The ORF clone is ion-exchange column purified and shipped in a 2D barcoded Matrix tube containing 10ug of transfection-ready, dried plasmid DNA (reconstitute with 100 ul of water).

Reconstitution Method:

1. Centrifuge at 5,000xg for 5min.
2. Carefully open the tube and add 100ul of sterile water to dissolve the DNA.
3. Close the tube and incubate for 10 minutes at room temperature.
4. Briefly vortex the tube and then do a quick spin (less than 5000xg) to concentrate the liquid at the bottom.
5. Store the suspended plasmid at -20°C. The DNA is stable for at least one year from date of shipping when stored at -20°C.

Note: Plasmids are not sterile. For experiments where strict sterility is required, filtration with 0.22um filter is required.

RefSeq: [NM_152266.5](#)

RefSeq Size: 1130 bp

RefSeq ORF: 648 bp

Locus ID: 91442

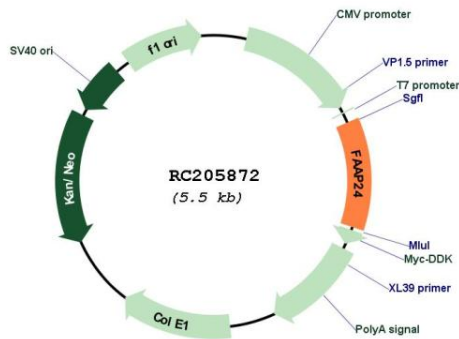
UniProt ID: [Q9BTP7](#)

Cytogenetics: 19q13.11

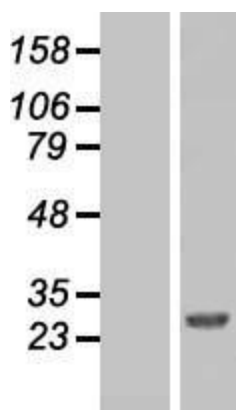
MW: 23.7 kDa

Gene Summary: FAAP24 is a component of the Fanconi anemia (FA) core complex (see MIM 227650), which plays a crucial role in DNA damage response (Ciccia et al., 2007 [PubMed 17289582]). [supplied by OMIM, Mar 2008]

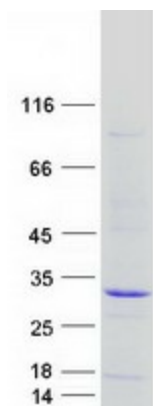
Product images:



Circular map for RC205872



Western blot validation of overexpression lysate (Cat# [LY407688]) using anti-DDK antibody (Cat# [TA50011-100]). Left: Cell lysates from untransfected HEK293T cells; Right: Cell lysates from HEK293T cells transfected with RC205872 using transfection reagent MegaTran 2.0 (Cat# [TT210002]).



Coomassie blue staining of purified FAAP24 protein (Cat# [TP305872]). The protein was produced from HEK293T cells transfected with FAAP24 cDNA clone (Cat# RC205872) using MegaTran 2.0 (Cat# [TT210002]).