

## Product datasheet for **RC205867**

### **SNAP47 (NM\_053052) Human Tagged ORF Clone**

#### **Product data:**

Product Type:	Expression Plasmids
Product Name:	SNAP47 (NM_053052) Human Tagged ORF Clone
Tag:	Myc-DDK
Symbol:	SNAP47
Synonyms:	C1orf142; ESFI5812; HEL-S-290; HEL170; SNAP-47; SVAP1
Mammalian Cell Selection:	Neomycin
Vector:	pCMV6-Entry (PS100001)
E. coli Selection:	Kanamycin (25 ug/mL)



[View online »](#)

**ORF Nucleotide Sequence:**

>RC205867 ORF sequence  
 Red=Cloning site Blue=ORF Green=Tags(s)

TTTTGTAATACGACTCACTATAGGGCGGCCGGAATTCGTCGACTGGATCCGGTACCGAGGAGATCTGCC  
 GCC**CGCATCGCC**

ATGCGCGCGGCTCGCCGCGTCTTCACTGCGCAGCGCCGAGCGCCGAGCGCCGCGGTCTGGG  
 ACTCGTCTGGCGTCCCTCAGAGGAGAAGAGCCCTGGACCTTGGCGCACAGACCCAGGAACAGATGAG  
 CAGGGATGTCTGCATCCACACCTGGCCGTGCACCTACTACCTGGAGCCAAAGAGGCGATGGTTACTGGA  
 CAGCTGTCCTAACATCGCTGTCGCTCAGGTTTCACTGACTGACAGCACTGGAGAGATTCTGGTCAGCTTCC  
 CCCTCTCCAGCATAGTTGAGATCAAGAAGGAGGCTTACATTTTATCTTCAGCTCCATCACCATCTGGA  
 GAAGGGCCATGCCAAGCACTGGTTCAGCTCCCTGCGGCCAAGTCGAAATGTGGTCTTCAGCATCATCGAG  
 CATTCTGGAGGGAGCTGCTGCTGTCTCAGCCTGGAGCCGTGGCAGACGCATCTGTCCAAGGACCCGGG  
 GCGAGGAGCTGACGGGACTCATGGCTGGATCCCAGAAACGCTGGAGGACACGGGAGGGTCTGCACCA  
 CCAGGGCCAGCAGCTGGACAGCGTCATGAGAGGCTGGACAAGATGGAGTCAGACCTGGAGTGGCGGAC  
 AGATTGCTGACAGAACTGGAATCTCCTGCTTGGTGGCCCTTTAGCTCCAAGCTTTGGAAGACACCACCGG  
 AAACAAAGCCCAGGAAGATGTCTCCATGACCAGTTGTGAACCCCTTTGGAAAGAAGGGATACTGATAAA  
 AATTCTGCTGTTATTTCCACAGAACAGAGTCTCACGTTAAACCAGGGAGGCTCACCGTCTTGTGTCT  
 GGGTTGAAAATACATGACTCCAGTCTTTGCTCATGCACAGGTTTGAAAGAGAAGACGTGGACGACATCA  
 AGGTCCACTCACCTACGAAATAGCATCCGCCAGCGGTTTATTGAAAGCCAGACATGGCCTATCGTTT  
 GATATCTGCCAAGATGCCAGAGGTTATCCCATTTTGAAGTGCAGTTCAGCAAGAAGATGGAGCTGTTA  
 GAAGATGCATTGGTGTCTCAGAAGCGCAAGAACCCTTCCCCCGCAGAGAAGAGCTGCTCAGTCTGGCATG  
 CAGCATCTGGGCTGATGGGCTGTACCTGCACCGTGAGCCACCCGAGGAGACCAGGAGGGCACAGCAGCT  
 GCACCTGCAGACAAGCCTGCCAGCCCTTCTGAGGCAGATACCCAGGAATAACCCAGATCCTGAGGAGG  
 ATGAAGGGGCTGGCCCTGGAGGCCGAGAGTGTGAGCTGGAGAGACAAGACGAAGCCCTGGATGGCGTTGCAG  
 CAGCTGTGGACAGGGCAACCTTGACCATCGACAAGCACAAAGCGGATGAAGAGGCTGACC

**ACGCGT**ACGCGGCCGCTCGAGCAGAACTCATCTCAGAAGAGGATCTGGCAGCAAATGATATCTGGATT  
 ACAAGGATGACGACGATAAGGTTTAA

**Protein Sequence:**

>RC205867 protein sequence  
 Red=Cloning site Green=Tags(s)

MRAARRGLHCAGAERPRRRGRLWDSSGVPQRQKRPWPRTQTQEQRDVCIHWPCTYYLEPKRRWVTG  
 QLSLTSLSLRFMTDSTGEILVSFPLSSIVEIKKEASHFIFSSITILEKGHAKHWFSSLRPSRNVVFSIIE  
 HFWRELLL SQPGAVADASVPRTRGEEL TGLMAGSQKRL EDTARVLHHQGGQLDSVMRGLDKMESDLEVAD  
 RLLTELESPA WPFSSKLWKT PPEKPREDSMTSCEPFK EGILIKIPAVISHRTESHVKPGRLTVLVS  
 GLEIHDSSLLMHRFEREDVDDIKVHSPYEISIRQRF IGKPD MAYRLISAKMPEV IPILEVQF SKKMELL  
 EDALVLR SARTSSPAEKSCSVWHAASGLMGCTLHREPPAGDQEGTALHLQTS L PALSEADTQELTQILRR  
 MKGLALEAESELERQDEALDGVA AVDRATLTI DKHRRMKRLT

**TR**TRPLEQKLISEEDLAANDILDYKDDDDKV

**Chromatograms:**

[https://cdn.origene.com/chromatograms/mk6672\\_e04.zip](https://cdn.origene.com/chromatograms/mk6672_e04.zip)

**Restriction Sites:**

Sgfl-Mlul

**Cloning Scheme:**


**ACCN:** NM\_053052

**ORF Size:** 1392 bp

**OTI Disclaimer:** The molecular sequence of this clone aligns with the gene accession number as a point of reference only. However, individual transcript sequences of the same gene can differ through naturally occurring variations (e.g. polymorphisms), each with its own valid existence. This clone is substantially in agreement with the reference, but a complete review of all prevailing variants is recommended prior to use. [More info](#)

**OTI Annotation:** This clone was engineered to express the complete ORF with an expression tag. Expression varies depending on the nature of the gene.

**Components:** The ORF clone is ion-exchange column purified and shipped in a 2D barcoded Matrix tube containing 10ug of transfection-ready, dried plasmid DNA (reconstitute with 100 ul of water).

- Reconstitution Method:**
1. Centrifuge at 5,000xg for 5min.
  2. Carefully open the tube and add 100ul of sterile water to dissolve the DNA.
  3. Close the tube and incubate for 10 minutes at room temperature.
  4. Briefly vortex the tube and then do a quick spin (less than 5000xg) to concentrate the liquid at the bottom.
  5. Store the suspended plasmid at -20°C. The DNA is stable for at least one year from date of shipping when stored at -20°C.

**Note:** Plasmids are not sterile. For experiments where strict sterility is required, filtration with 0.22um filter is required.

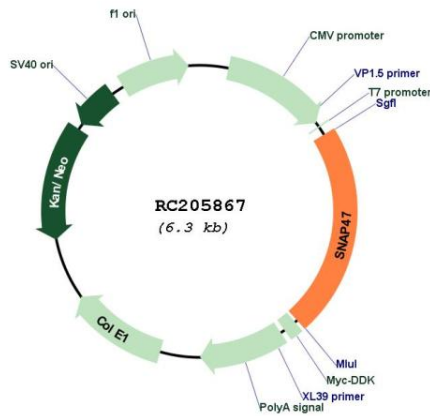
**RefSeq:** [NM\\_053052.3](#)

**RefSeq Size:** 2388 bp

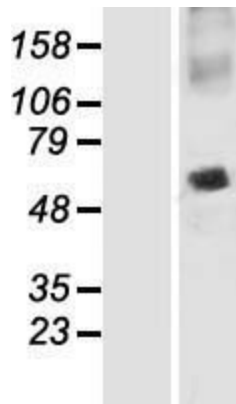
**RefSeq ORF:** 1260 bp

**Locus ID:** 116841

**UniProt ID:** [Q5SQN1](#)  
**Cytogenetics:** 1q42.13  
**Protein Pathways:** SNARE interactions in vesicular transport  
**MW:** 52.5 kDa  
**Gene Summary:** Plays a role in intracellular membrane fusion.[UniProtKB/Swiss-Prot Function]

**Product images:**


Circular map for RC205867



Western blot validation of overexpression lysate (Cat# [LY409312]) using anti-DDK antibody (Cat# [TA50011-100]). Left: Cell lysates from untransfected HEK293T cells; Right: Cell lysates from HEK293T cells transfected with RC205867 using transfection reagent MegaTran 2.0 (Cat# [TT210002]).