

Product datasheet for RC205863

C1orf85 (GLMP) (NM_144580) Human Tagged ORF Clone

Product data:

| | |
|--------------------------|---|
| Product Type: | Expression Plasmids |
| Product Name: | C1orf85 (GLMP) (NM_144580) Human Tagged ORF Clone |
| Tag: | Myc-DDK |
| Symbol: | GLMP |
| Synonyms: | C1orf85; NCU-G1 |
| Vector: | pCMV6-Entry (PS100001) |
| E. coli Selection: | Kanamycin (25 ug/mL) |
| Cell Selection: | Neomycin |
| ORF Nucleotide Sequence: | >RC205863 representing NM_144580 Red=Cloning site Blue=ORF Green=Tags(s) |

TTTTGTAATACGACTCACTATAGGGCGCCGGGAATTCGTCGACTGGATCCGGTACCGAGGAGATCTGCC
GCC**CGATCGC**C

ATGCGCGGCTCTGTGGAGTGCACCTGGGGTTGGGGCACTGTGCCCCAGCCCCCTGCTCCTTTGGACTC
TACTTCTGTTTGCAGCCCCATTTGGCCTGCTGGGGGAGAAGACCCGCCAGGTGTCTCTGGAGGTCATCCC
TAACTGGCTGGGCCCCGTCAGAACCTGCTTCATATACGGGCAGTGGGCACCAATCCACACTGCACTAT
GTGTGGAGCAGCCTGGGGCCTCTGGCAGTGGTAATGGTGGCCACCAACACCCCCACAGCACCCCTGAGCG
TCAACTGGAGCCTCCTGTATCCCTGAGCCCGATGGGGCCTGATGGTGTCCCTAAGGACAGCATTCA
GTTTTCTTCTGCCTTGTTTTTACCAGGCTGCTTGAGTTTGACAGCACCAACGTGTCCGATACGGCAGCA
AAGCCTTTGGGAAGACCATATCTCCATACTCCTTGCCGATTTCTTTGGAACAACATCACTGATTCAT
TGGATCCTGCCACCCTGAGTGCCACATTTCAAGGCCACCCCATGAACGACCCTACCAGGACTTTTGCCAA
TGGCAGCCTGGCCTTCAGGGTCCAGGCCTTTTCCAGGTCCAGCCGACCAGCCCAACCCCTCGCCTCCTG
CACACAGCAGACACCTGTCAGCTAGAGGTGGCCCTGATTGGAGCCTCTCCCGGGGAAACCGTTCCCTGT
TTGGGCTGGAGGTAGCCACATTGGGCCAGGGCCCTGACTGCCCTCAATGCAGGAGCAGCACTCCATCGA
CGATGAATATGCACCGGCCGTCTCCAGTTGGACCAGCTACTGTGGGGCTCCCTCCCATCAGGCTTTGCA
CAGTGGCGACCAGTGGCTTACTCCAGAAGCCGGGGGCCGAGAATCAGCCCTGCCTGCCAAGCTTCCC
CTTTCATCCTGCCTTAGCATACTCTTCCCCAGTACCCATTGTCCGAGCCTTCTTTGGGTCCCAGAA
TAACTTCTGTGCCTTCAATCTGACGTTCCGGGGCTTCCACAGGCCCTGGCTATTGGGACCAACACTACCTC
AGCTGGTCGATGCTCCTGGGTGTGGGCTTCCCTCCAGTGGACGGCTTGTCCCACTAGTCTGGGCATCA
TGGCAGTGGCCCTGGGTGCCCGAGGCTCATGCTGCTAGGGGGCGGCTTGGTTCTGCTGCTGCACCACAA
GAAGTACTCAGAGTACCAGTCCATAAAT

ACGCGTACGCGGCCGCTCGAGCAGAAACTCATCTCAGAAGAGGATCTGGCAGCAAATGATATCCTGGATT
ACAAGGATGACGACGATAAGGTTTAA



View online »

ACCN: NM_144580

ORF Size: 1218 bp

OTI Disclaimer: Due to the inherent nature of this plasmid, standard methods to replicate additional amounts of DNA in E. coli are highly likely to result in mutations and/or rearrangements. Therefore, OriGene does not guarantee the capability to replicate this plasmid DNA. Additional amounts of DNA can be purchased from OriGene with batch-specific, full-sequence verification at a reduced cost. Please contact our customer care team at custsupport@origene.com or by calling 301.340.3188 option 3 for pricing and delivery.

The molecular sequence of this clone aligns with the gene accession number as a point of reference only. However, individual transcript sequences of the same gene can differ through naturally occurring variations (e.g. polymorphisms), each with its own valid existence. This clone is substantially in agreement with the reference, but a complete review of all prevailing variants is recommended prior to use. [More info](#)

OTI Annotation: This clone was engineered to express the complete ORF with an expression tag. Expression varies depending on the nature of the gene.

RefSeq: [NM_144580.3](#)

RefSeq Size: 1603 bp

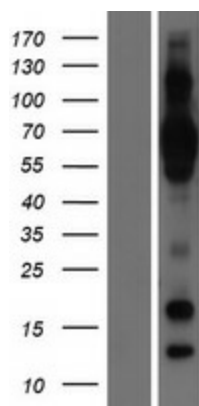
RefSeq ORF: 1221 bp

Locus ID: 112770

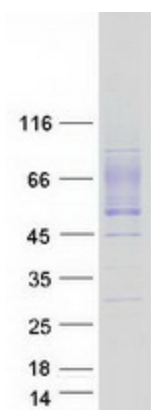
Protein Families: Transmembrane

MW: 43.7 kDa

Product images:



Western blot validation of overexpression lysate (Cat# [LY408288]) using anti-DDK antibody (Cat# [TA50011-100]). Left: Cell lysates from untransfected HEK293T cells; Right: Cell lysates from HEK293T cells transfected with RC205863 using transfection reagent MegaTran 2.0 (Cat# [TT210002]).



Coomassie blue staining of purified GLMP protein (Cat# [TP305863]). The protein was produced from HEK293T cells transfected with GLMP cDNA clone (Cat# RC205863) using MegaTran 2.0 (Cat# [TT210002]).