

Product datasheet for **RC205862**

MOXD1 (NM_015529) Human Tagged ORF Clone

Product data:

Product Type:	Expression Plasmids
Product Name:	MOXD1 (NM_015529) Human Tagged ORF Clone
Tag:	Myc-DDK
Symbol:	MOXD1
Synonyms:	dJ248E1.1; MOX; PRO5780
Mammalian Cell Selection:	Neomycin
Vector:	pCMV6-Entry (PS100001)
E. coli Selection:	Kanamycin (25 ug/mL)



[View online »](#)

ORF Nucleotide Sequence:

>RC205862 ORF sequence
 Red=Cloning site Blue=ORF Green=Tags(s)

TTTTGTAATACGACTCACTATAGGGCGGCCGGGAATTCGTCGACTGGATCCGGTACCGAGGAGATCTGCC
 GCC**CGGATCGCC**

ATGTGCTGCTGGCCGCTGCTCCTGCTGTGGGGCTGCTCCCCGGGACGGCGGGGGGCTCGGGCCGAA
 CCTATCCGCACCGGACCTCCTGGACTCGGAGGGCAAGTACTGGCTGGGCTGGAGCCAGCGGGCAGCCA
 GATCGCCTTCCGCCTCCAGGTGCGCACTGCAGGCTACGTGGGCTTCGGCTTCTCGCCACCGGGCCATG
 GCGTCCGCCGACATCGTCGTGGCGGGGTGGCCACGGCGGCCCTACCTCCAGGATTATTTTACAATG
 CAAATAGAGAGTTGAAAAAGATGCTCAGCAAGATTACCATCTAGAATATGCCATGGAAAAAGCACACA
 CACAATAATTGAATTTACCAGAGAGCTGCATACATGTGACATAAATGACAAGAGTATAACGGATAGCACT
 GTGAGAGTGATCTGGCCTACCACCATGAAGATGCAGGAGAAGCTGGTCCCAAGTACCATGACTCCAATA
 GGGGCACCAAGAGTTTGGGTTATTGAATCCTGAGAAAAGTGTGTCTATCTACAGCCTTACCATACTT
 TGATCTGGTAAATCAGGACGTCCCATCCCAAACAAGATACAACATATTGGTGCCAAATGTTTAAAGATT
 CCTGTGTTCCAAGAAAAGCATCATGTAATAAAGGTTGAGCCAGTGATACAGAGAGCCATGAGAGTCTGG
 TGCACCACATCCTGCTCTATCAGTGCAGCAACAACCTTAAACGACAGCGTTCTGGAGTCCGGCCACGAGTG
 CTATACCCCCAACATGCCGATGCATTCCTCACCTGTGAAACTGTGATTTTTGCCTGGGCTATTGGTGGA
 GAGGGCTTTTCTTATCCACCTCATGTTGGATTATCCCTTGGCACTCCATTAGATCCGCATTATGTGCTCC
 TAGAAGTCCATTATGATAATCCCACTTATGAGGAAGGCTTAATAGATAATTCTGGACTGAGGTTATTTTA
 CACAATGGATAAAGGAAATATGATGCTGGGGTATTGAGGCTGGCCTCTGGGTGAGCCTTCCATACC
 ATCCCTCCAGGGATCCCTGAGTTCAGTCTGAGGCTCACTGCACCTTTGGAGTGCCTGGAAGAGGCTCTGG
 AAGCCGAAAAGCCAAGTGAATTCATGTGTTTGTCTTCTCCATGCTCACCTGGCAGAGGCAT
 CAGGCTGCGTCATTTTCGAAAAGGGAAGGAAATGAAATTACTGCCTATGATGATGATTTTGACTTCAAT
 TTCCAGGAGTTTTCAGTATCTAAAGGAAGAACAACAATCTTACCAGGAGATAACCTAATTACTGAGTGTC
 GCTACAACACGAAAGATAGAGCTGAGATGACTTGGGGAGGACTAAGCACCAGGAGTGAATGTGTCTCTC
 ATACCTTCTTTATTACCCAAGAATTAATCTTACTCGATGTGCAAGTATCCAGACATTATGGAACAACCT
 CAGTTCATTGGGGTTAAGGAGATCTACAGACCAGTCACGACCTGGCCTTTCATTATCAAAGTCCCAAGC
 AATATAAAAACCTTTCTTTCATGGATGCTATGAATAAGTTTAAATGGACTAAAAGGAAGGTCTCTCCTT
 CAACGAGCTGGTCTCAGCCTGCCAGTGAATGTGAGATGTTCCAAGACAGACAATGCTGAGTGGTCGATT
 CAAGGAATGACAGCATTACCTCCAGATATAGAAGACCCTATAAAGCAGAACCTTTGGTGTGGCAGCT
 CTCTTCTCTCTCCCTGCACAGAGATTTCTCCATCAACTGCTTGTGTTTGCCTTCTGCTACTCAGCTGCAC
 GCTGAGCACCAAGAGCTTG

ACGCGTACGCGGCCGCTCGAGCAGAAACTCATCTCAGAAGAGGATCTGGCAGCAAATGATATCCTGGATT
 ACAAGGATGACGACGATAAGGTTTAA

Protein Sequence:

>RC205862 protein sequence
 Red=Cloning site Green=Tags(s)

MCCWPLLLLWGLLPGTAAGSGRTPHRTLLDSEKGYWLWWSQRGSQIAFRLQVRTAGYVGFSGSPTGAM
 ASADIVVGGVAHGRPYLQDYFTNANRELKKDAQDYHLEYAMENSTHTIIIEFTRELHTCDINDKSITDST
 VRVIWAYHHEDAGEAGPKYHDSNRGKSLRLLNPEKTSVLSTALPYFDLVNQDVPINPKDITYWCQMFKI
 PVFQEKHHVIKVEPVIQRGHESLVHHILLYQCSNNFNDSVLESGHECYHPNMPDAFLTCTETVIFAWAIGG
 EGFSYPPHVGLSLGTPLDPHYVLLLEVHYDNPTYEEGLIDNSGLRLFYTMDIRKYDAGVIEAGLWVSLFHT
 IPPGMPEFQSEGHCTLECLEEALAEKPSGIHVFAVLLHAHLAARGIRLRHFRKGKEMKLLAYDDDFDFN
 FQEFQYLKEEQTILPGDNLITECRYNTKDRAEMTWGGLSTRSEMCLSYLLYYPRINLTRCASIPDIMEQL
 QFIGVKEIYRPVTTWPFIIKSPKQYKNLSFMDAMNFKWTKKEGLSFNELVLSLPVNVRCSTKTDNAEWSI
 QGMTALPPDIERPDKAEPLVCGTSSSSSLHRDFSINLLVCLLLLSTLSTKSL

TRTRPLEQKLISEEDLAANDILDYKDDDDKV

Chromatograms: https://cdn.origene.com/chromatograms/mk6673_f05.zip

Restriction Sites: SgfI-MluI

Cloning Scheme:



ACCN: NM_015529

ORF Size: 1839 bp

OTI Disclaimer: The molecular sequence of this clone aligns with the gene accession number as a point of reference only. However, individual transcript sequences of the same gene can differ through naturally occurring variations (e.g. polymorphisms), each with its own valid existence. This clone is substantially in agreement with the reference, but a complete review of all prevailing variants is recommended prior to use. [More info](#)

OTI Annotation: This clone was engineered to express the complete ORF with an expression tag. Expression varies depending on the nature of the gene.

Components: The ORF clone is ion-exchange column purified and shipped in a 2D barcoded Matrix tube containing 10ug of transfection-ready, dried plasmid DNA (reconstitute with 100 ul of water).

Reconstitution Method:

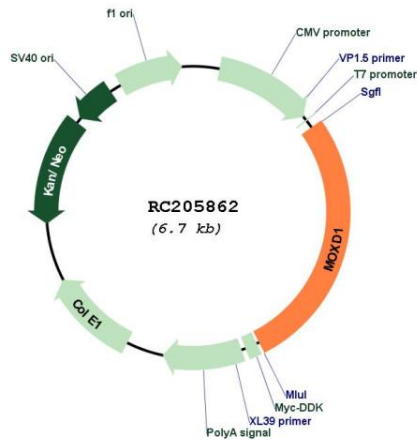
1. Centrifuge at 5,000xg for 5min.
2. Carefully open the tube and add 100ul of sterile water to dissolve the DNA.
3. Close the tube and incubate for 10 minutes at room temperature.
4. Briefly vortex the tube and then do a quick spin (less than 5000xg) to concentrate the liquid at the bottom.
5. Store the suspended plasmid at -20°C. The DNA is stable for at least one year from date of shipping when stored at -20°C.

RefSeq: [NM_015529.4](#)

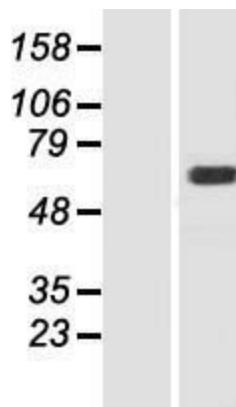
RefSeq Size: 3063 bp

RefSeq ORF: 1842 bp

Locus ID: 26002
UniProt ID: [Q6UVY6](#)
Cytogenetics: 6q23.2
Domains: Cu2_monoox_C
Protein Families: Druggable Genome
MW: 69.7 kDa

Product images:


Circular map for RC205862



Western blot validation of overexpression lysate (Cat# [LY414499]) using anti-DDK antibody (Cat# [TA50011-100]). Left: Cell lysates from untransfected HEK293T cells; Right: Cell lysates from HEK293T cells transfected with RC205862 using transfection reagent MegaTran 2.0 (Cat# [TT210002]).