

Product datasheet for RC205861L3

DYRK1B (NM_004714) Human Tagged Lenti ORF Clone

Product data:

Product Type:	Expression Plasmids
Product Name:	DYRK1B (NM_004714) Human Tagged Lenti ORF Clone
Tag:	Myc-DDK
Symbol:	DYRK1B
Synonyms:	AOMS3; MIRK
Mammalian Cell Selection:	Puromycin
Vector:	pLenti-C-Myc-DDK-P2A-Puro (PS100092)
E. coli Selection:	Chloramphenicol (34 ug/mL)
ORF Nucleotide Sequence:	The ORF insert of this clone is exactly the same as(RC205861).
Restriction Sites:	SgfI-MluI
Cloning Scheme:	

Cloning sites used for ORF Shuttling:



* The last codon before the Stop codon of the ORF.

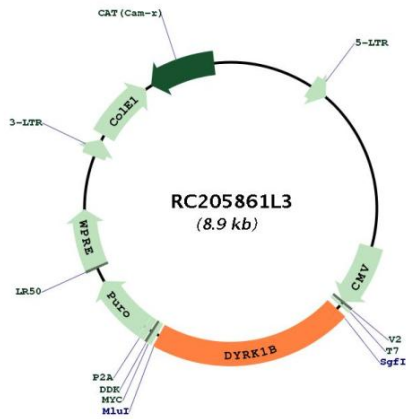
ACCN:	NM_004714
ORF Size:	1887 bp



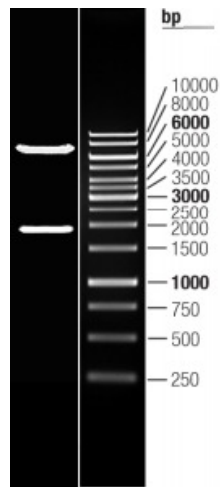
[View online »](#)

OTI Disclaimer:	The molecular sequence of this clone aligns with the gene accession number as a point of reference only. However, individual transcript sequences of the same gene can differ through naturally occurring variations (e.g. polymorphisms), each with its own valid existence. This clone is substantially in agreement with the reference, but a complete review of all prevailing variants is recommended prior to use. More info
OTI Annotation:	This clone was engineered to express the complete ORF with an expression tag. Expression varies depending on the nature of the gene.
Components:	The ORF clone is ion-exchange column purified and shipped in a 2D barcoded Matrix tube containing 10ug of transfection-ready, dried plasmid DNA (reconstitute with 100 ul of water).
Reconstitution Method:	<ol style="list-style-type: none">1. Centrifuge at 5,000xg for 5min.2. Carefully open the tube and add 100ul of sterile water to dissolve the DNA.3. Close the tube and incubate for 10 minutes at room temperature.4. Briefly vortex the tube and then do a quick spin (less than 5000xg) to concentrate the liquid at the bottom.5. Store the suspended plasmid at -20°C. The DNA is stable for at least one year from date of shipping when stored at -20°C.
RefSeq:	NM_004714.1
RefSeq Size:	2588 bp
RefSeq ORF:	1890 bp
Locus ID:	9149
UniProt ID:	Q9Y463
Cytogenetics:	19q13.2
Protein Families:	Druggable Genome, Protein Kinase, Transcription Factors
MW:	69.2 kDa
Gene Summary:	This gene encodes a member of a family of nuclear-localized protein kinases. The encoded protein participates in the regulation of the cell cycle. Expression of this gene may be altered in tumor cells, and mutations in this gene were found to cause abdominal obesity-metabolic syndrome 3. Alternative splicing results in multiple transcript variants. [provided by RefSeq, Jun 2014]

Product images:



Circular map for RC205861L3



Double digestion of RC205861L3 using SgfI and MluI