

Product datasheet for **RC205861**

DYRK1B (NM_004714) Human Tagged ORF Clone

Product data:

Product Type:	Expression Plasmids
Product Name:	DYRK1B (NM_004714) Human Tagged ORF Clone
Tag:	Myc-DDK
Symbol:	DYRK1B
Synonyms:	AOMS3; MIRK
Mammalian Cell Selection:	Neomycin
Vector:	pCMV6-Entry (PS100001)
E. coli Selection:	Kanamycin (25 ug/mL)



[View online »](#)

ORF Nucleotide Sequence:

>RC205861 ORF sequence
 Red=Cloning site Blue=ORF Green=Tags(s)

TTTTGTAATACGACTCACTATAGGGCGGCCGGGAATTCGTCGACTGGATCCGGTACCGAGGAGATCTGCC
 GCC**CGCATCGCC**

ATGGCCGTCCACCGGGCCATGGTCCCTTCTCTGGCTTCCAGGGCCCCAGGAGCACACGCAGGTATTGC
 CTGATGTGCGGCTACTGCCTCGGAGGCTGCCCCGGCCTTCCGGGATGCAACCTCAGCCCCGCTGGGTAA
 GCTCTCTGTGGACCTCATCAAGACCTACAAGCACATCAATGAGGTATACTATGCGAAGAAGAAGCGCGG
 GCCCAGCAGGCGCCACCCAGGATTCGAGCAACAAGAAGGAGAAGAAGGTCTGAACCATGGTTATGATG
 ACGACAACCATGACTACATCGTGCGCAGTGGCAGCGCTGGTGGAGCGCTACGAAATTGACTCGCTCAT
 TGGCAAAGGCTCCTTTGGCCAGGTGGTAAAGCCTATGATCATCAGACCCAGGAGCTTGTGGCCATCAAG
 ATCATCAAGAACAAAAGGCTTTCTGAACCAGGCCAGATTGAGCTGCGGCTGTGGAGCTGATGAACC
 AGCATGACACGGAGATGAAGTACTATATAGTACACCTGAAGCGGCACTTCATGTTCCGGAACCACCTGTG
 CCTGGTATTTGAGCTGCTGCTACAACCTGTACGACCTCTGCGCAACCCACTTCCGCGGCGTCTCG
 CTGAACCTGACCCGGAAGCTGGCCGAGCAGCTCTGCACGGCACTGCTCTTCTGGCCACGCTGAGCTCA
 GCATATTCACTGCGACCTCAAGCCCGAAAACATCTTGCTGTGCAACCCCAAGCGCAGCGCCATCAAGAT
 TGTGGACTTCCGAGCTCCTGCCAGCTTGGCCAGAGGATCTACCAGTATATCCAGAGCCGCTTCTACCGC
 TCACCTGAGGTGCTCCTGGGCACACCCTACGACCTGGCCATTGACATGTGGTCCCTGGGCTGCATCCTTG
 TGGAGATGCACACCGGAGAGCCCTCTTCAAGTGGTCCAATGAGGTGACCCAGATGAACCGCATTGTGGA
 GGTGCTGGGATCCCACCGGCCCATGCTGGACCAGGCGCCCAAGGCTCGAAGTACTTTGAACGGCTG
 CCTGGGGGTGGCTGGACCCTACGAAGGACGAAAGAACTCAGGAAGGATTACCAGGGCCCCGGGACACGGC
 GGCTGCAGGAGGTGCTGGGCGTGCAGAGGGCGGGCCCGGGGGCCGGCGGGGGGACCCGGGACACAG
 CCCCAGGACTACCTCCGCTTCCAGGACCTGGTCTGCGCATGCTGGAGTATGAGCCCGCCCGCCGATC
 AGCCCCCTGGGGCTCTGCAGCACGGCTTCTTCCGCCGACGGCCGACGAGGCCACCAACACGGGCCGG
 CAGGCAGCAGTGCCTCCACCTCGCCCGCCCCCTGCACACCTGCCCTCTTCCAGCACCGCCAGCTCCAT
 CTCCAGTCTGGAGGCTCCAGTGGCTCTCCAGTGACAACCGGACCTACCCTACAGCAACCGATATTGT
 GGGGGCCCTGGGCCCCATCACAGACTGTGAGATGAACAGCCCCAGGTCACCCCTCCAGCCGCTGC
 GGCCCTGGGCAGGGGTGATGTGCCCAAGACACATCAAGCCCTGCCTCTGCCTCGTACTGCCTGG
 GACCGGGCCAGTTACCCCCAGCCCCGATACCTTGGTGTCCCCCATACCAACCTCACCACCACC
 CCGGAGCTGATGGATGTGAGCCTGGTGGCGGCCCTGCTGACTGCTCCACCTACCCAGCGCCTGCC
 CCCAGCACCCGGCTGCCTCAGCCCTCCGACTCGGATGACTGGAGGTGTCACCCCTCCCGCTCTGTA
 TGACCCTGCCACTCTGGGGCTCACCTGGGCTCCGTGGTGTACCCAGAGCACAGCAGCCAGCTG

ACGCGTACGCGGCCGCTCGAGCAGAACTCATCTCAGAAGAGGATCTGGCAGCAAATGATATCCTGGATT
 ACAAGGATGACGACGATAAGGTTAA

Protein Sequence:

>RC205861 protein sequence
 Red=Cloning site Green=Tags(s)

MAVPPGHGPFSGFPGPQEHTQVLPDVRLPRRLPLAFRDATSAPLRKLSVDLIKTYKHINEVYYAKKKRR
 AQQAPPQDSSNKKEKKVLNHGYDDNDHYIVRSGERWLEREIDSLIGKGSFGQVVKAYDHQTQELVAIK
 I IKNKKAFLNQAQIELRLELMNQHDTEMKYYIVHLKRHFMRNHLCLVFELLSYNLYDLLRNTHFRGVS
 LNLTRKLAQQLCTALLFLATPELSIIHCDLKPENILLCNPKRSAIKIVDFGSSCQLGQRIYQYIQSRFYR
 SPEVLLGTPYDLAIDMWSLGCILVEMHTGEPLFSGSNEVDQMNRIEVLGIPPAAMLDAQPKARKYFERL
 PGGGWTLRRTKELRKDYQPGTRRLQEVLGVTGGPGRRRAGEPHSPADYLRFDLVLRLMEYEPAAARI
 SPLGALQHGFRRTADEATNTGPAGSSASTSPAPLDTCPSSTASSISSSGSSGSSSDNRTYRYSNRYC
 GPGPPIITDCEMNSPQVPPSQPLRPWAGGDVPHKTHQAPASASSLPGTGAQLPPQPRYLGRPPSPTSPPP
 PELMDVSLVGGPADCSPPHPAPAPQHPAASALRTRMTGGRPLPPDDPATLGPLHLGRVGPQSTAASS

TRTRPLEQKLISEEDLAANDILDYKDDDDKV

Chromatograms: https://cdn.origene.com/chromatograms/mk6199_e10.zip

Restriction Sites: SgfI-MluI

Cloning Scheme:



ACCN: NM_004714

ORF Size: 1887 bp

OTI Disclaimer: The molecular sequence of this clone aligns with the gene accession number as a point of reference only. However, individual transcript sequences of the same gene can differ through naturally occurring variations (e.g. polymorphisms), each with its own valid existence. This clone is substantially in agreement with the reference, but a complete review of all prevailing variants is recommended prior to use. [More info](#)

OTI Annotation: This clone was engineered to express the complete ORF with an expression tag. Expression varies depending on the nature of the gene.

Components: The ORF clone is ion-exchange column purified and shipped in a 2D barcoded Matrix tube containing 10ug of transfection-ready, dried plasmid DNA (reconstitute with 100 ul of water).

Reconstitution Method:

1. Centrifuge at 5,000xg for 5min.
2. Carefully open the tube and add 100ul of sterile water to dissolve the DNA.
3. Close the tube and incubate for 10 minutes at room temperature.
4. Briefly vortex the tube and then do a quick spin (less than 5000xg) to concentrate the liquid at the bottom.
5. Store the suspended plasmid at -20°C. The DNA is stable for at least one year from date of shipping when stored at -20°C.

RefSeq: [NM_004714.3](#)

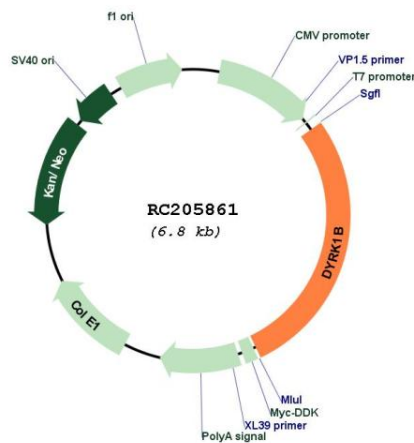
RefSeq Size: 2588 bp

RefSeq ORF: 1890 bp

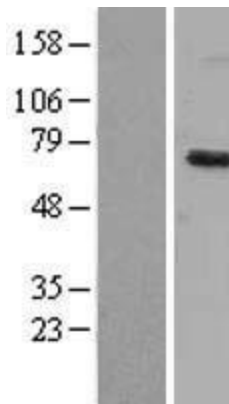
Locus ID: 9149
UniProt ID: [Q9Y463](#)
Cytogenetics: 19q13.2
Protein Families: Druggable Genome, Protein Kinase, Transcription Factors
MW: 69.2 kDa

Gene Summary: This gene encodes a member of a family of nuclear-localized protein kinases. The encoded protein participates in the regulation of the cell cycle. Expression of this gene may be altered in tumor cells, and mutations in this gene were found to cause abdominal obesity-metabolic syndrome 3. Alternative splicing results in multiple transcript variants. [provided by RefSeq, Jun 2014]

Product images:



Circular map for RC205861



Western blot validation of overexpression lysate (Cat# [LY401491]) using anti-DDK antibody (Cat# [TA50011-100]). Left: Cell lysates from untransfected HEK293T cells; Right: Cell lysates from HEK293T cells transfected with RC205861 using transfection reagent MegaTran 2.0 (Cat# [TT210002]).