

Product datasheet for RC205860

ZBTB26 (NM_020924) Human Tagged ORF Clone

Product data:

Product Type:	Expression Plasmids
Product Name:	ZBTB26 (NM_020924) Human Tagged ORF Clone
Tag:	Myc-DDK
Symbol:	ZBTB26
Synonyms:	bioref; ZNF481
Vector:	pCMV6-Entry (PS100001)
E. coli Selection:	Kanamycin (25 ug/mL)
Cell Selection:	Neomycin
ORF Nucleotide Sequence:	>RC205860 ORF sequence Red=Cloning site Blue=ORF Green=Tags(s)

TTTTGTAATACGACTCACTATAGGGCGCCGGAATTCGTCGACTGGATCCGGTACCGAGGATCTGCC
GCC**CGGATCGCC**

ATGTCTGAAAGATCAGATCTCCTTCACTTCAAGTTTGAAAATTATGGAGATTCATGTTACAAAAATGA
ACAAATTAAGAGAAGAGAATAAAATTTGTGATGTTACAGTTCTCATAGATGATATTGAGGTACAGGGACA
TAAATTTGTGTTTGTGTCAGGTTCCCTTCTTAAGAGACCAATTTTACTGAATGATTCAGAGAGGTG
AAAATCTCCATATTACAGAGTTCGGAAGTGGGGAGACAATTGCTCTTATCCTGTTATAGTGGTGTGCTGG
AATTCCTGAGATGGAAGTGGTAAATTACTTGACTGCTGCAAGTTTTCTTCAAGATGAGCCACATTGTAGA
ACGGTGCACACAGGCCCTGTGGAAGTTTATAAGCCAAAACAACCAATGGATAGTAAAGAGGGATGTGAA
CCACAGAGTGTTCTCCCAAGTCAAAGAAGCAGCAGGGAGATGCCAGAGGCTCCCAAGCAGGACTCAC
CTTGATTCATCCATCTGAAGACAGTATGGATATGGAGGACAGTATTCAGATTGTTAAGGTAGAATC
TATTGGGGATGTATCAGAGGTTAGAAGTAAAAAGATCAGAACCAGTTTATTTCTTCTGAACCCACTGCT
TTACATTCATCAGAGCCCAGCACTCCCTGATAAATCAACTGTGAAAACAGAGTAAGTAAAATAGAAC
AAAACCATCTCCACAATTATGCCCTTTCTTATACAGGCAGTGATAACATCATCATGGCCTCAAAGATG
CTTTGGCCCTAATATTGAGGTGTAGACAAAGGCTACAGTGGCATCACCAGTGCCCAAAGTGTACCAGG
GTGTTTCGTCACCTGGAGAACTACGCCAACCTTTAAAAATGCACAACTCTTTATGTGTCTACTCTGCG
GCAAGACTTTCACTCAGAAAGGCAACCTTCATCGACACATGCGTGTGCATGCCGGAATTAACCTTTCCA
GTGTAATACTGTGGAAAACCTTTTCTCAGAAGTGTTCCTTACAGGATCATCTAACCTTCACAGTGGA
GATAAGCCCCATAAATGTAATATTGTGATATGGTTTTTGCACATAAACAGTTTTGAGGAAACACCTTA
AACAGTGCATGGCAAAAACAGCTTTGATAATGCCAATGAGAGAAATGTACAAGACCTCACAGTGGATTT
TGATTCTTTTGCATGTACAACAGTACAGACTCTAAAGGGTGTGAGCCACAACCCGATGCAACACAGGTC
CTGGATGCAGTAAACTGGCCAAAGCTGCTCTGAACCTAAGAAATGATAGTACTTGTGTGAAT

ACGCGTACGCGGCCGCTCGAGCAGAAACTCATCTCAGAAGAGGATCTGGCAGCAAATGATATCCTGGATT
ACAAGGATGACGACGATAAGGTTTAA



[View online »](#)

Protein Sequence: >RC205860 protein sequence
 Red=Cloning site Green=Tags(s)

MSERSDLLHFKFENYGDMSMLQKMNKLREENKFCDDVTVLIDDIIEVQGHKIVFAAGSPFLRDQFLNDSREV
 KISILQSSSEVGRQLLLSCYSGLVEFPEMELVNYLTAASFLQMSHIVERCTQALWFKIKPKQPMDSKEGCE
 PQSASPQSKEQQGDARGSPKQDSPCIHPSSEDSMDMEDSDIQIVKVESIGDVSEVRSKKDQNFISSEPTA
 LHSSEPQHSLINSTVENRVSEIEQNHLHNYALSYTGSNDIIMASKDVFPGNIRGVDKGLQWHHCPCPKCTR
 VFRHLENYANHLKMKLFCLLCGKTFQKGNLHRHMRVHAGIKPFQCKICGKTFQKCSLQDHLNLHSG
 DKPHKCNVCDMVF AHKPVL RKHLKQLHGKNSFDNANERNVQDLTVDFDSFACTTVDTSKGCQPDPATQV
 LDAGKLAQAVLNL RNDSTCVN

TRTRPLEQKLISEEDLAANDILDYKDDDDKV

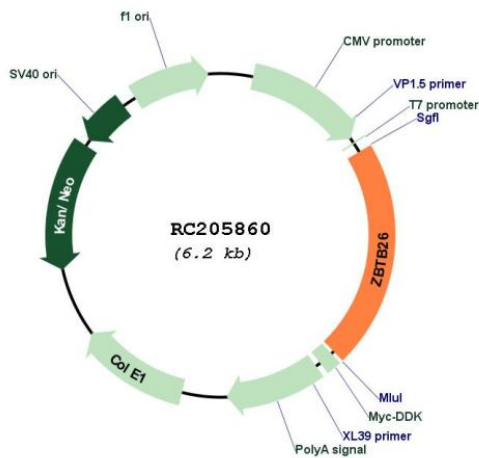
Chromatograms: https://cdn.origene.com/chromatograms/mk6673_f06.zip

Restriction Sites: SgfI-MluI

Cloning Scheme:

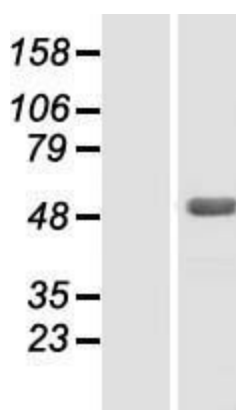


Plasmid Map:



ACCN:	NM_020924
ORF Size:	1323 bp
OTI Disclaimer:	<p>Due to the inherent nature of this plasmid, standard methods to replicate additional amounts of DNA in E. coli are highly likely to result in mutations and/or rearrangements. Therefore, OriGene does not guarantee the capability to replicate this plasmid DNA. Additional amounts of DNA can be purchased from OriGene with batch-specific, full-sequence verification at a reduced cost. Please contact our customer care team at custsupport@origene.com or by calling 301.340.3188 option 3 for pricing and delivery.</p> <p>The molecular sequence of this clone aligns with the gene accession number as a point of reference only. However, individual transcript sequences of the same gene can differ through naturally occurring variations (e.g. polymorphisms), each with its own valid existence. This clone is substantially in agreement with the reference, but a complete review of all prevailing variants is recommended prior to use. More info</p>
OTI Annotation:	This clone was engineered to express the complete ORF with an expression tag. Expression varies depending on the nature of the gene.
RefSeq:	NM_020924.4
RefSeq Size:	1935 bp
RefSeq ORF:	1326 bp
Locus ID:	57684
UniProt ID:	Q9HCK0
Domains:	BTB, zf-C2H2
Protein Families:	Transcription Factors
MW:	50 kDa
Gene Summary:	May be involved in transcriptional regulation.[UniProtKB/Swiss-Prot Function]

Product images:



Western blot validation of overexpression lysate (Cat# [LY412222]) using anti-DDK antibody (Cat# [TA50011-100]). Left: Cell lysates from untransfected HEK293T cells; Right: Cell lysates from HEK293T cells transfected with RC205860 using transfection reagent MegaTran 2.0 (Cat# [TT210002]).