

Product datasheet for **RC205857**

Arylsulfatase D (ARSD) (NM_001669) Human Tagged ORF Clone

Product data:

Product Type:	Expression Plasmids
Product Name:	Arylsulfatase D (ARSD) (NM_001669) Human Tagged ORF Clone
Tag:	Myc-DDK
Symbol:	Arylsulfatase D
Synonyms:	ASD
Mammalian Cell Selection:	Neomycin
Vector:	pCMV6-Entry (PS100001)
E. coli Selection:	Kanamycin (25 ug/mL)



[View online »](#)

ORF Nucleotide Sequence:

>RC205857 representing NM_001669
 Red=Cloning site Blue=ORF Green=Tags(s)

TTTTGTAATACGACTCACTATAGGGCGGCCGGAATTCGTCGACTGGATCCGGTACCGAGGAGATCTGCC
 GCC**CGGATCGCC**

ATGCGATCCGCCGCGGAGGGGACGCGCCGCCGCCAGGGACTCTTTGCCGGTCTACTGTTTT
 TATGCTTGCTTCTGAAGACGTGTGAACCTAAAACCTGCAAATGCCTTTAAACCAAATATCCTACTGATCAT
 GGCGGATGATCTAGGCACTGGGGATCTCGGTTGCTACGGGAACAATACACTGAGAACGCCGAATATTGAC
 CAGCTTGACAGGAAGGTGTGAGGCTCACTCAGCACCTGGCGGCCGCCCGCTCTGCACCCAAAGCCGAG
 CTGCATTCTCACAGGGAGACATTCCTTCAGATCAGGCATGGACGCCAGCAATGGATACCGGGCCCTTCA
 GTGGAACGCAGGCTCAGGTGGACTCCCTGAGAACGAAACCACTTTTGAAGAATCTTGACGACGATGGC
 TATGCAACCGGCCTCATAGGAAAATGGCACCAGGGTGTGAATTGTGCATCCCGCGGGGATCACTGCCACC
 ACCCCCTGAACCACGGATTTGACTATTTCTACGGCATGCCCTTACGCTCACAAACGACTGTGACCCAGG
 CAGGCCCCCGAAGTGGACGCCGCCCTGAGGGCGCAGCTCTGGGGTTACACCCAGTTCCTGGCGCTGGGG
 ATTCTCACCTGGCTGCCGGCCAGACCTGCGGTTTCTTCTGTCTCCGCGAGAGCAGTACCGGCATGG
 CCGGCGTGGGCTGCCTGTTTTTCATCTCTTGGTACTCCTCCTCCGGGTTTGTGCGACGCTGGAACGTAT
 TCTGATGAGAAACCATGACGTCACGGAGCAACCCATGGTTCTGGAGAAAACAGCGAGTCTTATGCTAAAG
 GAAGCTGTTTCTATATTGAAAGACACAAGCATGGGCCATTTCTCCTCTTCTTTCTTGTGATGTGC
 ACATTCCTTGTGACACGAGTGCATTCTGGGAAAAGTCAGCATGGCTTATATGGTGATAATGTGGA
 GGAGATGGACTGGCTCATAGGTAAGGTTCTTAATGCCATCGAAGACAATGGTTTAAAGAACTCAACATTC
 ACGTATTTACCTCTGACCATGGAGGACATTTAGAGGCAAGAGATGGACACAGCCAGTTAGGGGGATGGA
 ACGGAATTTACAAAGGTGGGAAGGGCATGGGAGGATGGGAAGGTGGGATCCGCGTCCCGGGGATCTTCCA
 CTGGCCGGGGTCTCCCGGCCGCCGAGTGATTGGAGAGCCACGAGCCTGATGGACGTGTTCCCTACT
 GTGGTCCAGTGGTGGGTGGCGAGGTGCCCCAGGACAGGGTGATTGATGGCCACAGCCTGGTACCCTTGC
 TGCAGGGAGCTGAGGCACGCTCGGCACATGAGTTCCTGTTTCACTGTGGGCAGCATCTTACGCAGC
 ACGCTGGCACCAGAAGGACAGTGGAAAGCTCTGGAAGGTTCACTACACGACCCCGCAGTTCACCCCGAG
 GGAGCGGGGGCTGCTACGGCCGAGGCTCTGCCATGCTCCGGGGAGGGCGTGACCCATCACAGACCC
 CTTTGCTCTTTGACCTCTCCAGGACCCCTCCGAGGCACGGCCCTGACCCCGACTCCGAGCCCTGT
 CCACGCCGTGATAGCAAGGTAGGTGCCCGGTGTCGGAGCATCGGCAGACCCTGAGTCTGTGCCCCAG
 CAGTTTTCCATGAGCAACATCCTGTGGAAGCCGTGGCTGCAGCCGTGCTCGGACATTTCCGTTCTGTT
 CATGCCACGAGGATGGGATGGCACCC

ACGCGTACGCGGCCGCTCGAGCAGAAACTCATCTCAGAAGAGGATCTGGCAGCAAATGATATCCTGGATT
 ACAAGGATGACGACGATAAGGTTTAA

Protein Sequence:

>RC205857 representing NM_001669
 Red=Cloning site Green=Tags(s)

MRSAARRGRAAPAARDSLPVLLFLCLLLKTCPEKTANAFKPNILLIMADDLGTGDLGCGYGNNTLRTPNID
 QLAEEGVRLQHLAAAPLCTPSRAAFLTGRHSFRSGMDASNGYRALQWNAGSGGLPENETTFARILQQHG
 YATGLIGKWHQGVNCSARGDHCHHPLNHGFDFYGMPTLTNDPGRPEVDAALRAQLWGYTQFLALG
 ILTLAAGQTCGFFSVSARA VTMAGVGLFFISWYSSFGFVRRWNCILMRNHDTVQPMVLEKTASMLK
 EAVSYIERHKHGFLLFLSLLHVHIPLVTTSAFLGKSQHGLYGDNVEEMDWLIGKVLNAIEDNGLKNSTF
 TYFTSDHGGHLEARDGHSQLGGWNGIYKGGKMGWEGGIRVPGIFHWPVLPAGRVIGEPTSLMDVFPT
 VVQLVGGEVPQDRVIDGHSLVPLLQGAEARSAHEFLFHYCQHLHAARWHQKDSGSVWKVHYTTPQFHPE
 GAGACYGRVPCSGEGVTHRPPLLFDLSRDPSEARPLTPDSEPLYHAVIARVGA AVSEHRQTLSPVQP
 QFSMSNILWKPWLQPCGHFPFCSCHEDGDGTP

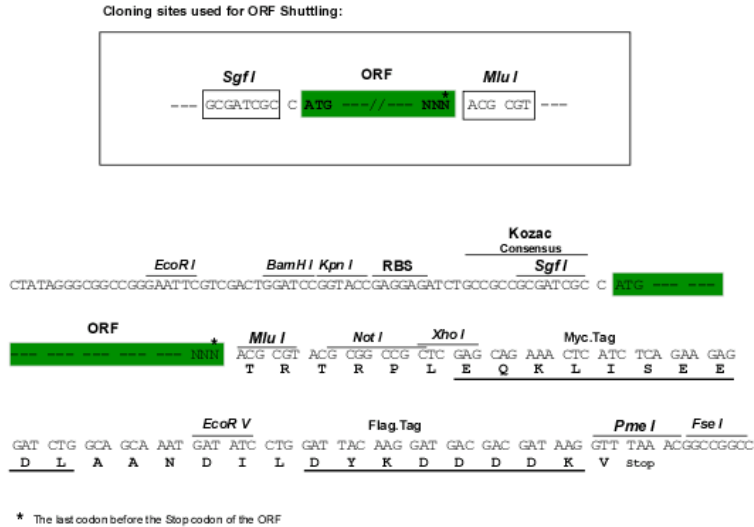
TRTRPLEQKLI SEEDLAANDILDYKDDDDKV

Chromatograms:

https://cdn.origene.com/chromatograms/mk6238_g04.zip

Restriction Sites: SgfI-MluI

Cloning Scheme:



ACCN: NM_001669

ORF Size: 1779 bp

OTI Disclaimer: The molecular sequence of this clone aligns with the gene accession number as a point of reference only. However, individual transcript sequences of the same gene can differ through naturally occurring variations (e.g. polymorphisms), each with its own valid existence. This clone is substantially in agreement with the reference, but a complete review of all prevailing variants is recommended prior to use. [More info](#)

OTI Annotation: This clone was engineered to express the complete ORF with an expression tag. Expression varies depending on the nature of the gene.

Components: The ORF clone is ion-exchange column purified and shipped in a 2D barcoded Matrix tube containing 10ug of transfection-ready, dried plasmid DNA (reconstitute with 100 ul of water).

- Reconstitution Method:
1. Centrifuge at 5,000xg for 5min.
 2. Carefully open the tube and add 100ul of sterile water to dissolve the DNA.
 3. Close the tube and incubate for 10 minutes at room temperature.
 4. Briefly vortex the tube and then do a quick spin (less than 5000xg) to concentrate the liquid at the bottom.
 5. Store the suspended plasmid at -20°C. The DNA is stable for at least one year from date of shipping when stored at -20°C.

Note: Plasmids are not sterile. For experiments where strict sterility is required, filtration with 0.22um filter is required.

RefSeq: [NM_001669.4](#)

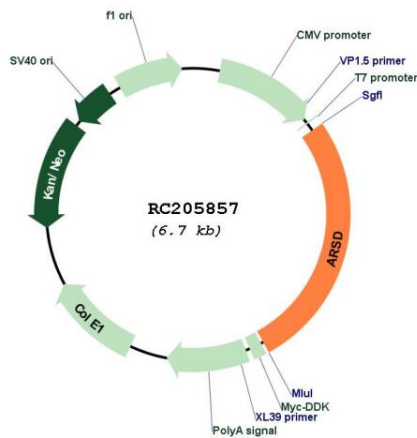
RefSeq Size: 5159 bp

RefSeq ORF: 1782 bp

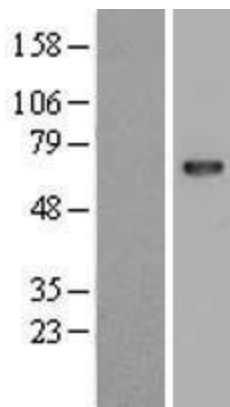
Locus ID: 414
UniProt ID: [P51689](#)
Cytogenetics: Xp22.33
Domains: Sulfatase
Protein Families: Druggable Genome, Transmembrane
MW: 64.86 kDa

Gene Summary: The protein encoded by this gene is a member of the sulfatase family. Sulfatases are essential for the correct composition of bone and cartilage matrix. The encoded protein is postrationally glycosylated and localized to the lysosome. This gene is located within a cluster of similar arylsulfatase genes on chromosome X. A related pseudogene has been identified in the pseudoautosomal region of chromosome Y. [provided by RefSeq, Jul 2011]

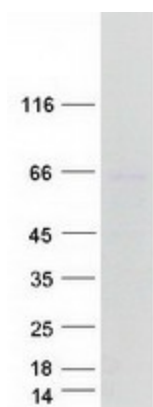
Product images:



Circular map for RC205857



Western blot validation of overexpression lysate (Cat# [LY419791]) using anti-DDK antibody (Cat# [TA50011-100]). Left: Cell lysates from untransfected HEK293T cells; Right: Cell lysates from HEK293T cells transfected with RC205857 using transfection reagent MegaTran 2.0 (Cat# [TT210002]).



Coomassie blue staining of purified ARSD protein (Cat# [TP305857]). The protein was produced from HEK293T cells transfected with ARSD cDNA clone (Cat# RC205857) using MegaTran 2.0 (Cat# [TT210002]).