

Product datasheet for **RC205854**

LOC220686 (NM_199283) Human Tagged ORF Clone

Product data:

Product Type:	Expression Plasmids
Product Name:	LOC220686 (NM_199283) Human Tagged ORF Clone
Tag:	Myc-DDK
Symbol:	LOC220686
Mammalian Cell Selection:	Neomycin
Vector:	pCMV6-Entry (PS100001)
E. coli Selection:	Kanamycin (25 ug/mL)



[View online »](#)

ORF Nucleotide Sequence:

>RC205854 representing NM_199283
 Red=Cloning site Blue=ORF Green=Tags(s)

TTTTGTAATACGACTCACTATAGGGCGGCCGGAATTCGTCGACTGGATCCGGTACCGAGGAGATCTGCC
 GCC**GCGATCGCC**

ATGACAGTGGAGCAGAAATTTGGCTGTTTCTGCTGAGATAAAGGAAGCAGACCCCTGGCTGCCTCGG
 AAGCAAGTCAACCCAAACCTGTCCCCGAAGTGACCCCCACTACATCTGGATCGACTTCTGGTGCA
 GCGGTTTGAGATCGCAAGTACTGCAGCTCTGACCAAGTGGAGATCTTCTCCAGCCTGCTGCAGCGCTCC
 ATGTCCCTGAACATCGGCAGGGCCAAGGGGAGCATGAACCGCACGTGGCGGCCATCGGGCCCCGTTCA
 AGCTGCTGACCTGGGGCTGTCCCTCTGCATGCCGATGTGGTCCAAATGCAACCATCCGCAATGTGCT
 TCGCGAGAAGATCTACTCCACTGCCTTTGACTACTTCAGCTGTCCCCAAAGTTTCTACTCAAGGAGAG
 AAGCGGTGCGTGAAGACATAAGCATCATGATTAATTTGGACCGCCATGTTCTCAGATAAGAAGTACC
 TGACCGCCAGCCAGCTTGTCCCCAGCTGACATCGGCGACCTCTGGAGCAGTTAGTAGAGGAGAACAC
 AGGCTCCTTGTCGGGCCAGCGAAGGACTTTTACCAGCGGGAGTTTGATTTCTTTAAACAAGATCACCAAC
 GTGTCCGCTATCATCAAGCCCTACCCTAAAGGCGACGAGAGAAAGAAGGCTTGCTGTGCGCCCTGTCTG
 AAGTGACGGTGCAGCCAGGCTGCTCCCTGCCAGCAACCCGAAGCCATTGTGCTGGACGTCGACTACAA
 GTCTGGGACCCCGATGCAGAGTCTGCAAAAGCCCATATCTGGCCAAGTTCAAGGTGAAGCGATGTGGA
 GTTAGTGAACCTGAAAAAGAAGTCTGCGGTGCCGCTCAGACTCTGAGGATGAGTGCAGCACGCAGGAGG
 CCGACGGCCAGAAGATCTCTGGCAGGCAGCCATCTTCAAAGTGGGAGACGACTGCCGGCAGGACATGCT
 GGCCCTGCAGATCATCGACCTCTTCAAGAACATCTTCCAGCTGGTCCGCTGGACCTCTTTGTTTTTCCC
 TACCGCGTGGTGGCCACTGCCCTGGGTGCGGGTGATCGAGTGCATCCCGACTGCACCTCCCGGGACC
 AGCTGGGCGCCAGACAGACTTCGGCATGTACGACTACTTCACACGCCAGTACGGGGATGAGTCCACTCT
 GGCTTCCAGCAGGCCCGCTACAACCTCATCCGAAGCATGGCCGCTACAGCCTCCTGCTTCTCCTGCTG
 CAGATCAAGGACAGACACAACGGCAACATTATGCTGGACAAGAAGGGCCATATCATCCACATTGACTTTG
 GCTTATGTTTGAAGCTCGCCGGCGCAATCTCGGCTGGGAACCCGACATCAAGCTGCAGGATGAGAT
 GGTGATGATCATGGGGGCAAGATGGAGGCCACACCCCTCAAGTGGTTCATGGAGATGTGTGTCGAGGC
 TACCTGGCTGTGCGGCACAGTTTAGCCCCAACATGACTGAGCGCGAGGCTGCAAATTTTCATCATGAAGG
 TCATCCAGAGCTGCTTCTCAGCAACAGGAGCCGACCTACAACATGATCCAGTACTATCAGAATGACAT
 CCCCTAC

ACGCGTACGCGGCCGCTCGAGCAGAAACTCATCTCAGAAGAGGATCTGGCAGCAAATGATATCCTGGATT
 ACAAGGATGACGACGATAAGGTTTAA

Protein Sequence:

>RC205854 representing NM_199283
 Red=Cloning site Green=Tags(s)

MTVEQKFLFSAEIKEADPLAASEASQPKPCPPEVTPHYIWIDFLVQRFEIAKYCSSDQVEIFSSLLQRS
 MSLNIGRAKGSNMRHVAAI GPRFKLLTLGLSLLHADVVPNATIRNVLREKIYSTAFDYFSCPPKFPTQGE
 KRLREDISIMIKFWTAMFSDKKYLTASQLVPPADIGDLLEQLVEENTGSLSGPAKDFYQREFDFFNKITN
 VSAIIKPYPKGDERKKAACL SALSEVTVPQGC SLPSNPEAIVLDVDYKSGTPMQSAAKAPYLAKFKVKRCG
 VSELEKEGLRCRSDSEDECSTQEADGQKISWQAIFKLGDDCRQDMLALQIIDLFKNIFQLVGLDLFVFP
 YRVVATAPGCGVIECIPDCTSRDQLGRQTDGMYDYFTRQYGDSTLAFQQARYNFIRSMAYSLLLFLL
 QIKDRHNGNIMLDKKGHIHIDFGFMFESSPGGNL GWEPDIKLTDEMVMIMGGKMEATPFKWFMEMCVRG
 YLAVRHRFSPNMTEREANFIMKVIQSCFLSNRSRTYNMIQYYQNDIPY

TRTRPLEQKLISEEDLAANDILDYKDDDDKV

Chromatograms:

https://cdn.origene.com/chromatograms/mk6667_h09.zip

Restriction Sites:

Sgfl-Mlul

Cloning Scheme:


ACCN: NM_199283

ORF Size: 1617 bp

OTI Disclaimer: The molecular sequence of this clone aligns with the gene accession number as a point of reference only. However, individual transcript sequences of the same gene can differ through naturally occurring variations (e.g. polymorphisms), each with its own valid existence. This clone is substantially in agreement with the reference, but a complete review of all prevailing variants is recommended prior to use. [More info](#)

OTI Annotation: This clone was engineered to express the complete ORF with an expression tag. Expression varies depending on the nature of the gene.

Components: The ORF clone is ion-exchange column purified and shipped in a 2D barcoded Matrix tube containing 10ug of transfection-ready, dried plasmid DNA (reconstitute with 100 ul of water).

- Reconstitution Method:**
1. Centrifuge at 5,000xg for 5min.
 2. Carefully open the tube and add 100ul of sterile water to dissolve the DNA.
 3. Close the tube and incubate for 10 minutes at room temperature.
 4. Briefly vortex the tube and then do a quick spin (less than 5000xg) to concentrate the liquid at the bottom.
 5. Store the suspended plasmid at -20°C. The DNA is stable for at least one year from date of shipping when stored at -20°C.

RefSeq: [NM_199283.4](#), [NP_954977.2](#)

RefSeq Size: 2298 bp

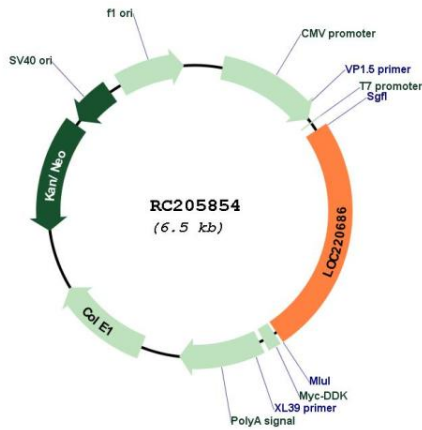
RefSeq ORF: 1505 bp

Locus ID: 220686

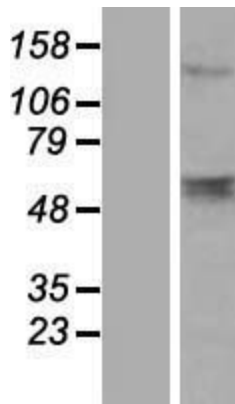
Cytogenetics: 22q11.21

MW: 56.7 kDa

Product images:



Circular map for RC205854



Western blot validation of overexpression lysate (Cat# [LY404605]) using anti-DDK antibody (Cat# [TA50011-100]). Left: Cell lysates from untransfected HEK293T cells; Right: Cell lysates from HEK293T cells transfected with RC205854 using transfection reagent MegaTran 2.0 (Cat# [TT210002]).