

Product datasheet for **RC205852**

Ribophorin II (RPN2) (NM_002951) Human Tagged ORF Clone

Product data:

Product Type:	Expression Plasmids
Product Name:	Ribophorin II (RPN2) (NM_002951) Human Tagged ORF Clone
Tag:	Myc-DDK
Symbol:	Ribophorin II
Synonyms:	RIBIIR; RPN-II; RPNII; SWP1
Mammalian Cell Selection:	Neomycin
Vector:	pCMV6-Entry (PS100001)
E. coli Selection:	Kanamycin (25 ug/mL)



[View online »](#)

**ORF Nucleotide
Sequence:**

>RC205852 ORF sequence
 Red=Cloning site Blue=ORF Green=Tags(s)

TTTTGTAATACGACTCACTATAGGGCGGCCGGGAATTCGTCGACTGGATCCGGTACCGAGGAGATCTGCC
 GCC**GCGATCGCC**

ATGGCGCCGCGGGTTCAAGCACTGTCTTCTGTGGCCCTGACAATCATAGCCAGCACCTGGGCTCTGA
 CGCCCACTCACTACCTCACCAAGCATGACGTGGAGAGACTAAAAGCCTCGCTGGATCGCCCTTTCACAAA
 TTTGGAATCTGCCTTCTACTCCATCGTGGGACTCAGCAGCCTTGGTGCTCAGGTGCCAGATGCAAAGAAA
 GCATGTACCTACATCAGATCTAACCTTGATCCCAGCAATGTGGATTCCCTCTTCTACGCTGCCAGGCCA
 GCCAGGCCCTCTCAGGATGTGAGATCTCTATTTCAAATGAGACCAAAGATCTGCTTCTGGCAGCTGCAG
 TGAGGACTCATCTGTTACCCAGATCTACCATGCAGTTGCAGCTCTAAGTGGCTTTGGCCTCCCTTGGCA
 TCCCAAGAAGCACTCAGTGCCCTTACTGCTCGTCTCAGCAAGGAGGAGACTGTGCTGGCAACAGTCCAGG
 CTCTGCAGACAGCATCCACCTGTCCCAGCAGGCTGACCTGAGGAGCATCGTGGAGGAGATTGAGGACCT
 TGTTGCTCGCCTGGATGAACTCGGGGGCGTGTATCTCCAGTTTGAAGAAGGACTGAAACAACAGCGTTA
 TTTGTGGCTGCCACCTACAAGCTCATGGATCATGTGGGGACTGAGCCATCCATAAGGAGGATCAGGTCA
 TCCAGCTGATGAACGCGATCTTCAGCAAGAAGAACTTTGAGTCCCTCTCCGAAGCCTTCAGCGTGGCCTC
 TGCAGCTGCTGTGCTCTCGCATAATCGCTACCAGTGCCAGTTGTGGTTGTGCCTGAGGGCTCTGCTTCC
 GACACTCATGAACAGGCTATCTTGCGGTTGCAAGTCACCAATGTTCTGTCTCAGCCTCTGACTCAGGCCA
 CTGTTAAACTAGAACATGCTAAATCTGTTGCTTCCAGAGCCACTGTCTCCAGAAGACATCCTTACCCCC
 TGTAGGGGATGTTTTGAACTAAATTTTCATGAACGTCAAATTTCCAGTGGTTATTATGACTTCTTGTG
 GAAGTTGAAGGTGACAACCGGTATATTGCAAATACCGTAGAGCTCAGAGTCAAGATCTCCACTGAAGTTG
 GCATCACAAATGTTGATCTTTCCACCGTGGATAAGGATCAGAGCATTGCACCCAAAACACTCCCGGTGAC
 ATACCCAGCCAAAAGCCAAGGGCACATTCATCGCAGACAGCCACCAGAACTTCGCCTTGTCTTCCAGCTG
 GTAGATGTGAACACTGGTGTGAACTCACTCCTACCAGACATTTGCCGACTCCATAACCAAGAAGACTG
 GCCAGGAAGTGGTGTGTTGTTGCCGAGCCAGACAACAAGAAGCTGTACAAGTTTGAAGTGGATACCTCTGA
 AAGAAAGATTGAATTTGACTCTGCCTCTGGCACCTACACTCTCTACTTAATCATTGGAGATGCCACTTTG
 AAGAACCAATCCTCTGGAATGTGGCTGATGTGGTCAAGTTCCCTGAGGAAGAAGCTCCCTCGACTG
 TCTTGCCAGAACCTTTTCACTCCAAAACAGGAAATTCAGCACCTGTTCCGCGAGCCTGAGAAGAGGCC
 CCCCACCGTGGTCCAATACATTCAGTCCCTGATCCTCTCGCCGTTGCTTCTGCTCTTCTGCTCTGTGG
 ATCCGGATTGGTCCAATGTCTCAACTCACTTTTGTCTCTAGCACGATTATTTTCACTGGGACATG
 CTGCTATGCTGGGACTCATGTATGTCTACTGGACTCAGCTCAACATGTTCCAGACCTTGAAGTACCTGGC
 CATCTTGGGCAGTGTGACGTTTCTGGCTGGCAATCGGATGCTGGCCAGCAGGCAGTCAAGAGAACAGCA
 CAT

ACGCGTACGCGGCCGCTCGAGCAGAACTCATCTCAGAAGAGGATCTGGCAGCAAATGATATCCTGGATT
 ACAAGGATGACGACGATAAGGTTTAA

Protein Sequence: >RC205852 protein sequence
Red=Cloning site Green=Tags(s)

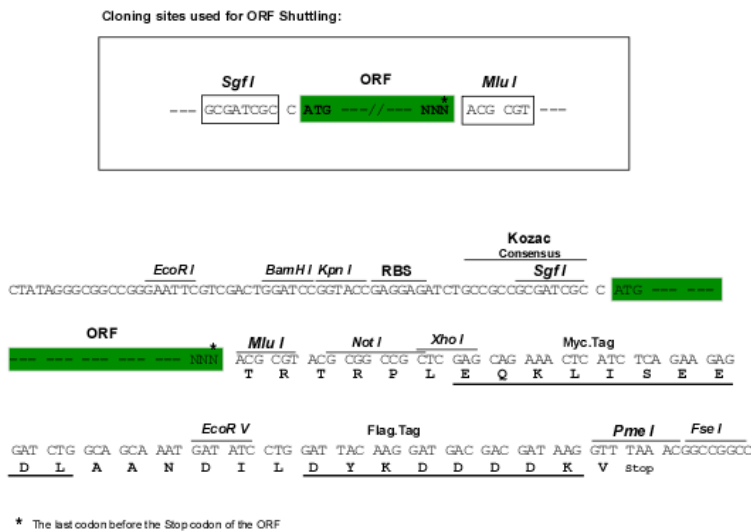
MAPPGSSTVFLALTIIASTWALTPHYLTKHDVERLKASLDRPFTNLESAFYISIVGLSSLGAQVPDAKK
 ACTYIRSNLDPSNVDSL FYAAQASQALSGCEISISNETKDLLLAAVSEDSVSTQIYHAVAALSGFGLPLA
 SQEALSALTARLSKEETVLATVQALQTASHLSQQADLRISIVVEIEDLVARLDELGGVYLQFEEGLETTAL
 FVAATYKLMHDVHGTEPSIKEDQVIQLMNAIFSKKNFESLSEAFSVASAAAVLSHNRYHVPVVVVPEGSAS
 DTHEQAILRLQVTNVLSQLTQATVKLEHAKSVASRATVLQKTSFTPVGDV FELNFMNVKFSSGYDFLV
 EVEGDNRYIANTVELRVKISTEVGITNVDLSTVDKQSIAPKTTTRVTYPAKAKGTFIADSHQNFALFFQL
 VDVTGAE LTPHQTFVRLHNQKTQGEVVFVAEPDNKNVYKFELDTSERKIEFDSASGTYTLYLIIIGDATL
 KNPILWNVADVVIKPEEEAPSTVLSQNLFTPKQEIQHLFREPEKRPPTVVSNTFTALILSPLLLL FALW
 IRIGANVSNFTFAPSTIIIFHLGHAAMLGLMYVYWTQLNMFQTLKYLAILGSVTF LAGNRMLAQQAVKRTA
 H

TRTRPLEQKLISEEDLANDILDYKDDDDKV

Chromatograms: https://cdn.origene.com/chromatograms/mk6420_b05.zip

Restriction Sites: SgfI-MluI

Cloning Scheme:



ACCN: NM_002951

ORF Size: 1893 bp

OTI Disclaimer: The molecular sequence of this clone aligns with the gene accession number as a point of reference only. However, individual transcript sequences of the same gene can differ through naturally occurring variations (e.g. polymorphisms), each with its own valid existence. This clone is substantially in agreement with the reference, but a complete review of all prevailing variants is recommended prior to use. [More info](#)

OTI Annotation: This clone was engineered to express the complete ORF with an expression tag. Expression varies depending on the nature of the gene.

Components: The ORF clone is ion-exchange column purified and shipped in a 2D barcoded Matrix tube containing 10ug of transfection-ready, dried plasmid DNA (reconstitute with 100 ul of water).

Reconstitution Method:

1. Centrifuge at 5,000xg for 5min.
2. Carefully open the tube and add 100ul of sterile water to dissolve the DNA.
3. Close the tube and incubate for 10 minutes at room temperature.
4. Briefly vortex the tube and then do a quick spin (less than 5000xg) to concentrate the liquid at the bottom.
5. Store the suspended plasmid at -20°C. The DNA is stable for at least one year from date of shipping when stored at -20°C.

RefSeq: [NM_002951.5](#)

RefSeq Size: 2538 bp

RefSeq ORF: 1896 bp

Locus ID: 6185

UniProt ID: [P04844](#)

Cytogenetics: 20q11.23

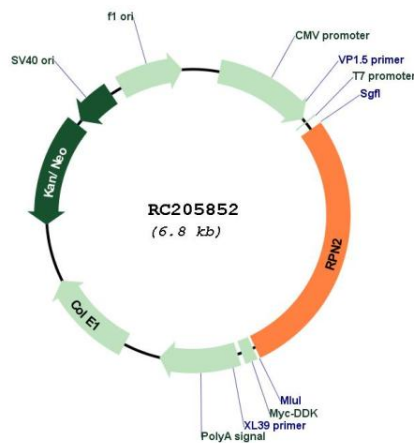
Protein Families: Transmembrane

Protein Pathways: Metabolic pathways, N-Glycan biosynthesis

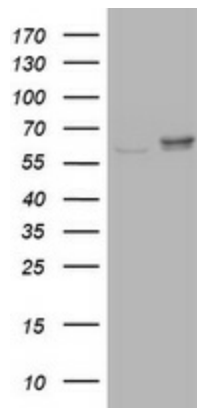
MW: 69.3 kDa

Gene Summary: This gene encodes a type I integral membrane protein found only in the rough endoplasmic reticulum. The encoded protein is part of an N-oligosaccharyl transferase complex that links high mannose oligosaccharides to asparagine residues found in the Asn-X-Ser/Thr consensus motif of nascent polypeptide chains. This protein is similar in sequence to the yeast oligosaccharyl transferase subunit SWP1. Alternatively spliced transcript variants encoding different isoforms have been found for this gene. [provided by RefSeq, Oct 2008]

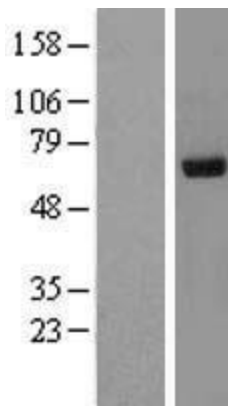
Product images:



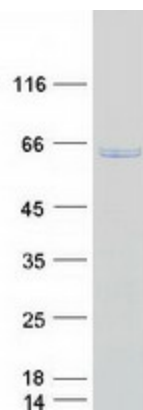
Circular map for RC205852



HEK293T cells were transfected with the pCMV6-ENTRY control (Cat# [PS100001], Left lane) or pCMV6-ENTRY RPN2 (Cat# RC205852, Right lane) cDNA for 48 hrs and lysed. Equivalent amounts of cell lysates (5 ug per lane) were separated by SDS-PAGE and immunoblotted with anti-RPN2(Cat# [TA504604]). Positive lysates [LY418998] (100ug) and [LC418998] (20ug) can be purchased separately from OriGene.



Western blot validation of overexpression lysate (Cat# [LY418998]) using anti-DDK antibody (Cat# [TA50011-100]). Left: Cell lysates from untransfected HEK293T cells; Right: Cell lysates from HEK293T cells transfected with RC205852 using transfection reagent MegaTran 2.0 (Cat# [TT210002]).



Coomassie blue staining of purified RPN2 protein (Cat# [TP305852]). The protein was produced from HEK293T cells transfected with RPN2 cDNA clone (Cat# RC205852) using MegaTran 2.0 (Cat# [TT210002]).