

Product datasheet for **RC205850**

ZNF143 (NM_003442) Human Tagged ORF Clone

Product data:

Product Type:	Expression Plasmids
Product Name:	ZNF143 (NM_003442) Human Tagged ORF Clone
Tag:	Myc-DDK
Symbol:	ZNF143
Synonyms:	pHZ-1; SBF; STAF
Mammalian Cell Selection:	Neomycin
Vector:	pCMV6-Entry (PS100001)
E. coli Selection:	Kanamycin (25 ug/mL)



[View online »](#)

ORF Nucleotide Sequence:

>RC205850 ORF sequence
 Red=Cloning site Blue=ORF Green=Tags(s)

TTTTGTAATACGACTCACTATAGGGCGGCCGGAATTCGTCGACTGGATCCGGTACCGAGGAGATCTGCC
 GCC**CGCATCGCC**

ATGACAGAGTTTCTGGAGGAGGGATGGAGGCGCAACATGTTACGCTGTGCTTGACAGAGGCAGTACCCG
 TGGCAGATGGTGACAACCTTAGAAAAATGGAAGCGTAAGCTTGCAAGCAGTAACACTTGACAGATGGTTC
 TACTGCTTACATACAACAATTCTAAAGATGCAAACTCATAGATGGCCAGGTCATTAGTTGGAAGAT
 GGTTCGCGCCTATGTTCAACATGTACCCATACCTAAAAGTACAGGGGACAGTTTTCGCTAGAGGATG
 GTCAAGCAGTACAGTTAGAAGATGGTACCACAGCATTTATCCACACCTCCAAAGATAGTTATGACCA
 GAGTGCATTACAGGCGTTCAGCTGGAAGATGGTACCACAGCTTATATCCACCATGCAGTCAAGTCCCG
 CAGTCTGACACCATCTTGCAATTCAGGCTGATGGGACAGTGGCAGGTCTGCACACTGGGGATGCTACAA
 TTGACCCTGACACCATCAGTGTCTTGGAAACAGTATGCAGCAAAGGTGCCATTGATGGAAGTAAAGTGT
 AGCAGGTAAGTGAATGATTGGAGAAAATGAGCAAGAGAAAAAAATGCAGATTGTTTTACAAGGACATGCT
 ACAAGAGTAACTGCTAAATCTCAACAGAGTGGAGAGAAGGCATTCGATGTGAATATGATGGATGTGGAA
 AATTATATAACAAGCTCATCATCTCAAGTCCATGAGAGGTCACACACAGGAGATCGGCCCTTATCAGTG
 TGAGCATGCAGGCTGTGGGAAGGCATTTGCAACAGGTTATGGATTAAGTACAGTACAGTACAGTACAGT
 GGAGAAAAGCCATATCGGTGTTCCGGAAGATAATTGTAATACTTTCAAACTTCAGGAGATCTACAGA
 AACACATCAGAACTACACAGGAGAAAGGCCCTTAAAGTGCCTTCGAAGGCTGCGGTCCGTTCTTAC
 AACATCAAATATCAGAAAAGTGCACGTTAGGACACACACAGGAGAAAGACCTTACTGACACAGAGCCA
 GGATGTGGGAGGGCATTGCCAGTGAACAAATATAAAAACCATGTGAGGATACACACAGGAGAAAAAGC
 CATATGTTTGTACAGTTCCTGGGTGTGACAAAAGGTTTACAGAATATCCAGTTTGTACAACATCATGT
 TGTCCACACTATTCCAACCTTACAACCTGTAACCACTGTGGGAAGACATACAAGCAGATCTCCACGCTG
 GTCATGCACAAAACGACAGCCCAACGACACTGAGCCATCGAGGAGGAGCAGGAAGCCTTCTTTGAGC
 CGCCCCAGGTAAGGTGAAGATGTTCTTAAAGGTTCCAGATTACGTATGTTACAGGTGTAGAAGGGGA
 CGACGTTGTTTCTACACAAGTAGCCACAGTAACCCAATCTGGACTGAGTCAACAAGTTACTCATATCC
 CAGGATGGGACTCAGCATGTCAACATATCTCAAGCTGACATGCAGGCCATTGGCAACACCATCACAATGG
 TAACGCAGGATGGCAGCCCATCACAGTCCCCGCCATGATGCAGTCATCTCCTCAGCAGGAACGCCTC
 TGTTGCTATGGTACTGCTGAGGTTACAGAAGGGCAACAGGTTGCAATTGTAGCTCAAGACTTGGCAGCA
 TTCCATACTGCCTCATCAGAAATGGGGCACCAGCAGCATAGCCATCACTTAGTAACCACAGAAACCAGAC
 CTCTGACCTTAGTAGCAACATCCAATGGCACCCAGATTGCAGTTCAGCTTGGAGAACAGCCATCTCTGGA
 AGAAGCCATCAGAATAGCGTCTAGAATCCAACAAGGAGAAACGCCAGGTTGGATGAT

ACGCGTACGCGGCCGCTCGAGCAGAACTCATCTCAGAAGAGGATCTGGCAGCAAATGATATCCTGGATT
 ACAAGGATGACGACGATAAGGTTTAA

Protein Sequence:

>RC205850 protein sequence
 Red=Cloning site Green=Tags(s)

MTEFPPGGMEQHVTLCLTEAVTVADGDNLENMEGVSQAVTLADGSTAYIQHNSKDAKLIDGQVIQLED
 GSAAYVQHVPVPIPKSTGDSLRLLEDGQAVQLEDGTTAFIHHTSKDSYDQSAQAVQLEDGTTAYIHHAVQVP
 QSDTILAIQADGTVAGLHTGDATIDPDTISALEQYAAKVSIDGSESVAGTGMIGENEQEKKMQIVLQGHA
 TRVTAKSQSQGEKAFRCEYDGCGLYTTAHLKVVHERSHTGDRPYQCEHAGCGKAFATGYGLKSHVRHT
 GEKPYRSEDNCTKSFKTSGLDQKHIRTHTGERPFKCPFEGCGRSFTTNSIRKVVHVRHTGERPYYCTEP
 GCGRAFASATNYKNHVRHTGEKPYVCTVPGCDKRFTEYSSLYKHHVVHTHSKPYNCNHCGKTYKQISTL
 VMHKRTAHNDTEPIEEEQEAFEPFPPGGEDVLDKGSQITYVTGVEGDDVVSTQVATVTQVGLSQVTLIS
 QDGTQHVNISQADMQAIGNITMVTQDGPITVPAHDAVISSAGTHSVAMVTAEGTEGQQVAIVAQDLAA
 FHTASSEMGHQQHSHHLVTTETRPLTLVATSNGTQIAVQLGEQPSLEEAIIRIASRIQQGETPLDD

TRTRPLEQKLISEEDLAANDILDYKDDDDKV

Chromatograms: https://cdn.origene.com/chromatograms/mk6208_b06.zip

Restriction Sites: SgfI-MluI

Cloning Scheme:



ACCN: NM_003442

ORF Size: 1878 bp

OTI Disclaimer: The molecular sequence of this clone aligns with the gene accession number as a point of reference only. However, individual transcript sequences of the same gene can differ through naturally occurring variations (e.g. polymorphisms), each with its own valid existence. This clone is substantially in agreement with the reference, but a complete review of all prevailing variants is recommended prior to use. [More info](#)

OTI Annotation: This clone was engineered to express the complete ORF with an expression tag. Expression varies depending on the nature of the gene.

Components: The ORF clone is ion-exchange column purified and shipped in a 2D barcoded Matrix tube containing 10ug of transfection-ready, dried plasmid DNA (reconstitute with 100 ul of water).

- Reconstitution Method:
1. Centrifuge at 5,000xg for 5min.
 2. Carefully open the tube and add 100ul of sterile water to dissolve the DNA.
 3. Close the tube and incubate for 10 minutes at room temperature.
 4. Briefly vortex the tube and then do a quick spin (less than 5000xg) to concentrate the liquid at the bottom.
 5. Store the suspended plasmid at -20°C. The DNA is stable for at least one year from date of shipping when stored at -20°C.

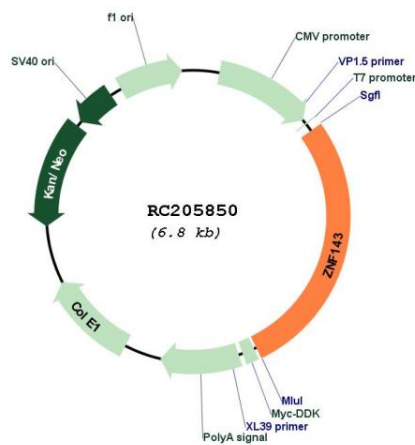
RefSeq: [NM_003442.3](#), [NP_003433.2](#)

RefSeq Size: 2955 bp

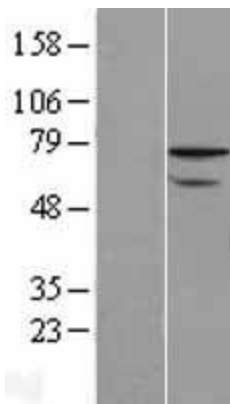
RefSeq ORF: 1917 bp

Locus ID: 7702
UniProt ID: [P52747](#)
Cytogenetics: 11p15.4
Domains: zf-C2H2
Protein Families: Transcription Factors
MW: 67.6 kDa
Gene Summary: Transcriptional activator. Activates the gene for selenocysteine tRNA (tRNA^{Sec}). Binds to the SPH motif of small nuclear RNA (snRNA) gene promoters. Participates in efficient U6 RNA polymerase III transcription via its interaction with CHD8.[UniProtKB/Swiss-Prot Function]

Product images:



Circular map for RC205850



Western blot validation of overexpression lysate (Cat# [LY418699]) using anti-DDK antibody (Cat# [TA50011-100]). Left: Cell lysates from un-transfected HEK293T cells; Right: Cell lysates from HEK293T cells transfected with RC205850 using transfection reagent MegaTran 2.0 (Cat# [TT210002]).