

## Product datasheet for **RC205847**

### **SNX8 (NM\_013321) Human Tagged ORF Clone**

#### **Product data:**

Product Type:	Expression Plasmids
Product Name:	SNX8 (NM_013321) Human Tagged ORF Clone
Tag:	Myc-DDK
Symbol:	SNX8
Synonyms:	Mvp1
Mammalian Cell Selection:	Neomycin
Vector:	pCMV6-Entry (PS100001)
E. coli Selection:	Kanamycin (25 ug/mL)



[View online »](#)

**ORF Nucleotide Sequence:**

>RC205847 ORF sequence  
 Red=Cloning site Blue=ORF Green=Tags(s)

TTTTGTAATACGACTCACTATAGGGCGGCCGGAATTCGTCGACTGGATCCGGTACCGAGGAGATCTGCC  
 GCC**CGCATCGCC**

ATGACTGGCCCGCGATGGACCCGCTGCCCGGGCTGCAGTCGGGGCGGCAGCTGAGGCGGAGGCTGACG  
 AGGAGGCGGATCCCCCGCGTCAGATCTGCCGACACCCAGGCCATCGAGCCCCAGGCCATCGTGCAGCA  
 GGTCCCAGCCCCAGTCGAATGCAGATGCCGACGGGAACCCGCTGCTGTGTCCACACCCCTGCAGGAG  
 CTGCTGGCCAGGGACACCGTGCAGGTGGAGCTCATTCCGGAGAAGAAGGGCCTTCTCCTGAAGCATGTGG  
 AGTATGAGGTTTCCAGCCAGCGTTCAAGTCTCGGTATACAGACGGTACAATGACTTTCGTGGTCTTCCA  
 GGAGATGCTCCTGCACAAGTTCCCTACCGTATGGTGCCTGCCCTGCCACCAAGAGAATGCTGGGAGCT  
 GACAGGGAGTTTCATCGAGGCCAGGAGAGGCCCTGAAGCGCTTCGTCAACCTGGTGGCGGACACCCCC  
 TGTTCTCCGAGGATGTGGTCTCAAGCTTCTCCTGTCCTTCAGCGGCTCGGATGTGCAGAACAAGTTAAA  
 GGAGTCAGCACAGTGCCTCGGGACGAATTCCTGAAGTGAAGCTGGCTACCAGGGCCAAGGACTTCCTC  
 CCAGCTGACATCCAGGCTCAGTTTGCCATCAGCCGGGAGCTGATCCGGAACATCTACAATAGCTTTCACA  
 AGCTTCGCGACAGGGCCGAGCGGATCGCGTCCGCGGCCATCGACAATGCGGCAGATCTTCTCATATTCGG  
 GAAGGAGCTAAGTGAATAGGGTCTGACACGACCCCGCTGCCCTCCTGGGCCGCTCTGAATAGCAGCACG  
 TGGGGTCCCTGAAGCAGGCTCTGAAAGGCCTGTCTGTGGAATTCGCGCTGCTCGCCGACAAGGCTGCAC  
 AACAGGGTAAGCAGGAAGAGAACGACGTGGTGGAGAAGCTGAACCTTCTTGGATCTGCTGCAGTCTTA  
 TAAGGACCTGTGCGAGCGCATGAGAAGGGCGTGTGCACAAGCACCAGCGGGCCCTGCACAAGTACAGC  
 CTGATGAAGAGGCAGATGATGAGCGCCACCGCGCAGAACCAGCGGAGTCCGTGGAGCAGCTGGAGT  
 CCCGCTCGTGGAGCAGGAGAACCGGATTCAGACGATGGAGCTGCGGAACACTTCTCCTGTACTGCCT  
 GCACCAGGAGACGAGCTCATCCAGTCTACCTGCCCTCACCTCCACATCCTCCGCGCCTTCGTCAAC  
 TCTCAGATCCAAGGGCACAAGGAGATGAGCAAGGTGTGGAACGACCTGAGGCCAAAGCTCAGCTGCCTCT  
 TTGCGGGACCACACAGCACCCCTGACCCACCGTCTCCCGCGGAGGACGGCCTGTGTCCTCAC

**ACGCGT**ACGCGGCCGCTCGAGCAGAACTCATCTCAGAAGAGGATCTGGCAGCAAATGATATCCTGGATT  
 ACAAGGATGACGACGATAAGGTTTAA

**Protein Sequence:**

>RC205847 protein sequence  
 Red=Cloning site Green=Tags(s)

MTGRAMDPLPAAAVGAAAEAEDEEADPPASDLPTPQAIEPQAI VQQVPAPSRMQMPQGNPLLSHTLQE  
 LLARDTVQVELIPEKKGLFLKHVEYEVSSQRFKSSVYRRYNDFFVVFQEMLLHKFPYRMPALPPKRMLGA  
 DREFIEARRRALKRFVNLVARHPLFSEDVVLKFLSFGSDVQNKLKESAQCVGDEF LNCKLATRAKDFL  
 PADIQAQFAISRELI RNIYNSFHKLRDRAERIASRAIDNAADLLIFGKELSAIGSDTTPLP SWAALNSST  
 WGLKQALKGLSVEFALLADKAAQGGKQEENDVVEKLNLFLLDLSYKDL CERHEKGVLHKHQRALHKYS  
 LMKRQMSATAQNREPEVSVEQLESRIVEQENAIQT MELRNYFSLYCLHQETQLIHVYLPLTSHILRAFVN  
 SGIQGHKEMSKVWNDLRPKLSCLFAGPHSTLTPPCSPPEDGLCPH

**TR**TRPLEQKLISEEDLAANDILDYKDDDDKV

**Chromatograms:**

[https://cdn.origene.com/chromatograms/mk6176\\_h05.zip](https://cdn.origene.com/chromatograms/mk6176_h05.zip)

**Restriction Sites:**

Sgfl-Mlul

**Cloning Scheme:**


**ACCN:** NM\_013321

**ORF Size:** 1395 bp

**OTI Disclaimer:** The molecular sequence of this clone aligns with the gene accession number as a point of reference only. However, individual transcript sequences of the same gene can differ through naturally occurring variations (e.g. polymorphisms), each with its own valid existence. This clone is substantially in agreement with the reference, but a complete review of all prevailing variants is recommended prior to use. [More info](#)

**OTI Annotation:** This clone was engineered to express the complete ORF with an expression tag. Expression varies depending on the nature of the gene.

**Components:** The ORF clone is ion-exchange column purified and shipped in a 2D barcoded Matrix tube containing 10ug of transfection-ready, dried plasmid DNA (reconstitute with 100 ul of water).

**Reconstitution Method:**

1. Centrifuge at 5,000xg for 5min.
2. Carefully open the tube and add 100ul of sterile water to dissolve the DNA.
3. Close the tube and incubate for 10 minutes at room temperature.
4. Briefly vortex the tube and then do a quick spin (less than 5000xg) to concentrate the liquid at the bottom.
5. Store the suspended plasmid at -20°C. The DNA is stable for at least one year from date of shipping when stored at -20°C.

**RefSeq:** [NM\\_013321.1](#), [NP\\_037453.1](#)

**RefSeq Size:** 4756 bp

**RefSeq ORF:** 1398 bp

**Locus ID:** 29886

**UniProt ID:** [Q9Y5X2](#)

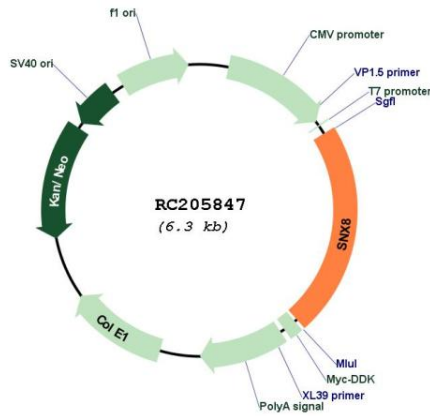
**Cytogenetics:** 7p22.3

**Domains:** PX

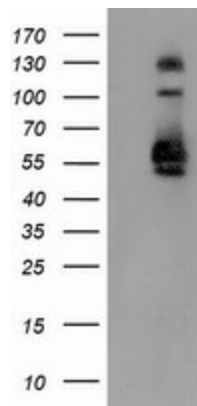
**MW:** 52.6 kDa

**Gene Summary:** May be involved in several stages of intracellular trafficking. May play a role in intracellular protein transport from early endosomes to the trans-Golgi network.[UniProtKB/Swiss-Prot Function]

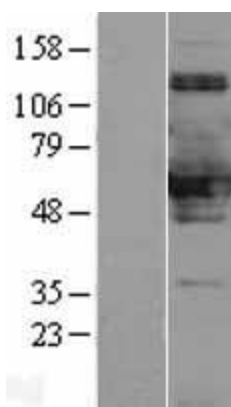
**Product images:**



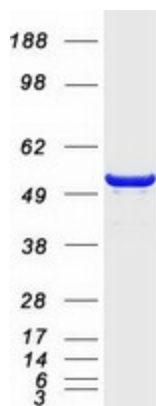
Circular map for RC205847



HEK293T cells were transfected with the pCMV6-ENTRY control (Cat# [PS100001], Left lane) or pCMV6-ENTRY SNX8 (Cat# RC205847, Right lane) cDNA for 48 hrs and lysed. Equivalent amounts of cell lysates (5 ug per lane) were separated by SDS-PAGE and immunoblotted with anti-SNX8 (Cat# [TA502136]). Positive lysates [LY402251] (100ug) and [LC402251] (20ug) can be purchased separately from OriGene.



Western blot validation of overexpression lysate (Cat# [LY402251]) using anti-DDK antibody (Cat# [TA50011-100]). Left: Cell lysates from untransfected HEK293T cells; Right: Cell lysates from HEK293T cells transfected with RC205847 using transfection reagent MegaTran 2.0 (Cat# [TT210002]).



Coomassie blue staining of purified SNX8 protein (Cat# [TP305847]). The protein was produced from HEK293T cells transfected with SNX8 cDNA clone (Cat# RC205847) using MegaTran 2.0 (Cat# [TT210002]).