

Product datasheet for **RC205834**

CPSF73 (CPSF3) (NM_016207) Human Tagged ORF Clone

Product data:

Product Type:	Expression Plasmids
Product Name:	CPSF73 (CPSF3) (NM_016207) Human Tagged ORF Clone
Tag:	Myc-DDK
Symbol:	CPSF73
Synonyms:	CPSF-73; CPSF73
Mammalian Cell Selection:	Neomycin
Vector:	pCMV6-Entry (PS100001)
E. coli Selection:	Kanamycin (25 ug/mL)



[View online »](#)

**ORF Nucleotide
Sequence:**

>RC205834 ORF sequence
 Red=Cloning site Blue=ORF Green=Tags(s)

TTTTGTAATACGACTCACTATAGGGCGGCCGGGAATTCGTCGACTGGATCCGGTACCGAGGAGATCTGCC
 GCC**CGGATCGCC**

ATGTCTGCGATTCTGCTGAGGAGAGCGACCAGCTGCTGATCCGACCCCTTGGAGCTGGCAAGAAGTAG
 GAAGATCATGTATTATTCTCGAGTTCAAAGGAAGAAAAAATAGCTCGACTGTGGGATCCACCCTGGCCT
 AGAAGGAATGGATGCTCTTCTTATATTGATTTAATTGACCCAGCTGAGATTGATCTCCTATTAATTAGT
 CATTTCCATTTGGATCACTGTGGAGCTCTGCCCTGGTTTCTACAGAAGACAAGTTTCAAAGGAAGAACAT
 TTATGACTCATGCCACAAAAGCTATTTATAGATGGCTTTTCTGATTATGTCAAAGTTAGTAACATATC
 AGCAGACGACATGCTGTATACCGAGACAGATTTGGAAGAAAGCATGGACAAAATTGAAACTATCACTTT
 CATGAAGTTAAGGAAGTTGCGGGAATCAAGTTTGGTGTACCATGCAGGTCACGTCCTAGGAGCCGCCA
 TGTTTCATGATTGAGATCGCAGGCGTGAAGCTTTGTACACTGGTATTTCTCAAGACAAGAAGATAGGCA
 CTTAATGGCAGCTGAAATTCCTAATATTAAGCCTGATATTCCTTATCATTGAATCTACTTATGGGACCCAT
 ATCCATGAGAAACGTGAAGAGCGAGAAGCAAGATTCTGTAACACTGTCCAGCATTTGTAACAGAGGAG
 GCAGGGGTCTCATTCTGTCTTTGCTCTTGAAGGGCTCAGGAGCTGCTCTTGATTCTAGATGAGTACTG
 GCAGAATCACCCAGAACTACATGACATTCGAATACTATGCATCATCTTTGGCCAAGAAGTGTATGGCA
 GTGTACCAGACATATGTAATGCCATGAATGACAAAATCCGCAACAGATCAACATCAATAATCCCTTTG
 TTTTCAAACACATTAGTAACCTCAAGAGCATGGATCATTTTGTGACATTGGTCCAGTGTGTAAATGGC
 CTCCCCAGGCATGATGCAAAGTGGCTTATCCAGAGAATTTTGAAGGCTGGTGTACTGATAAGAGGAAT
 GGTGTCTATTAGCGGGATACTGTGTAGAAGGGACACTGCCAAGCACATCATGTCTGAACCTGAAGAAA
 TCACTACTATGTCTGGACAGAAGTTACCACTGAAAATGTCTGTTGATTACATTTCTTCTCAGCTCACAC
 GGATTACCAGCAAACCAGTGAATTTATTCGTGCTTTGAAACCGCCTCATGTGATTTTAGTCCATGGAGAA
 CAGAATGAAATGGCCAGATTGAAAGCAGCACTGATTGAGAAATGAAAGTAAACGATGAAGTTCACATAG
 AGGTTTCATAATCCTCGGAATACAGAAGCAGTGACCTTAAACTTCAGAGGAGAAAACTAGCCAAGTTAT
 GGGATTTTATGACAGACAAAAACCAGAACAAGGCCAGCGGGTCTCAGGAATACTTGTTAAAAGAACTTT
 AATTATCACATACTTTCTCCTTGCACCTGTCCAATTATACTGACCTGGCCATGAGCACGGTGAAGCAGA
 CCCAAGCCATTCATATACTGGTCCCTTAATTTGCTCTGTTACCAGCTGCAGAAATTGACAGGTGATGT
 GGAAGAATTAGAAATCAAGAAAACTGCTCTGAAAGTGTCAAATAATTACTGTAATACAAGAACCA
 GGCATGGTGGTATTAGAATGGCTGGCAAACCTTCTAATGATATGTATGCAGATACAGTAACTGTGA
 TATTGGAAGTTCAGTCAAATCCCAAAATAAGAAAAGGTGCAGTACAGAAGTTTCTAAAAAATTAGAAAT
 GCACGTTTACAGCAAGAGGTTGGAGATCATGCTCCAGGACATATTTGGAGAAGACTGTGTAAGTGTAAAG
 GATGACTCTATTCTTAGCGTCACAGTGGACGGGAAAACCTGCAACCTTAACTTGGAGACACGGACTGTAG
 AATGTGAAGAGGGAAGTGAAGACGATGAATCCCTCCGAGAAATGGTGGAGCTGGCTGCACAGAGACTGTA
 CGAGGCCCTGACGCCAGTTCAC

ACGCGTACGCGGGCGCTCGAGCAGAAACTCATCTCAGAAGAGGATCTGGCAGCAAATGATATCCTGGATT
 ACAAGGATGACGACGATAAGGTTTAA

Protein Sequence: >RC205834 protein sequence
 Red=Cloning site Green=Tags(s)

MSAIPAEESDQLLIRPLGAGQEVGRSCIILEFKGRKIMLDCGIHPGLEGMDALPYIDLIDPAEIDLLIS
 HFHLDHCGALPWFLQKTSFKGRTFMTHATKAIYRWLLSDYVKVSNISADDMLYETDLEESMDKIETINF
 HEVKEVAGIKFWCYHAGHVLGAAMFMIEIAGVKLLYTGDFSRQEDRHLMAAEPNPKPDILIIESTYGTH
 IHEKREEREARFCNTVHDIVNRGGRGLIPVFALGRAQELLLILDEYWQNHPELHDIPIIYASSLAKKMA
 VYQTYVNAMNDKIRKQININPFVFKHISNLKSMDFDDIGPSVVMASPGMMQSGLSRELFEWCTDKRN
 GVIIAGYCVETLAKHIMSEPEEITMSGQKPLKMSVDYISFSAHTDYQQTSEFIRALKPPHVILVHGE
 QNEMARLKAALIREYEDNDEVHIEVHNPRNTEAVTLNFRGEKLAKVMGFLADKKPEQGQVRVSGILVKRNF
 NYHILSPCDLSNYTDLAMSTVKQTQAIPYTPGFNLLCYLQKLTGDVEELEIQEKPAKLVFNITVIQEP
 GMVVLEWLANPSNDMYADTVTTVILEVQSNPKIRKGAQVQVSKKLEMHVYSKRLEIMLQDIFGEDCVSVK
 DDSILSVTVDGKTANLNLETRTVECEESEDESREMLAAQRLYEALTPVH

TRTRPLEQKLISEEDLAANDILDYKDDDDKV

Chromatograms: https://cdn.origene.com/chromatograms/mk6202_g07.zip

Restriction Sites: SgfI-MluI

Cloning Scheme:

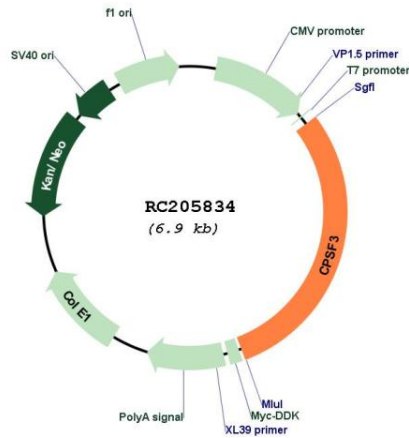


ACCN: NM_016207

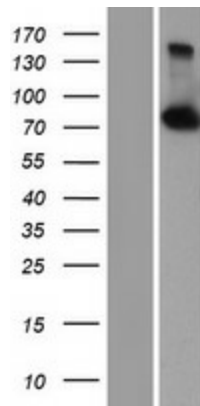
ORF Size: 2052 bp

OTI Disclaimer:	Due to the inherent nature of this plasmid, standard methods to replicate additional amounts of DNA in E. coli are highly likely to result in mutations and/or rearrangements. Therefore, OriGene does not guarantee the capability to replicate this plasmid DNA. Additional amounts of DNA can be purchased from OriGene with batch-specific, full-sequence verification at a reduced cost. Please contact our customer care team at custsupport@origene.com or by calling 301.340.3188 option 3 for pricing and delivery.
	The molecular sequence of this clone aligns with the gene accession number as a point of reference only. However, individual transcript sequences of the same gene can differ through naturally occurring variations (e.g. polymorphisms), each with its own valid existence. This clone is substantially in agreement with the reference, but a complete review of all prevailing variants is recommended prior to use. More info
OTI Annotation:	This clone was engineered to express the complete ORF with an expression tag. Expression varies depending on the nature of the gene.
Components:	The ORF clone is ion-exchange column purified and shipped in a 2D barcoded Matrix tube containing 10ug of transfection-ready, dried plasmid DNA (reconstitute with 100 ul of water).
Reconstitution Method:	<ol style="list-style-type: none"> 1. Centrifuge at 5,000xg for 5min. 2. Carefully open the tube and add 100ul of sterile water to dissolve the DNA. 3. Close the tube and incubate for 10 minutes at room temperature. 4. Briefly vortex the tube and then do a quick spin (less than 5000xg) to concentrate the liquid at the bottom. 5. Store the suspended plasmid at -20°C. The DNA is stable for at least one year from date of shipping when stored at -20°C.
Note:	Plasmids are not sterile. For experiments where strict sterility is required, filtration with 0.22um filter is required.
RefSeq:	NM_016207.4
RefSeq Size:	2401 bp
RefSeq ORF:	2055 bp
Locus ID:	51692
UniProt ID:	Q9UKF6
Cytogenetics:	2p25.1
Domains:	lactamase_B
MW:	77.5 kDa
Gene Summary:	This gene encodes a member of the metallo-beta-lactamase family. The encoded protein is a 73kDa subunit of the cleavage and polyadenylation specificity factor and functions as an endonuclease that recognizes the pre-mRNA 3'-cleavage site AAUAAA prior to polyadenylation. It also cleaves after the pre-mRNA sequence ACCCA during histone 3'-end pre-mRNA processing. [provided by RefSeq, Oct 2012]

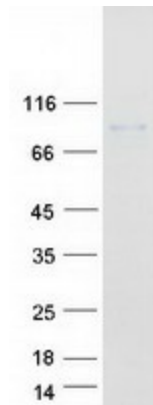
Product images:



Circular map for RC205834



Western blot validation of overexpression lysate (Cat# [LY414121]) using anti-DDK antibody (Cat# [TA50011-100]). Left: Cell lysates from untransfected HEK293T cells; Right: Cell lysates from HEK293T cells transfected with RC205834 using transfection reagent MegaTran 2.0 (Cat# [TT210002]).



Coomassie blue staining of purified CPSF3 protein (Cat# [TP305834]). The protein was produced from HEK293T cells transfected with CPSF3 cDNA clone (Cat# RC205834) using MegaTran 2.0 (Cat# [TT210002]).