

Product datasheet for **RC205831**

SLC35E3 (NM_018656) Human Tagged ORF Clone

Product data:

Product Type:	Expression Plasmids
Product Name:	SLC35E3 (NM_018656) Human Tagged ORF Clone
Tag:	Myc-DDK
Symbol:	SLC35E3
Synonyms:	BLOV1
Mammalian Cell Selection:	Neomycin
Vector:	pCMV6-Entry (PS100001)
E. coli Selection:	Kanamycin (25 ug/mL)
ORF Nucleotide Sequence:	>RC205831 ORF sequence Red=Cloning site Blue=ORF Green=Tags(s)

TTTTGTAATACGACTCACTATAGGGCGGCCGGAATTCGTCGACTGGATCCGGTACCGAGGAGATCTGCC
GCC**CGATCGCC**

ATGGCATTGCTGGTGGACCGAGTGC GGGGCCACTGGCGAATCGCCGCCGGGCTCCTGTTCAACCTGCTGG
TGTCCATCTGCATTGTGTTCTCAACAAATGGATTTATGTGTACCACGGCTTCCCCAACATGAGCCTGAC
CCTGGTGCACCTCGTGGTCACTGGCTGGGCTTGATATCTGCCAGAAGCTGGACATCTTGCCCCAAA
AGTCTGCCGCCCTCCAGGCTCCTCCTCGGCCCTCAGCTTCTGTGGCTTTGTGGTCTTCACTAACCTTT
CTCTGCAGAACACCATAGGCACCTATCAGCTGGCCAAGGCCATGACCACGCCGTGATCATAGCCAT
CCAGACCTTCTGCTACCAGAAAACCTTCTCCACCAGAATCCAGCTCACGCTGATTCTATAACTTTAGGT
GTAATCCTAAATCTTATTACGATGTGAAGTTAATTTCTTGAATGGTGTGTTGCTGCTCTTGGTGTTT
TAGTTACATCCCTTATCAAGTGTGGTAGGAGCCAAACAGCATGAATTACAAGTGAACCTCAATGCAGCT
GCTGTACTACCAGGCTCCGATGTCATCTGCCATGTTGCTGGTGTGCTGTGCCCTTCTTTGAGCCAGTGTTT
GGAGAAGGAGGAATTTGGTCCCTGGTCAGTTTCTGCTTTGCTTATGGTGTGCTATCTGGAGTAATAG
CTTTCATGGTGAACCTTATCAATTTATTGGATCATTGGGAACACTTCACCTGTCACCTATAACATGTTCCG
ACACTTCAAGTTCTGCATTACTTTATTCGGAGGATATGTTTTATTTAAGGATCCACTGTCCATTAATCAG
GCCCTTGGCATTATGTACATTATTTGGCATTCTCGCCTATACCCACTTAAAGTCAGTGAACAGGAAG
GAAGTAGGAGTAACTGGCACAACGTCCT

ACGCGTACGCGGCCGCTCGAGCAGAAACTCATCTCAGAAGAGGATCTGGCAGCAAATGATATCCTGGATT
ACAAGGATGACGACGATAAGGTTTAA



[View online »](#)

Protein Sequence: >RC205831 protein sequence
 Red=Cloning site Green=Tags(s)

MALLVDRVRGHWRIAAGLLFNLLVSICIVFLNKWIYVYHGFPNMSLTLVHFVVTWLGLYICQKLDIFAPK
 SLPPSRLLLLALSFCGFVVFTNLSLQNNITIGTYQLAKAMTPVIAIQTFICYQKTFSTRIQLTLIPITLG
 VILNSYDVKFNFLGMVFAALGVLVTSLYQVWVGAKQHELQVNSMQLLYQAPMSSAMLLVAVPFFPEPVF
 GEGGIFGPWSVSALLMVLLSGVIAFMVNLSIYWIIIGNTSPVTYNYMFGHFKFCITLFGGYVLFKDPLSINQ
 ALGILCTLFGILAYTHFKLSEQEGSRSKLAQRP

TRTRPLEQKLISEEDLAANDILDYKDDDDKV

Chromatograms: https://cdn.origene.com/chromatograms/mk6554_e08.zip

Restriction Sites: SgfI-MluI

Cloning Scheme:



ACCN: NM_018656

ORF Size: 939 bp

OTI Disclaimer: The molecular sequence of this clone aligns with the gene accession number as a point of reference only. However, individual transcript sequences of the same gene can differ through naturally occurring variations (e.g. polymorphisms), each with its own valid existence. This clone is substantially in agreement with the reference, but a complete review of all prevailing variants is recommended prior to use. [More info](#)

OTI Annotation: This clone was engineered to express the complete ORF with an expression tag. Expression varies depending on the nature of the gene.

Components: The ORF clone is ion-exchange column purified and shipped in a 2D barcoded Matrix tube containing 10ug of transfection-ready, dried plasmid DNA (reconstitute with 100 ul of water).

Reconstitution Method:

1. Centrifuge at 5,000xg for 5min.
2. Carefully open the tube and add 100ul of sterile water to dissolve the DNA.
3. Close the tube and incubate for 10 minutes at room temperature.
4. Briefly vortex the tube and then do a quick spin (less than 5000xg) to concentrate the liquid at the bottom.
5. Store the suspended plasmid at -20°C. The DNA is stable for at least one year from date of shipping when stored at -20°C.

RefSeq: [NM_018656.5](#)

RefSeq Size: 2347 bp

RefSeq ORF: 942 bp

Locus ID: 55508

UniProt ID: [Q7Z769](#)

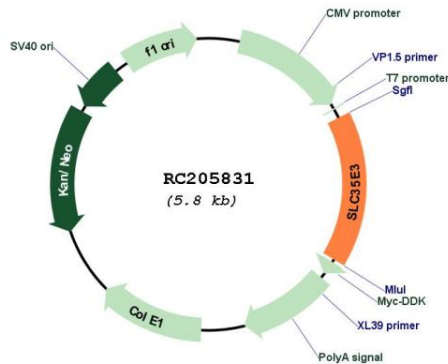
Cytogenetics: 12q15

Protein Families: Transmembrane

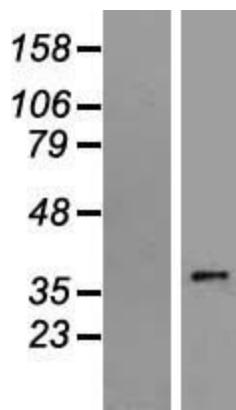
MW: 35.1 kDa

Gene Summary: Putative transporter.[UniProtKB/Swiss-Prot Function]

Product images:



Circular map for RC205831



Western blot validation of overexpression lysate (Cat# [LY412963]) using anti-DDK antibody (Cat# [TA50011-100]). Left: Cell lysates from untransfected HEK293T cells; Right: Cell lysates from HEK293T cells transfected with RC205831 using transfection reagent MegaTran 2.0 (Cat# [TT210002]).