

Product datasheet for **RC205827**

ZC3H15 (NM_018471) Human Tagged ORF Clone

Product data:

Product Type:	Expression Plasmids
Product Name:	ZC3H15 (NM_018471) Human Tagged ORF Clone
Tag:	Myc-DDK
Symbol:	ZC3H15
Synonyms:	HT010; LEREPO4; MSTP012
Mammalian Cell Selection:	Neomycin
Vector:	pCMV6-Entry (PS100001)
E. coli Selection:	Kanamycin (25 ug/mL)



[View online »](#)

ORF Nucleotide Sequence:

>RC205827 ORF sequence
 Red=Cloning site Blue=ORF Green=Tags(s)

TTTTGTAATACGACTCACTATAGGGCGGCCGGGAATTCGTCGACTGGATCCGGTACCGAGGAGATCTGCC
 GCC**CGGATCGCC**

ATGCCCCCAAGAAACAGGCTCAGGCCGGGGCAGCAAAAAGCGGAGCAAAAAAGAAGGAGAAGATTA
 TCGAAGACAAAACTTTCGGTTTGAAGAATAAGAAAGGAGCAAAGCAACAGAAGTTTATCAAGGCTGCAC
 ACATCAAGTTAAATTTGGTCAACAAAATCCACGTCAGGTAGCACAGAGTGAAGCTGAAAAGAAATTGAAG
 AAGGATGACAAGAAGAAAGAATTGCAGGAGCTAAATGAGCTGTTCAAACCTGTAGTTGCTGCTCAAAAA
 TAAGTAAAGGTGCAGATCCCAAGTCTGTAGTATGTGCATTCTTCAAGCAAGGACAGTGTACTAAAGGAGA
 TAAGTGAAGTTCTCCATGACTTGACTCTGGAGAGAAAATGTGAAAAGCGAAGTGTTCATTGATGCA
 AGAGATGAAGAACTTGAAAAGATACTATGGATAATTGGGATGAGAAAAGCTGGAAGAAGTGTGAACA
 AGAAGCACGGTGAGCGGAAAAGAAAAACCAAAACTCAAATAGTGTGCAAGCATTTCCTGGAAGCTAT
 TGAACAACAAGTATGGCTGGTTTTGGGTATGCCCTGGAGGGGTGATATTTGCATGTATCGTCATGCA
 CTTCTCTGGATTTGTGTTGAAAAAGATAAAAAGAAAGAGAAAAGATGAAATTCATTAGAAG
 ATCTAATTGAGAGAGAGCGTTCTGCCCTAGGTCCAATGTTACCAAAATCACTCTAGAATCTTTCTTGC
 CTGGAAGAAAAGGAAAAGACAAGAAAAGATTGATAAACTTGAACAAGATATGGAAGAAGGAAAGCTGAC
 TTCAAAGCAGGAAAAGCACTAGTGATCAGTGGTGGTGAAGTGTGAAATTCGTCCTGAAGTGGTCAATG
 ATGATGATGAGGAAGCAGATGATACCCGCTACCCAGGGAACAGGTGGTGGTGGTGGTGGTGGTGGTGGT
 GAGTGTAAATGACATAGATTTAAGCCTGTACATCCAAGAGATGTAGATGAAACAGGTATTACTGTAGCC
 AGTCTTGAAGATTGAGCAGATATACTTCAGATAAAGATGAAAACAAATTAAGTGAAGCTTCTGGAGGTA
 GGGCTGAAAATGGTGAAGAAGTGACTTGAAGAGGACAACGAGAGGGAGGGAACGAAAATGGAGCCAT
 TGATGCTGTTCTGTTGATGAAAATCTTTCACTGGAGAGGATTTGGATGAACTAGAAGAAGAATTAAT
 ACACTTGATTTAGAAGAA

ACGCGTACGCGGCCGCTCGAGCAGAACTCATCTCAGAAGAGGATCTGGCAGCAATGATATCCTGGATT
 ACAAGGATGACGACGATAAGGTTTAA

Protein Sequence:

>RC205827 protein sequence
 Red=Cloning site Green=Tags(s)

MPPKKQAQAGGSKAEQKKKEKIIEDKTFGLKNKKGAKQKFIKAVTHQVKFGQQNPRQVAQSEAEKLLK
 KDDKKKELQELNELFKPVVAAQKISKGADPKSVCAFFKQGQCTKGDKCKFSDHLTLERKCEKRSVYIDA
 RDEELEKDTMDNWDEKKLEEVNKKHGEAEKKKPKTQIVCKHFLEAIENNKYGFVWVCPGGGDI MYRHA
 LPPGFVLKDKKKEEKEDEISLEDLIERERSALGPNVTKITLESFLAWKKRKRQEKIDKLEQDMERRKAD
 FKAGKALVISGREVFEFRPELVNDDDEEADTRYTQGTGGDEVDDSVSVNDIDL SLYIPRDVDETGITVA
 SLERFSTYTSKDENKLEASGGRAENGERSDLEEDNEREGTENGAIDAVPVDENLFTGEDLDELEELN
 TLDLEE

TRTRPLEQKLISEEDLAANDILDYKDDDDKV

Chromatograms:

https://cdn.origene.com/chromatograms/mk6564_b05.zip

Restriction Sites:

Sgfl-Mlul

Cloning Scheme:


ACCN: NM_018471

ORF Size: 1278 bp

OTI Disclaimer: The molecular sequence of this clone aligns with the gene accession number as a point of reference only. However, individual transcript sequences of the same gene can differ through naturally occurring variations (e.g. polymorphisms), each with its own valid existence. This clone is substantially in agreement with the reference, but a complete review of all prevailing variants is recommended prior to use. [More info](#)

OTI Annotation: This clone was engineered to express the complete ORF with an expression tag. Expression varies depending on the nature of the gene.

Components: The ORF clone is ion-exchange column purified and shipped in a 2D barcoded Matrix tube containing 10ug of transfection-ready, dried plasmid DNA (reconstitute with 100 ul of water).

Reconstitution Method:

1. Centrifuge at 5,000xg for 5min.
2. Carefully open the tube and add 100ul of sterile water to dissolve the DNA.
3. Close the tube and incubate for 10 minutes at room temperature.
4. Briefly vortex the tube and then do a quick spin (less than 5000xg) to concentrate the liquid at the bottom.
5. Store the suspended plasmid at -20°C. The DNA is stable for at least one year from date of shipping when stored at -20°C.

RefSeq: [NM_018471.3](#)

RefSeq Size: 2149 bp

RefSeq ORF: 1281 bp

Locus ID: 55854

UniProt ID: [Q8WU90](#)

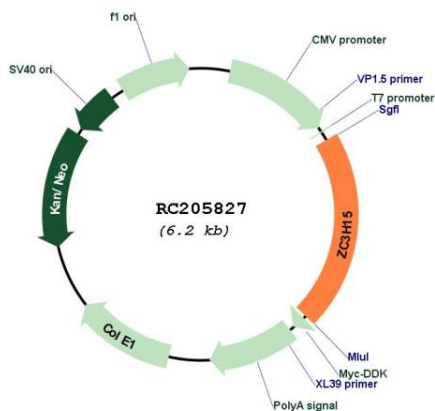
Cytogenetics: 2q32.1

Domains: zf-CCCH

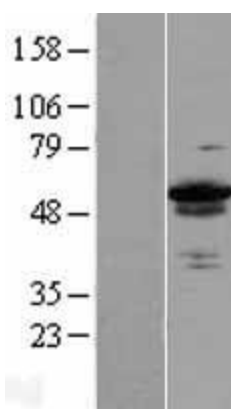
MW: 48.6 kDa

Gene Summary: Protects DRG1 from proteolytic degradation (PubMed:19819225). Stimulates DRG1 GTPase activity likely by increasing the affinity for the potassium ions (PubMed:23711155). [UniProtKB/Swiss-Prot Function]

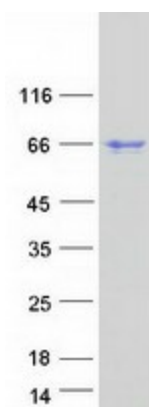
Product images:



Circular map for RC205827



Western blot validation of overexpression lysate (Cat# [LY413047]) using anti-DDK antibody (Cat# [TA50011-100]). Left: Cell lysates from untransfected HEK293T cells; Right: Cell lysates from HEK293T cells transfected with RC205827 using transfection reagent MegaTran 2.0 (Cat# [TT210002]).



Coomassie blue staining of purified ZC3H15 protein (Cat# [TP305827]). The protein was produced from HEK293T cells transfected with ZC3H15 cDNA clone (Cat# RC205827) using MegaTran 2.0 (Cat# [TT210002]).