

Product datasheet for **RC205824**

DHLAG (CD74) (NM_004355) Human Tagged ORF Clone

Product data:

Product Type: Expression Plasmids
Product Name: DHLAG (CD74) (NM_004355) Human Tagged ORF Clone
Tag: Myc-DDK
Symbol: DHLAG
Synonyms: DHLAG; HLADG; Ia-GAMMA; II; p33
Mammalian Cell Selection: Neomycin
Vector: pCMV6-Entry (PS100001)
E. coli Selection: Kanamycin (25 ug/mL)
ORF Nucleotide Sequence: >RC205824 representing NM_004355
 Red=Cloning site Blue=ORF Green=Tags(s)

TTTTGTAATACGACTCACTATAGGGCGGCCGGAATTCGTCGACTGGATCCGGTACCGAGGAGATCTGCC
 GCC**CGATCGCC**

ATGCACAGGAGGAGAAGCAGGAGCTGTCGGGAAGATCAGAAGCCAGTCATGGATGACCAGCGGACCTTA
 TCTCCAACAATGAGCAACTGCCCATGCTGGGCCGGCCCTGGGGCCCCGGAGAGCAAGTGCAGCCGCGG
 AGCCCTGTACACAGGCTTTTCCATCCTGGTGACTCTGCTCCTCGCTGGCCAGGCCACCACCGCTACTTC
 CTGTACCAGCAGCAGGGCCGGCTGGACAACTGACAGTCACCTCCAGAACCTGCAGCTGGAGAACCTGC
 GCATGAAGCTTCCAAGCCTCCAAGCCTGTGAGCAAGATGCGCATGGCCACCCCGCTGCTGATGCAGGC
 GCTGCCCATGGGAGCCCTGCCCCAGGGGCCATGCAGAAATGCCACCAAGTATGGCAACATGACAGAGGAC
 CATGTGATGCACCTGCTCCAGAATGCTGACCCCTGAAGGTGTACCCGCCACTGAAGGGGAGCTTCCCGG
 AGAACCTGAGACACCTTAAGAACACCATGGAGACCATAGACTGGAAGGTCTTTGAGAGCTGGATGCACCA
 TTGGCTCCTGTTTGAATGAGCAGGCACTCCTTGAGCAAAAGCCCACTGACGCTCCACCGAAAGAGTCA
 CTGGAAGTGGAGGACCCGTCTTCTGGGCTGGGTGTGACCAAGCAGGATCTGGGCCAGTCCCATG

ACGCGTACGCGGGCCGCTCGAGCAGAACTCATCTCAGAAGAGGATCTGGCAGCAAATGATATCCTGGATT
 ACAAGGATGACGACGATAAGGTTTAA



[View online »](#)

Protein Sequence: >RC205824 representing NM_004355
Red=Cloning site Green=Tags(s)

MHRRRSRSCREDQKPVMDQDRDLISNNEQLPMLGRRPGAPESKCSRGALYTGFSILVTL LLAGQATTAYF
 LYQQGRLDKLTVTSQNLQLENLRMCLKPKPKPVSKMRMATPLLQALPMGALPQGPMQNAKYGNMTE
 HVMHLLQNADPLKVYPLKGSFPENLRHLKNTMETIDWKVFESWMMHLLFEMSRHSLEQKPTDAPPKES
 LELEDPSGLGVTKQDLGPVPM

TRTRPLEQKLISEEDLAANDILDYKDDDDKV

Chromatograms: https://cdn.origene.com/chromatograms/mk8074_f11.zip

Restriction Sites: SgfI-MluI

Cloning Scheme:



ACCN: NM_004355

ORF Size: 696 bp

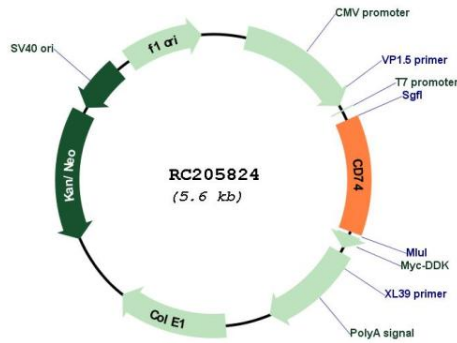
OTI Disclaimer: Due to the inherent nature of this plasmid, standard methods to replicate additional amounts of DNA in *E. coli* are highly likely to result in mutations and/or rearrangements. Therefore, OriGene does not guarantee the capability to replicate this plasmid DNA. Additional amounts of DNA can be purchased from OriGene with batch-specific, full-sequence verification at a reduced cost. Please contact our customer care team at custsupport@origene.com or by calling 301.340.3188 option 3 for pricing and delivery.

The molecular sequence of this clone aligns with the gene accession number as a point of reference only. However, individual transcript sequences of the same gene can differ through naturally occurring variations (e.g. polymorphisms), each with its own valid existence. This clone is substantially in agreement with the reference, but a complete review of all prevailing variants is recommended prior to use. [More info](#)

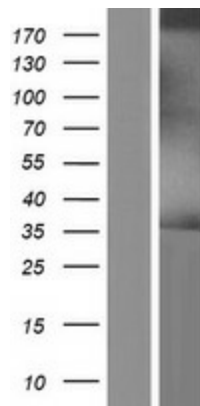
OTI Annotation: This clone was engineered to express the complete ORF with an expression tag. Expression varies depending on the nature of the gene.

Components:	The ORF clone is ion-exchange column purified and shipped in a 2D barcoded Matrix tube containing 10ug of transfection-ready, dried plasmid DNA (reconstitute with 100 ul of water).
Reconstitution Method:	<ol style="list-style-type: none">1. Centrifuge at 5,000xg for 5min.2. Carefully open the tube and add 100ul of sterile water to dissolve the DNA.3. Close the tube and incubate for 10 minutes at room temperature.4. Briefly vortex the tube and then do a quick spin (less than 5000xg) to concentrate the liquid at the bottom.5. Store the suspended plasmid at -20°C. The DNA is stable for at least one year from date of shipping when stored at -20°C.
Note:	Plasmids are not sterile. For experiments where strict sterility is required, filtration with 0.22um filter is required.
RefSeq:	NM_004355.3
RefSeq Size:	1327 bp
RefSeq ORF:	699 bp
Locus ID:	972
UniProt ID:	P04233
Cytogenetics:	5q33.1
Protein Families:	Druggable Genome, Transmembrane
Protein Pathways:	Antigen processing and presentation
MW:	26.2 kDa
Gene Summary:	The protein encoded by this gene associates with class II major histocompatibility complex (MHC) and is an important chaperone that regulates antigen presentation for immune response. It also serves as cell surface receptor for the cytokine macrophage migration inhibitory factor (MIF) which, when bound to the encoded protein, initiates survival pathways and cell proliferation. This protein also interacts with amyloid precursor protein (APP) and suppresses the production of amyloid beta (Abeta). Multiple alternatively spliced transcript variants encoding different isoforms have been identified. [provided by RefSeq, Aug 2011]

Product images:



Circular map for RC205824



Western blot validation of overexpression lysate (Cat# [LY418040]) using anti-DDK antibody (Cat# [TA50011-100]). Left: Cell lysates from untransfected HEK293T cells; Right: Cell lysates from HEK293T cells transfected with RC205824 using transfection reagent MegaTran 2.0 (Cat# [TT210002]).